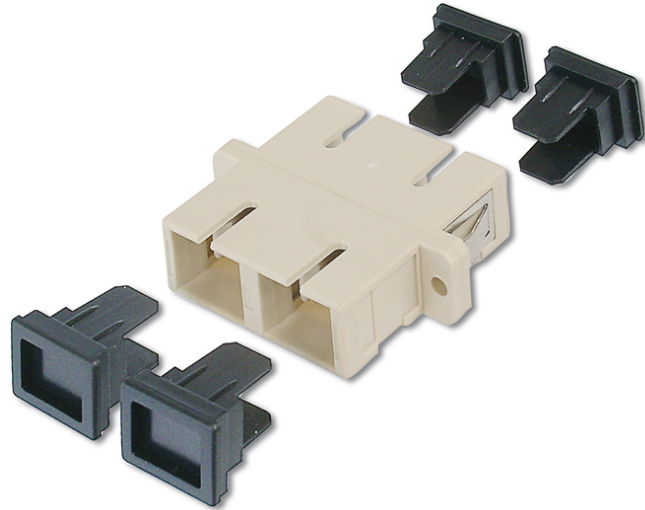


# DIGITUS® SC / SC Coupler, Multimode

DN-96004-1

EAN 4016032335665



**FO coupler, duplex, SC to SC, MM OM2, color grey ceramic sleeve, polymer housing, incl. screws**

The high quality DIGITUS® fiber optic couplers with ceramic ferrule are the perfect supplement for the assembling of splice boxes. Due to constant quality controls and the accurate processing, the couplers guarantee an optimal performance and link quality. Each coupler is equipped with a dust protection cup, to protect the ferrules against dust. Moreover the couplers are delivered with the suitable mounting material, so that they can be installed and fixed to the front panels immediately. The perfect performance is achieved by using the DIGITUS® Pigtails, which are

also high quality manufactured and whose connectors interact with the couplers in the best of possible ways.

**The best solution for Splice Boxes**

- SC / SC
- Duplex
- Multimode
- Ceramic Sleeve
- Polymer housing
- Grey color
- incl. fixing material

Logistics						
	Number (pcs)	Weight (kg)	Depth (cm)	Width (cm)	Height (cm)	cm³
Packaging Unit Carton	1500	13.00	41.00	25.50	36.00	37,638.00
Packaging Unit Inside	20	0.17	23.00	17.00	1.20	469.20
Packaging Unit Single	1	0.01	3.50	3.50	1.00	12.25
Net single without Packaging	1	-0.02	3.50	3.50	1.00	12.25

**Safety notes**

- Avoid direct contact with light sources: Fiber optic cables, especially those with active light sources such as lasers (e.g. in optical communication systems), can emit dangerous radiation that can damage eyes. Take care never to look directly into the light of an optical fiber, even if the light source is invisible to the naked eye.
- When working with fiber optic cables, especially during tests or when working with lasers, protective goggles should always be worn to protect against harmful radiation.
- When plugging and unplugging the cable, only grasp the plug and do not pull directly on the cable.
- Do not kink or crush: Fiber optic cables are sensitive to mechanical stress.
- To protect cables from physical damage, they should be laid in special ducts or with protective materials
- Keep cable connectors clean: Fiber optic cables are sensitive to dust and dirt. Even small particles on the connectors can severely impair the signal quality.
- Cables should not be used in environments with extremely high or very low temperatures. Observe the product information on the maximum operating temperature of the cable
- Check cables regularly for visible damage such as cracks, kinks or signs of wear. Defective cables should be replaced immediately.

**EU responsible person**

EU based economic operator ensuring the product complies with the required regulations.

ASSMANN Electronic GmbH  
Auf dem Schüffel 3  
Lüdenscheid, Germany  
<https://www.assmann.com>  
[info@assmann.com](mailto:info@assmann.com)