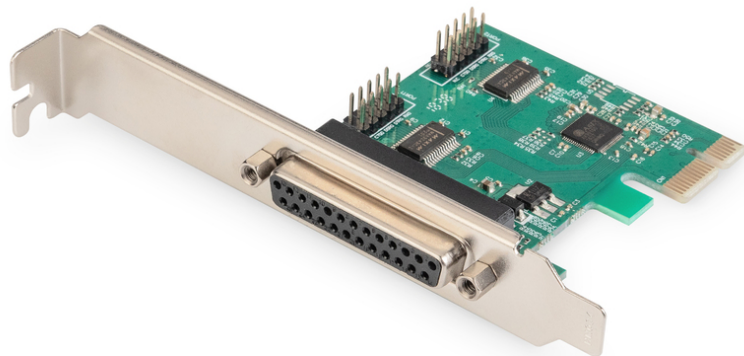


# PCI Express Parallel Card, 2/1-port

DS-30040-2  
EAN 4016032317760



**Serial/Parallel I/O, 2/1-Port,PCIexpress 2-port serial, 1-port parallel**

The DIGITUS PCI parallel 1-port card can be installed on a PCI express slot, so you can connect an SPP / ECP parallel peripheral device to the computer. The good performance of the SPP / ECP parallel card has a DB25 parallel port, which is ideal for connecting printers, scanners, CD drives, memory card readers and more. With plug & play, the card simply plugs into your PC and promises to make a quick use.

**Perfect for connecting any parallel or serial device including printers, scanners and ISDN terminal adapters**

- Chipset: AX99100
- 2x DSUB 9, serial ports, male, UART16C450/550
- 1x DSUB 25, parallel port

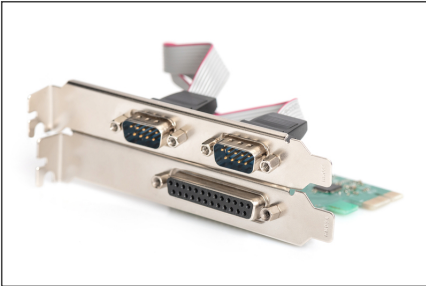
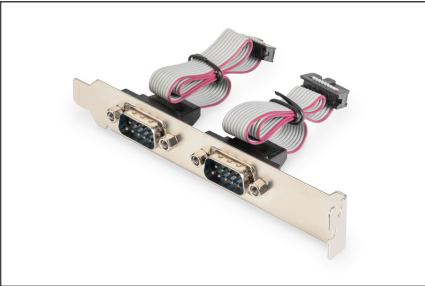
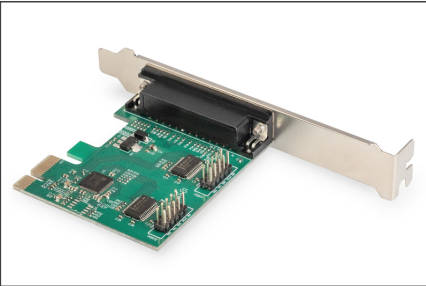
- Data transfer rate up to 115.200 bps
- Supports standard parallel port (SPP) & enhanced capability port (ECP)
- Compliant with PCI Express Base Specification 1.0a
- Operating temperature: 0 °C - 70 °C
- Operating humidity: 0% - 85% RH (non-condensing)
- Supports Windows 10, 8.1, 8, 7, Vista, XP and Linux

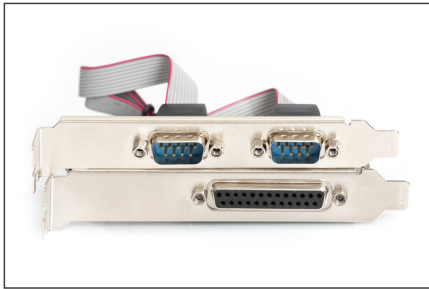
**Package contents**

- PCI Express Parallel Card, 2/1-port
- Low profile bracket
- Driver CD
- Manual

Logistics						
	Number (pcs)	Weight (kg)	Depth (cm)	Width (cm)	Height (cm)	cm³
Packaging Unit Carton	40	8.00	38.00	28.00	30.00	31,920.00
Packaging Unit Inside	1	0.20	14.00	18.50	18.00	4,662.00
Packaging Unit Single	1	0.20	14.00	3.00	13.00	546.00
Net single without Packaging	1	0.15	14.00	3.00	13.00	546.00

**More images:**





#### **Safety notes**

- Switch off the computer completely and disconnect it from the power supply before installing or removing the network card.
- Static discharge can damage the product or the PC. Take measures against static discharge (ESD) when installing the product, e.g. wear an antistatic wrist strap.
- Before installation, touch the metal surface of the PC housing or another grounded object to ground any ESD charge via the housing.
- Avoid using too much force when connecting the product to the PC.
- Please ensure that any cables are connected correctly without overstretching or damaging them.
- Avoid touching the contacts of the product with your fingers to prevent corrosion or static charge.