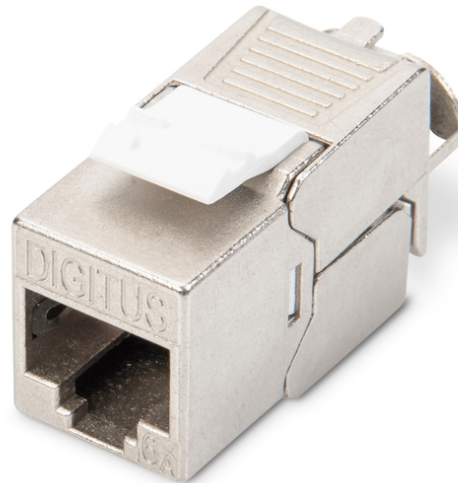


DIGITUS® CAT 6A Keystone module, shielded, tool-free mounting connection

DN-93615

EAN 4016032293767



CAT 6A Keystone Jack, shielded, tool free connection

The shielded CAT 6A Keystone module set DN-93615 from DIGITUS® impresses with future-oriented standards and high-end quality for your network. The compact design allows a series installation in 483 mm (19") 1U panels. The tool-free installation is carried out via LSA strips, color-coded according to EIA/TIA 568 A&B. Thanks to its compact design, the module also fits into design-compatible modular junction boxes.

Quick and easy installation without special tools

- Category 6A 10GBase-T, 500 MHz
- ISO/IEC 11801 3rd Edition, EN 50173-1
- Suitable for IEEE 802.3 af/at/bt - PoE, PoE+ (4PPoE in permanent link)
- Suitable for distribution panel and junction box installation
- RJ45 socket, 8P8C
- Cable installation via insulation displacement connectors, color-coded according to EIA/TIA 568 A & B
- Strain relief and cable fixing using cable ties
- Tool-free mounting connection
- 360° shield contacting
- Housing material: Zinc die-cast - nickel-plated
- Contact material: Phosphor bronze
- Coating Contacts: Nickel, gold-plated 0.5 μm

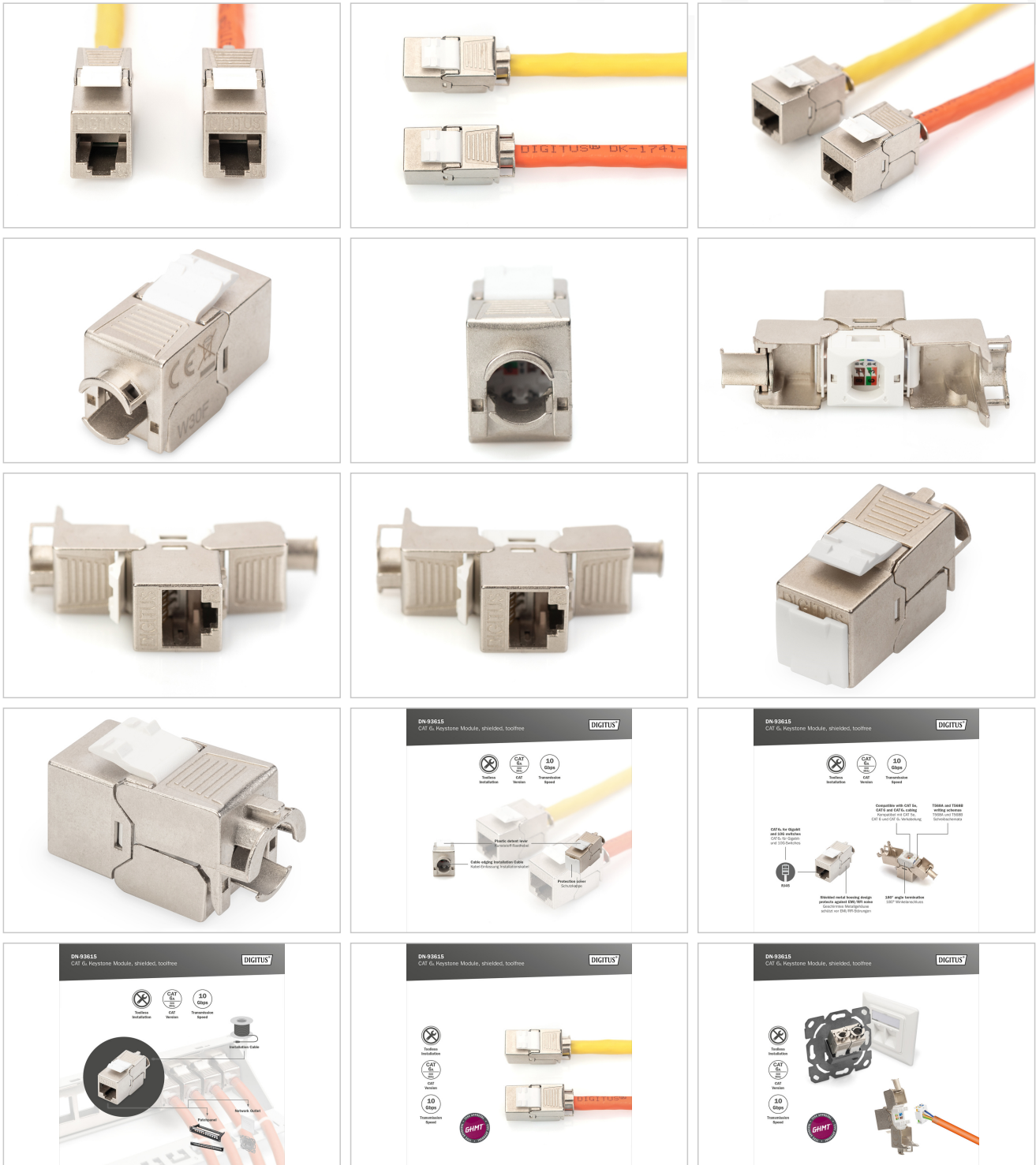
- Insertion force: Max. 30N (according to IEC 60603-7-51)
- Holding force: 7.7 kg between socket and plug
- Operating temperature: -20 °C up to +70 °C (ISO/IEC 11801, ANSI/TIA 568 C.2)
- Mating cycles: 750 (ISO/IEC 11801, IEC 60603-7-51)
- In accordance with IEC 60512-5, IEC 60512-6-5
- Copper conductor diameter: AWG (26/7 - 22/1), stranded and solid wire
- Tested with AWG 22/1 solid installation cable (DIGITUS® DK-174X-A-VH-X; AWG 22/1 Cat.7A installation cable)
- Dielectric strength: 1000 VDC (contact/contact), 1500 VDC (contact/ground)
- Tool-free installation using LSA insulation displacement connectors, color-coded in accordance with EIA/TIA 568 A & B
- Intelligent cable manager (reclosable)
- Dimensions (HxWxD): 21.0 x 14.5 x 34.5 mm
- Weight: 22 g

Attributes

- Weight: 22 g
- Category: CAT 6A

Logistics						
	Number (pcs)	Weight (kg)	Depth (cm)	Width (cm)	Height (cm)	cm³
Packaging Unit Carton	250	6.15	38.00	27.00	22.00	22,572.00
Packaging Unit Inside	25	0.62	12.00	18.00	7.00	1,512.00
Packaging Unit Single	1	0.02	3.10	1.50	2.10	9.77
Net single without Packaging	1	0.02	3.10	1.50	2.10	9.77

More images:





Safety notes

- Protect product from moisture
- Avoid antistatic charging when installing the product
- Observe the specifications of the raw cable manufacturer during installation

EU responsible person

EU based economic operator ensuring the product complies with the required regulations.

ASSMANN Electronic GmbH
 Auf dem Schüffel 3
 Lüdenscheid, Germany
<https://www.assmann.com>
info@assmann.com