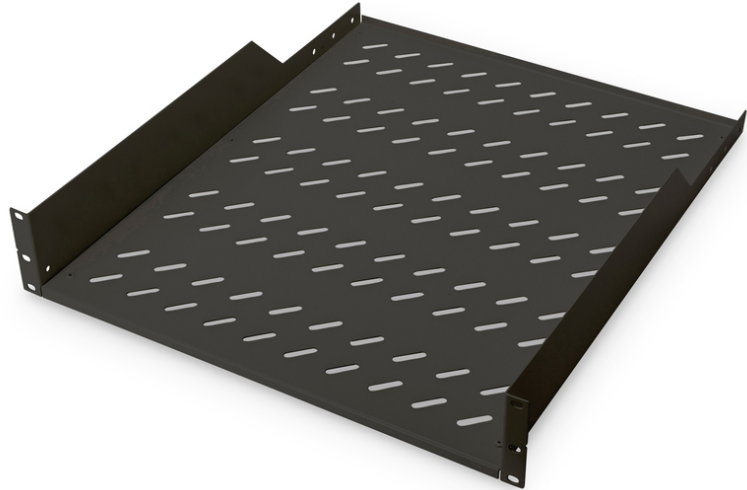


DIGITUS® Shelf for Fixed Installation in 483 mm (19") Cabinets

DN-19 TRAY-2-55-SW
EAN 4016032256830



2U fixed shelf for racks from 800 mm depth 88,5x482x552 mm, up to 25 kg, black (RAL 9005)

The shelves for fixed mounting can be installed easy on the two front 483 mm (19") profile rails of your 483 mm (19") network- or server cabinet. Due to their stable, perforated steel sheet with a high load capacity, they are the optimal surface for components which are not 483 mm (19") suitable.

- Fixed installation
- sturdy, perforated steel sheet
- incl. fixing material
- 2-point fixing (front 19" profile rails)

Attributes

- Color: black, RAL 9005
- Load capacity: 25 kg
- Mounting type: Fixed mounting
- Units: 2
- Inch form factor (IEC 60297): 482.6 mm (19")
- Suitable cabinet depth: ≧ 800 mm

Package contents

- Installation set (screws, cage nuts, washers)

Logistics						
	Number (pcs)	Weight (kg)	Depth (cm)	Width (cm)	Height (cm)	cm³
Packaging Unit Carton	5	18.70	51.00	52.00	60.00	159,120.00
Packaging Unit Inside	1	3.74	58.20	50.10	8.60	25,076.10
Packaging Unit Single	1	3.74	58.20	50.10	9.60	27,991.90
Net single without Packaging	1	2.80	58.20	50.10	9.60	27,991.90

Safety notes

- When installing and using the accessory product for network cabinets, observe the respective safety instructions of the manufacturer or the cabinet system in which you want to use the accessory.

EU responsible person

EU based economic operator ensuring the product complies with the required regulations.

ASSMANN Electronic GmbH
Auf dem Schüffel 3
Lüdenscheid, Germany
<https://www.assmann.com>
info@assmann.com