

FLUKE DSX2-8000 CableAnalyzer (2GHz, WiFi)

FL-DSX2-8000 INT
EAN 0754082143680



The DSX CableAnalyzer series is a copper cable certification solution derived from the Versiv family of products for cabling certification. The DSX series consists of the DSX2-8000, which certifies cabling up to Category 8 / 2GHz, and the DSX2-5000, which certifies up to Category 6A / Class FA / 1GHz. The Versiv line also includes modules for the certification of fibre optic cabling using OLTS, OTDR and fibre optic connector inspection techniques. Versiv reduces the cost of testing by up to two-thirds, which can ultimately translate into an additional 10% profit per project. The shortest testing time (8 seconds for Cat.6A) plays as important a role in the process as the system, which is designed from the ground up to reduce errors and streamline the certification process. Full integration with LinkWare Live cloud-based software gives the project manager the ability to remotely configure the tester, monitor workflow and even locate the device. The DSX analyser certifies copper cabling, ensures compliance with all standards including Level VI/2G, facilitates task management and leads to faster system acceptance. It is not just a product for specialist technicians and project managers. People of all skill levels can improve configuration, operation, test reporting while managing different projects.

Features of the DSX2-8000 tester:

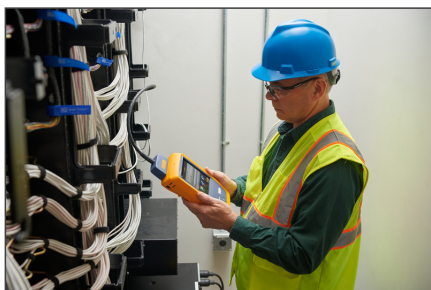
- Test standards:
- TIA: Category 3, 4, 5, 5e, 6, 6A, 8 according to ANSI / TIA-568.2-D
- ISO/IEC: Class C and D, E, EA, F, FA and I/II certificates in accordance with ISO/IEC
- Maximum frequency: 2000 MHz
- General specifications:
- Test speed: Full two-way self-test Category 5e or 6 / Class D or E : 7 seconds . Full two-way Category 6A / Class E A self-test : 8 seconds . Category 8 full bi-directional self-test: 16 seconds
- Supported test parameters (The test standard selected determines the test parameters and test frequency range): connection apa, length, propagation delay, delay skew, DC loop resistance, pair-to-pair resistance asymmetry, pair resistance asymmetry, insertion loss (attenuation), reflection loss (RL), common mode reflection loss (CMRL)
- Near End Crosstalk (NEXT), Far End Crosstalk (FEXT), Attenuation to Crosstalk Ratio (ACR-N), ACR-F (ELFEXT), Sum Power ACR-F (ELFEXT), Sum Power NEXT, Sum Power ACR-N, Sum Power Alien NEXT (PS ANEXT)
- Power Sum Alien Attenuation NEXT Stosunek Far End (PS AACR-F), Common Mode to Differential Mode NEXT (CDNEXT), Transverse Conversion Loss (TCL), Equal Level Transverse Conversion Loss (ELTCTL)

- Input protection: Protected against continuous telco voltages and 100 mA surges. Occasional surges on the ISDN network will not cause damage
- Screen: 5.7-inch LCD display with capacitive touchscreen
- Housing: Impact-resistant plastic with shock-absorbing coating
- Dimensions: Versiv main unit with DSX module and battery installed: 6.67 cm x 13.33 cm x 27.94 cm (2.625 in x 5.25 in x 11.0 in)
- Weight: Versiv main unit with DSX module and battery installed: 3 pounds, 5 ounces (1.28 kg)
- Main and remote unit: Lithium-ion battery, 7.2 V
- Typical battery life: 8 hours
- Charging time: Tester off: 4 hours charging from 10% to 90% capacity
- Languages supported: English, French, German, Italian, Japanese, Portuguese, Spanish, Chinese, Korean, Russian, Traditional Chinese, Czech, Polish, Swedish, Hungarian
- Calibration: calibration period is 1 year
- Integrated Wi-Fi Compliant with IEEE 802.11 a / b / g / n; dual-band (2.4 GHz and 5 GHz)
- Environmental conditions:
- Operating temperature: 0°C to 45°C
- Storage temperature: -10°C to +60°C
- Relative humidity during operation: 0% to 90%, 0°C to 35°C; 0% to 70%, 35°C to 45°C

Package contents

- DSX2-8000 INT equipment:
- Versiv2 main unit
- Versiv2 remote unit
- 2x DSX-8000 CableAnalyser module
- 2x Category 8/Class I Permanent Link adapter
- 2x Category 8/Class I Channel adapter
- 2x Headset
- 2x Wrist strap
- 2x Shoulder strap
- Protective bag for tester
- USB interface cable
- 2x AC charger
- 2x Universal connector
- 2x AxTalk terminators
- Calibration and getting started guide

More images:



EU responsible person

EU based economic operator ensuring the product complies with the required regulations.

Fluke Europe B.V.

Brainport Industries Campus-Cluster 1

Eindhoven, The Netherlands

<https://www.flukenetworks.com/>

Sales.core@flukenetworks.com