

# Fttx installation kit, pre-assembled, 4-fiber, LC/APC connector, length 50 m

DN-948050-2  
EAN 4016032508816



## Fttx - Installation Kit, SM G657A2, 50 m LSZH CPR B2ca, One end 4F LC/APC, one end Empty

The growing demand to extend the fiber optic network into the home requires products that enable simple and efficient installation of this network. The Digitus FTTH installation kit is a solution that makes it easy to extend and complete the fiber optic network in the home. The simplicity of the installation results from the fact that the product is supplied with all the necessary components, thus eliminating the need to search for the components for the installation individually. The junction box can be mounted in the designated location and connection to the router is made easier as the LC/APC connectors are already included. The integrated fiber drop cable can then be pulled to make the connection to the house handover point, which is mounted in the building as the entry point for the fiber network. It provides additional connections and splicing options to meet the requirements for scaling the number of fiber connections.

**The compact FTTH kit with pre-assembled fiber optic installation cable on one side is ideal for installing high-speed fiber optic connections within the home for network level 4.**

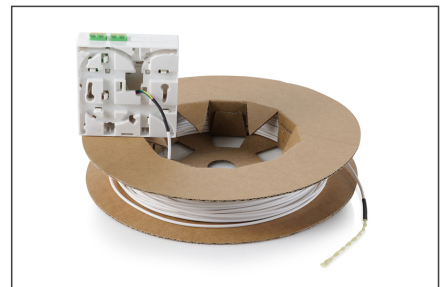
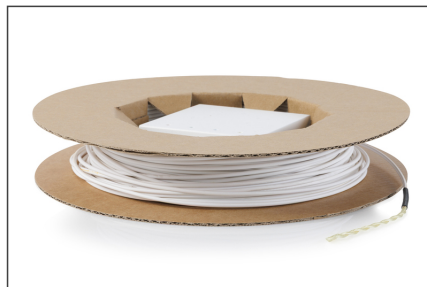
- FTTH junction box :
- Suitable for wall and DIN rail mounting
- 2x LC-APC duplex fiber optic coupler with shutter
- The shutter of the clutch protects against lasers and dust

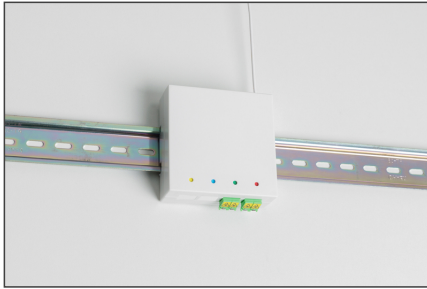
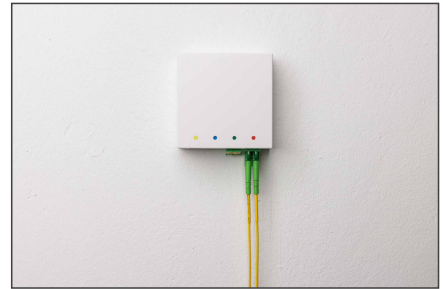
- Adapter type : LC/APC Duplex
- Number of ports: 4
- Number of equipped ports: 2
- Integrated splice cassette
- Smooth unwinding of the cable
- Color : White
- Working temperature : -40 - + 65 C
- Material: ABS
- FTTH drop cable :
- 4 fibres 9/125µm G.657A2 bend-optimized
- Cable diameter : 2.0mm
- 900µm buffer, easily removable
- Aramid strain relief
- LSOH outer sheath, color white
- Cable structure: I-V(ZN)H
- CPR class : B2ca
- Operating and storage temperature (□) : -15 - +70
- Installation Temperature range (□) : -10 - +60

### Package contents

- Fttx installation kit, pre-assembled, 4-fiber, LC/APC connector, length 50 m
- Mounting accessories (screws and dowels)

## More images:





#### Safety notes

- Avoid direct contact with light sources: Fiber optic cables, especially those with active light sources such as lasers (e.g. in optical communication systems), can emit dangerous radiation that can damage eyes. Take care never to look directly into the light of an optical fiber, even if the light source is invisible to the naked eye.
- When working with fiber optic cables, especially during tests or when working with lasers, protective goggles should always be worn to protect against harmful radiation.
- When plugging and unplugging the cable, only grasp the plug and do not pull directly on the cable.
- Do not kink or crush: Fiber optic cables are sensitive to mechanical stress.
- To protect cables from physical damage, they should be laid in special ducts or with protective materials
- Keep cable connectors clean: Fiber optic cables are sensitive to dust and dirt. Even small particles on the connectors can severely impair the signal quality.
- Cables should not be used in environments with extremely high or very low temperatures. Observe the product information on the maximum operating temperature of the cable
- Check cables regularly for visible damage such as cracks, kinks or signs of wear. Defective cables should be replaced immediately.