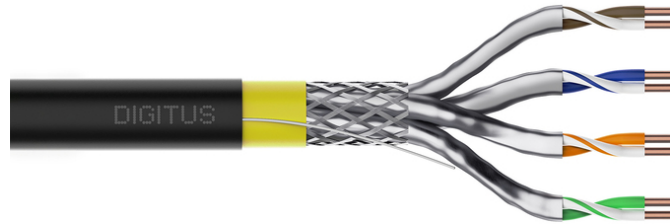


CAT 7A S/FTP data cable - outdoor installation cable, 1000 m drum, simplex, PE

DK-1743-A-VH-10-OD
EAN 4016032508663



CAT 7A S-FTP Universal installation cable, 1500 MHz, AWG 22/1, with Rip cord, 1000m drum SX

The Digitus® Professional CAT 7A S/FTP outdoor cable is characterized by the following cable structure 4x2x AWG22/1 and achieves a transmission frequency of up to 1500 MHz. The cable has a PE outer sheath and a halogen-free inner sheath and conforms to the IEC 60332-1, FRNC-B, LSZH-1 and BauPVO Euroclass Dca standards. The cable is suitable for installation in dry or damp rooms, outdoors or in the ground. Conforms to the standards ISO/IEC 11801, DIN EN 50173, DIN EN 50288-4-1.

Future-oriented standards and high-end quality for your network.

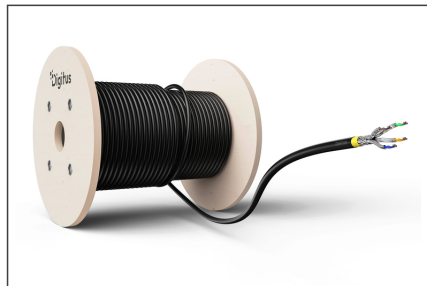
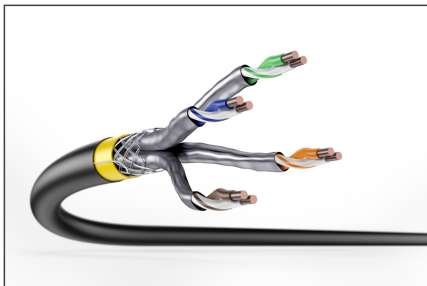
- Physical properties:
- Conductor: Bare copper wire, AWG 22/1
- Insulation: SFS-PE (foamed polyethylene jacket)
- Total number of insulated conductors: 8, twisted into 4 pairs
- Color code: Blue-white, orange-white, green-white, brown-white
- Shielding of the individual pairs: Aluminum-laminated polyester film, covers 100%
- Overall shielding: copper braiding
- Outer sheath: PE (polyethylene); UV-resistant

- Outer sheath thickness (nominal): 0.50 mm nominal
- Outer casing color: Black (RAL 9005)
- Mechanical properties:
- Strain relief: 150N max.
- Dynamic bending radius: 8x AD mm min.
- Static bending radius: 4x AD mm min.
- Transport and storage temperature range: -20 °C to +60 °C
- Operating temperature range: -50 °C to +60 °C
- Installation temperature range: 0 °C to +60 °C
- Outer diameter (nominal): 9.0mm (PE); 7.8 mm (LSZH -Dca)

Attributes

- Assortment: Twisted Pair Installation Cables
- Category: CAT 7A
- Shielding: S-FTP, pairs in metal foil and braid shielding
- CPR: Dca
- Length: 1000 m
- Color: black
- Jacket: PE
- Structure: 4 x 2 AWG 22/1, solid twisted pair

More images:



Safety notes

- Data cables must not be bent, stretched or twisted excessively. Sharp bends can damage the cable sheath and lead to failures or short circuits.
- Installation only by trained specialists.
- Installation only in dry rooms.
- The data cable must not be in direct contact with other electrical cables or high-voltage sources in order to avoid electromagnetic interference.