

Single Monitor Mount, 57", 27 kg

DA-90475
EAN 4016032505938



Single Monitor Mount, 57", 27 kg Gas Spring, VESA: 75x75, 100x100, Black

Single monitor mount - Fully mobile, resilient, space-saving The fully mobile table mount for single monitors impresses with its robust heavy-duty construction and reliably supports flat or curved screens up to 57 inches in size and weighing up to 27 kg. The integrated gas spring system with adjustable spring tension mechanism allows the monitor to be positioned effortlessly and precisely - according to individual requirements. With a generous range of movement, the mount allows the monitor to be tilted, swiveled, rotated and infinitely adjusted in height, ensuring ergonomic working and optimum viewing comfort. The VESA quick-release function allows the screen to be mounted or removed quickly and without tools, while the quick-release coupling ensures that the arms can be installed quickly. The mount is fully top-mounted on the desk and offers two flexible mounting options - both via a desk clamp and a grommet. Thanks to the integrated cable management, the workstation always remains tidy. An additional pole mount extends the adjustment options and rounds off the functional design.

Fully mobile table mount for screens up to 57" with a maximum weight capacity of 27 kg - suitable for flat screens as well as curved displays

- Maximum monitor size: 57"
- Maximum load: 27 kg
- Gas pressure spring with tension adjustment
- VESA compatibility: 75x75, 100x100
- Suitable for flat and curved monitors

- Tilting the monitor: 150° (+75° to -75°)
- Pivoting the monitor: 180° (+90° to -90°)
- Rotating the monitor: 180° (+90° to -90°)
- Full arm extension: 56.3 cm
- Pole mount height: 38.8 cm
- Mounting type: Clamp bracket or table feed-through
- Recommended tabletop thickness: Clamp: 12 - 45 mm, table bushing: 12 - 45 mm
- VESA Quick-Release function (quick-release fastener)
- Integrated cable management
- Material: steel, aluminum, plastic
- Dimensions: D 15.6 x W 63.4 x H 72.3 cm
- Weight: 4.8 kg
- Color: Black
- Tested & certified ergonomic product - Certified by IGR (Institute for Health and Ergonomics)

Attributes

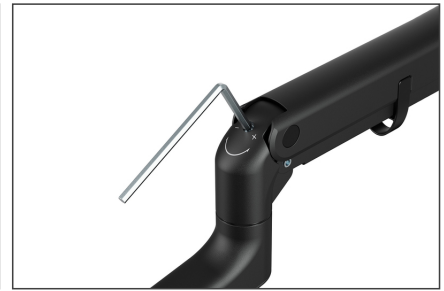
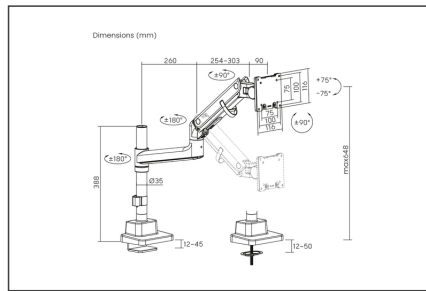
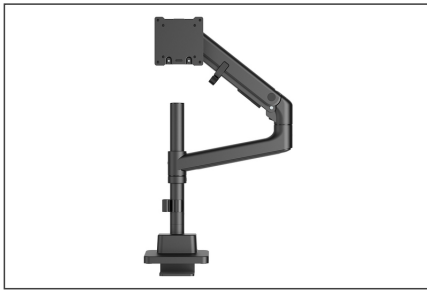
- Monitor weight (max.): 27 kg
- Mounting method: Clamp-mount
- Number of monitors: 1
- Size of monitors: up to 57"
- VESA mount: 75x75 mm, 100x100 mm

Package contents

- 1x monitor mount
- 1x mounting material & accessories
- 1x assembly instructions

Logistics						
	Number (pcs)	Weight (kg)	Depth (cm)	Width (cm)	Height (cm)	cm ³
Packaging Unit Carton	4	23.14	40.50	44.50	28.50	51,364.10
Packaging Unit Inside	1	5.79	0.00	0.00	0.00	0.00
Packaging Unit Single	1	5.79	19.50	43.30	13.30	11,229.90
Net single without Packaging	0	4.80	15.60	63.40	72.30	71,507.60

More images:



Safety notes

- Please read the entire manual before starting assembly and installation. Please contact your local dealer if you have any questions about the instructions or warnings.
- **CAUTION:** Use with products that exceed the permitted weight may result in damage or possible injury.
- Brackets should be fitted in accordance with the installation instructions. Incorrect installation can result in damage or injury.
- Use safety equipment and suitable tools. The product should only be installed by specialists.
- This product can be installed on timber-framed, solid concrete or stone walls.
- The load-bearing surfaces should be able to safely withstand the entire weight of appliances and all additional components.
- Only use the installation screws supplied and **DO NOT TIGHTEN** the screws **TOO TIGHT**.
- This product contains small parts that can cause a choking hazard if swallowed. Keep these parts away from children.
- Only use this product indoors. Using the product outdoors can lead to injury and damage.
- **IMPORTANT:** Before installation, please check all components received against the components list. If parts are damaged or missing, ask your local dealer for replacement parts.
- **MAINTENANCE:** Check the bracket regularly for safety and stability (preferably every three months).