

# CAT 8.1 S/FTP patch cable, 0.5 m, 10 pieces

DK-1843-005-10  
EAN 4016032505303



**CAT 8.1 S-FTP patch cord, Cu, LSZH AWG 24/7, length 0.5 m, color black, 10 pcs.**

The DIGITUS® Category 8.1 Class I patch cables are manufactured and tested according to the ISO/IEC 11801 and DIN EN 50173 CAT 8.1 standard. They guarantee that the cable installation complies with the ISO & EN Channel specification and offer excellent performance in DIGITUS® CAT 8.1 cabling. The performance has been tested up to 2,000 MHz, including performance characteristics such as near-end crosstalk ("NEXT"). The DIGITUS® patch cables have been specially developed to fully meet all requirements in the various application areas. Each cable is equipped with a molded anti-kink grommet with strain relief. The grommet also has a latching lever protection, which prevents the cable from getting caught and the latching lever from breaking off the plug.

**The high-end network solution according to the CAT 8.1 standard**

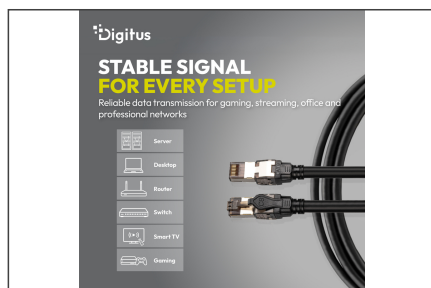
- 2 x RJ45 plug connector (PCB)
- RJ45 plug connector 3 µ nominal gold-plated over 60 µ nickel-primed contact pins
- FO-PE (foamed polyethylene) insulation
- Total diameter 8.0 mm ± 0.2 mm
- Bending radius 15x OD
- Wiring standard EIA/TIA 586B
- Color code orange x white, green x white, blue x white, brown x white
- Pin assignment 1:1

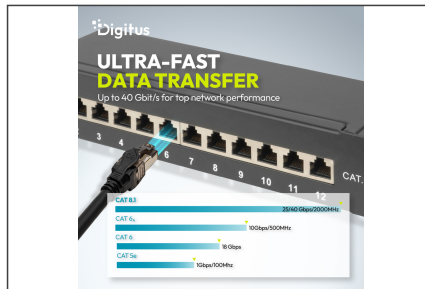
- Contact resistance 750 mating cycles
- Contact resistance 30 mΩ maximum
- Unbalanced resistance 3% maximum
- Insulation resistance 2500 VDC for 3 seconds
- Uninsulated resistance 150 MΩ/km minimum
- Operating temperature -20 °C to +60 °C
- NVP 72%
- Flame resistance IEC 60332-1
- Smoke emission IEC 61034
- Typical applications IEEE 802.3 Ethernet (10/100/1000BASE-T)
- PoE according to IEEE 802.3af/at/bt (PoE+, PoE++ type 3 & 4)
- Standards ISO/IEC 11801-1; EN-50173; ANSI/TIA 568-C; EN 60603-7-5
- 10 pieces

#### Attributes

- Assortment: Twisted Pair Patch Cables
- Configuration: 1:1
- Category: CAT 8.1
- Shielding: S-FTP, pairs in metal foil and braid shielding
- Length: 0.5 m
- Color: black
- Jacket: LSOH
- Slim Version: no
- Structure: 4 x 2 AWG 24/7, twisted pair
- Flat Version: no

#### More images:





#### Safety notes

- When plugging and unplugging the cable, only grasp the plug and do not pull directly on the cable.
- Cables must not be kinked sharply or bent at tight angles, as this can damage the inner wires and lead to failures.
- Make sure that the cables are not under tensile load, as this can damage the insulation and the wires inside the cable.
- Ensure that cables are not laid in areas where they can be easily damaged mechanically.
- Cables should not be used in environments with extremely high or very low temperatures. Observe the product information on the maximum operating temperature of the cable
- Check cables regularly for visible damage such as cracks, kinks or signs of wear. Defective cables should be replaced immediately to avoid failures, short circuits or even electric shocks.