

# DIGITUS® FTTH pre-assembled drop cable, blow-in, singlemode, 1 fiber, LC/APC, 30 m

DK-3901LCA-30

EAN 4016032501251



## FTTH Preterminated cable, Singlemode, 1 Core Blowable, LC-APC to LC-APC, 30 m

The blow-in cable is a specialized fiber optic cable designed for efficient and fast installation using air pressure blow-in technology in microducts. This cable comes with factory pre-terminated polished connectors, eliminating the need for on-site splicing and significantly reducing installation time and potential points of failure. It enables fast and uninterrupted installation of fiber optic connections to homes and businesses. It ensures high-quality, fast and low-latency connections within complex network infrastructures and offers a future-proof solution for modern fiber optic networks by optimally combining efficiency, reliability and scalability. By using pre-terminated, blow-in technology, installers and network operators can significantly reduce installation times while ensuring long-term stable performance in demanding broadband applications.

**The pre-assembled, blow-in cable is characterized by high flexibility, low friction and prefabricated connectors. It enables fast and reliable installation without splicing work on site. Ideally suited for FTTH applications.**

- Product type: Pre-assembled, blow-in FTTH drop cable
- Fiber type: Singlemode ITU-T G.657.A2 (insensitive to bending)
- Number of fibers: 1 fiber
- Cable length: 30 meters
- Outer diameter : 4,4 mm
- Outer diameter stopper: 5.6 mm
- Strain relief / reinforcing elements: Aramid yarn (Kevlar)
- Sheath material: PE
- Color: White

- Connector type: LC/APC
- Length LC ferrule connector housing: 19,6 mm
- Length LC ferrule connector: 16.2 mm
- Stopper length: 28,5 mm
- Insertion loss: ≤ 0.3 dB
- Return loss: ≥ 60 dB (APC)
- Minimum bending radius (operation): ≥ 10 mm
- Operating temperature: -20 °C to +60 °C
- Storage temperature: -40 °C to +70 °C

### Attributes

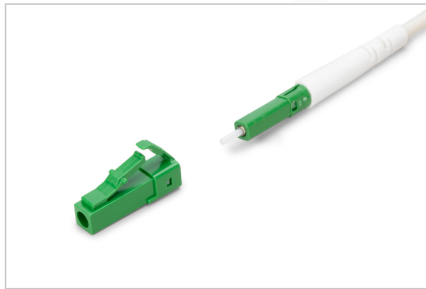
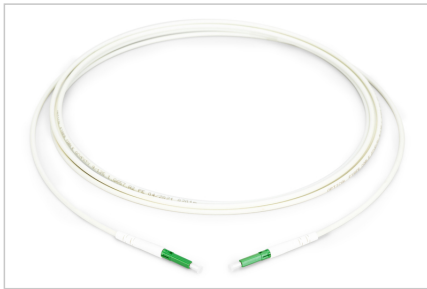
- Application: indoor
- Boot: single-color
- Cable diameter: 4.4 mm
- Cable jacket: PE
- Color cable: white
- Connector 1: LC (APC)
- Connector 2: LC (APC)
- Fiber class: OS2
- Fiber diameter: 9/125µ
- Mode: Singlemode
- Number of connectors side 1: 1
- Number of connectors side 2: 1
- Number of fibers: 1
- Polishing: APC
- Length: 30 m

### Package contents

- 1 x FTTH pre-assembled drop cable, blow-in, singlemode, 1 fiber, LC/APC, 30 m

Logistics						
	Number (pcs)	Weight (kg)	Depth (cm)	Width (cm)	Height (cm)	cm³
Packaging Unit Carton	40	9.32	45.00	45.00	25.00	50,625.00
Packaging Unit Inside	10	2.33	21.50	21.50	22.00	10,169.50
Packaging Unit Single	1	0.23	34.00	23.00	2.00	1,564.00
Net single without Packaging	0	0.19	19.00	19.00	3.00	1,083.00

**More images:**



**Safety notes**

- Avoid direct contact with light sources: Fiber optic cables, especially those with active light sources such as lasers (e.g. in optical communication systems), can emit dangerous radiation that can damage eyes. Take care never to look directly into the light of an optical fiber, even if the light source is invisible to the naked eye.
- When working with fiber optic cables, especially during tests or when working with lasers, protective goggles should always be worn to protect against harmful radiation.
- When plugging and unplugging the cable, only grasp the plug and do not pull directly on the cable.
- Do not kink or crush: Fiber optic cables are sensitive to mechanical stress.
- To protect cables from physical damage, they should be laid in special ducts or with protective materials
- Keep cable connectors clean: Fiber optic cables are sensitive to dust and dirt. Even small particles on the connectors can severely impair the signal quality.
- Cables should not be used in environments with extremely high or very low temperatures. Observe the product information on the maximum operating temperature of the cable
- Check cables regularly for visible damage such as cracks, kinks or signs of wear. Defective cables should be replaced immediately.

**EU responsible person**

EU based economic operator ensuring the product complies with the required regulations.

ASSMANN Electronic GmbH  
Auf dem Schüffel 3  
Lüdenscheid, Germany  
<https://www.assmann.com>  
[info@assmann.com](mailto:info@assmann.com)