

DIGITUS SOHO PRO wall-mounted enclosure - 483 mm (19") - 540x400 mm (WxD)

DN-49203

EAN 4016032493716



19" 7U wall mounting cabinet, SOHO PRO 370 x 540 x 400 mm, black

Whether in the home, office or for sub-distribution boards with limited space: With the compact 483 mm (19") solutions from the SOHO PRO series, you can install your network wherever you want. Available in four height units (4U, 7U, 9U, 12U), the wall-mounted enclosures are equipped with a full glass door and a cable entry in the top and bottom. Two pairs of galvanized 483 mm (19") profile rails, labelled with legible height units, are installed inside. These can be adjusted in depth. Each cabinet is a robust steel construction made of up to 1.5 mm thick sheet steel. The coloring takes the form of electrostatic powder coating in the standard colors grey (RAL 7035) and black (RAL 9005). The door hinges can be changed. The network enclosures are supplied unassembled in an optimized flat pack. Assembly takes place in just a few steps and is child's play thanks to the enclosed step-by-step instructions.

The DIGITUS® wall-mounted enclosure SOHO PRO series is characterized by its efficient delivery in an optimized flat pack and particularly user-friendly installation.

- Protection class IP20
- Lockable safety glass door
- 200° door opening angle
- 1-point locking on the front door

- 483 mm (19") profile rails mounted at the front inside the enclosure, galvanized
- 483 mm (19") profile rails are adjustable in depth
- 1.1 - 1.5 thick sheet steel with a high load-bearing capacity, powder-coated
- Cable entry with plastic cover in the roof and floor
- Ventilation slots for active and passive ventilation
- Installation depth for components max.: 327 mm
- Product dimensions (H x W x D): 370 x 540 x 400 mm

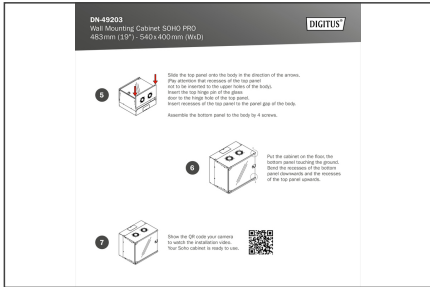
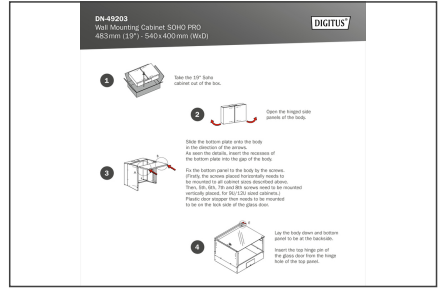
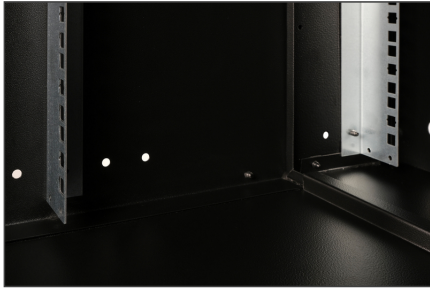
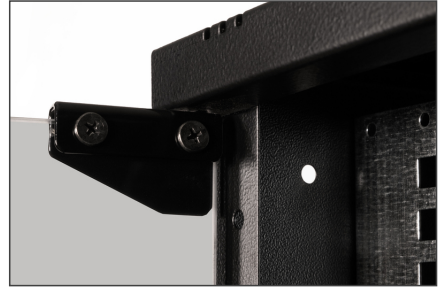
Attributes

- Cabinet type: Wall mounting cabinet
- Color: black, RAL 9005
- Depth: 400 mm
- Front door: Glass door, single opening
- Load capacity: 60 kg
- Side panels: Both sides
- Units: 7
- Width: 540 mm
- IP protection class: IP20
- Mounted: no

Package contents

- 2x key
- 1x QIG

Logistics						
	Number (pcs)	Weight (kg)	Depth (cm)	Width (cm)	Height (cm)	cm³
Packaging Unit Carton	1	9.88	58.00	38.50	17.50	0.00
Packaging Unit Inside	1	9.88	58.00	38.50	17.50	0.00
Packaging Unit Single	1	9.88	58.00	38.50	17.50	0.00
Net single without Packaging	0	9.11	40.00	54.00	37.00	79.92



- Ensure adequate ventilation to prevent the installed devices from overheating.
- Network cabinets should not be overfilled and the ventilation openings must not be blocked.
- Cables should be laid neatly and organized in cable ducts or trays.
- Use surge protection devices to protect sensitive devices from power surges or lightning strikes.
- Avoid moisture or wetness while observing the respective IP protection class.
- Ensure that the cabinet and the devices used are properly earthed.
- In regions with frequent thunderstorm activity, professional lightning protection should be integrated into the power supply.
- To avoid uneven loading, always mount the heaviest units at the bottom of the cabinet.
- Disconnect the installed devices from the power supply during maintenance or installation work.

ASSMANN Electronic GmbH
Auf dem Schüffel 3
Lüdenscheid, Germany
<https://www.assmann.com>
info@assmann.com