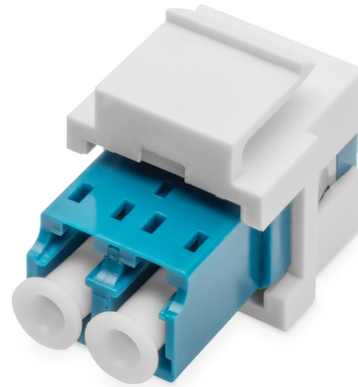


DIGITUS® Fiber optic LC/LC duplex coupler, Singlemode, Keystone module

DN-96007-1-K

EAN 4016032489801



Fiber LC-duplex coupler, SM, for keystone panel OS2, Color blue, incl. keystone frame

The fiber optic keystone couplers are used to connect two LC fiber optic cables to extend the length of the cable link. Installation is extremely simple with the snap-in technology. They can be easily snap into keystone patch panels or wall plates with standard openings, allowing to run cables through walls and conveniently connect to your fiber optic network.

The standardized dimensions of adapters makes it suitable for most conventional distributors and wall outlets making it a great solution for bringing fiber to the home and office.

- Connector Type : LC-LC Duplex
- Polish Type : UPC

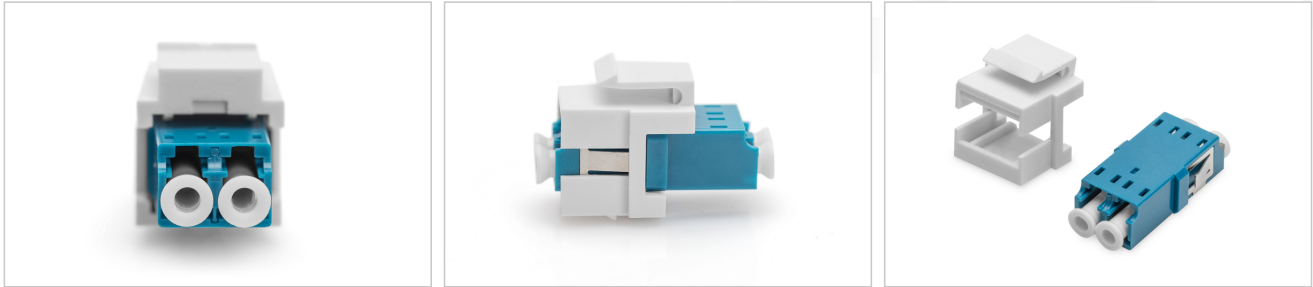
- Fiber Mode : Single Mode
- Mounting Type : Without Flange
- Color : Blue
- Sleeve Material : Ceramic
- Operating Temperature Range : -25 to 70°C
- Storage Temperature Range : -25 to 70°C
- Weight: 0.005 kg
- Dimensions (L x W x D) : 17 x 22 x 33 mm
- Dimensions (L x W x D) : 17 x 22 x 33 mm

Package contents

- LC/LC SM Coupler for Keystone Module

Logistics						
	Number (pcs)	Weight (kg)	Depth (cm)	Width (cm)	Height (cm)	cm ³
Packaging Unit Carton	1000	7.60	50.00	37.00	27.00	49,950.00
Packaging Unit Inside	500	3.80	24.00	35.00	25.00	21,000.00
Packaging Unit Single	1	0.01	2.30	7.00	10.00	161.00
Net single without Packaging	0	0.01	3.30	2.20	1.70	12.34

More images:



Safety notes

- Avoid direct contact with light sources: Fiber optic cables, especially those with active light sources such as lasers (e.g. in optical communication systems), can emit dangerous radiation that can damage eyes. Take care never to look directly into the light of an optical fiber, even if the light source is invisible to the naked eye.
- When working with fiber optic cables, especially during tests or when working with lasers, protective goggles should always be worn to protect against harmful radiation.
- When plugging and unplugging the cable, only grasp the plug and do not pull directly on the cable.
- Do not kink or crush: Fiber optic cables are sensitive to mechanical stress.
- To protect cables from physical damage, they should be laid in special ducts or with protective materials
- Keep cable connectors clean: Fiber optic cables are sensitive to dust and dirt. Even small particles on the connectors can severely impair the signal quality.
- Cables should not be used in environments with extremely high or very low temperatures. Observe the product information on the maximum operating temperature of the cable
- Check cables regularly for visible damage such as cracks, kinks or signs of wear. Defective cables should be replaced immediately.

EU responsible person

EU based economic operator ensuring the product complies with the required regulations.

ASSMANN Electronic GmbH
Auf dem Schüffel 3
Lüdenscheid, Germany
<https://www.assmann.com>
info@assmann.com