

# DIGITUS® 24 Port 10/100/1000 + 4SFP+ UPLINK Switch, 19", L2+ Features

DN-80223

EAN 4016032485452



## 24 Port GE 4 SFP+ UPLINK L2+ Switch 24 Port 10/100/1000+4SFP+ UPLINK Switch

Digitus DN-80223, with its 24 Gigabit RJ45 port and four independent SFP + fiber expansion slot, is ideal for connecting local networks to data centers. Equipped with 4 \* 10G SFP+ slot, flexibly expand your network. The 10G uplink switch provides high performance, enterprise QoS, advanced security policies and comprehensive layer 2+ management features. With all these advanced features, the switch is powerful and flexible enough to meet almost all IT needs.

## 24 Port 10/100/1000 + 4 10 G SFP+ UPLINK Switch, 19", L2+ Features

- Standards: IEEE 802.3, IEEE 802.3u, IEEE 802.3ab, IEEE 802.3z, IEEE 802.3x, IEEE 802.1X, IEEE 802.1q, IEEE 802.1p, IEEE 802.1d, IEEE 802.1w, IEEE 802.3ad
- Interface: 24\*10/100/1000Mbps RJ45 Port, 4\* 10G SFP+ Slots, 1\* Console
- Indicator: PWR, LINK/ACT, SYS
- Network media: 10BASE-T: UTP category 3,4,5 cable 100m, 100BASE-TX: UTP category 5, 5e cable 100m, 1000BASE-T: UTP category 5e, 5 cable 100m, 1000BASE-X: MMF, SMF, 10GBASE-X: MMF, SMF
- MAC Address Table: 16K, Auto-learning, Auto-aging
- jumbo frame: 12K Bytes
- Transfer Mode: Store-and-forward
- Packet Forward Speed: 95.23Mpps
- Switching Capacity: 128Gbps
- Packet buffer: 12Mbit
- Dimensions(L\*W\*H): 440\*260\*44mm
- Fan Quantity: Fanless
- Green energy saving: IEEE 802.3az
- Power supply: 24W
- Input Power Supply: 12V/2A
- Operating Temperature: 0°C ~ 40 °C
- Storage Temperature: -40 °C ~ 70 °C
- Operating Humidity: 10% ~ 90% non-condensing
- Storage Humidity: 5% ~ 90% non-condensing
- System Settings: Basic information, system status, user management, SNTP configuration, importing/exporting configuration files, firmware upgrade

- Port Settings: Basic configuration, port statistics, Broadcast Storm, Port Rate limiting, Port security, link aggregation, port Mirroring, and port Isolation, Port aggregation, Load balancing, static aggregation, LACP
- MAC binding: MAC static binding, dynamic learning, MAC binding automatic conversion, MAC aging and learning restriction, and MAC filtering
- VLAN configuration: VLAN information, VLAN configuration, VLAN port configuration, Voice VLAN, QinQ, Guest-VLAN, GVRP, MVR
- ARP: IP Source Guard, ARP Check, gratuitous-ARP, ARP defense, DAI, tri-binding
- DHCP: IPV4/IPV6 DHCP Snooping, DHCP Server, DHCP Relay
- STP: STP/MSTP/RSTP, PortFast, Root Guard, Bpdu Guard
- SNMP configuration: SNMP community, SNMP view, SNMP TRAP, SNMP(V1, V2C, V3)
- RMON configuration: RMON(1,2,3,9)
- ACL configuration: Standard ACLs, ipv6-based ACLs, extended ACLs, Mac-based ACLs, expert ACLs, and time-range ACLs
- QOS configuration: QOS Application, QOS Scheduling Strategy, Queue Mapping (DSCP&CoS)
- IGMP Snooping configuration: IGMP SNOOPING configuration, multicast group information, IGMP SNOOPING VLAN, IGMP SNOOPING (V1, V2, V3)
- ERPS: ERPS configuration, ERPS mode, ERPS role
- LLDP: LLDP TLV configuration to view neighbor information
- Error-Disable: Error-Disable, Loopback-detection
- Web tools: Ping/Ping6, Traceroute/Traceroute 6, cable detection
- Log management: Log management and Debug information

### Attributes

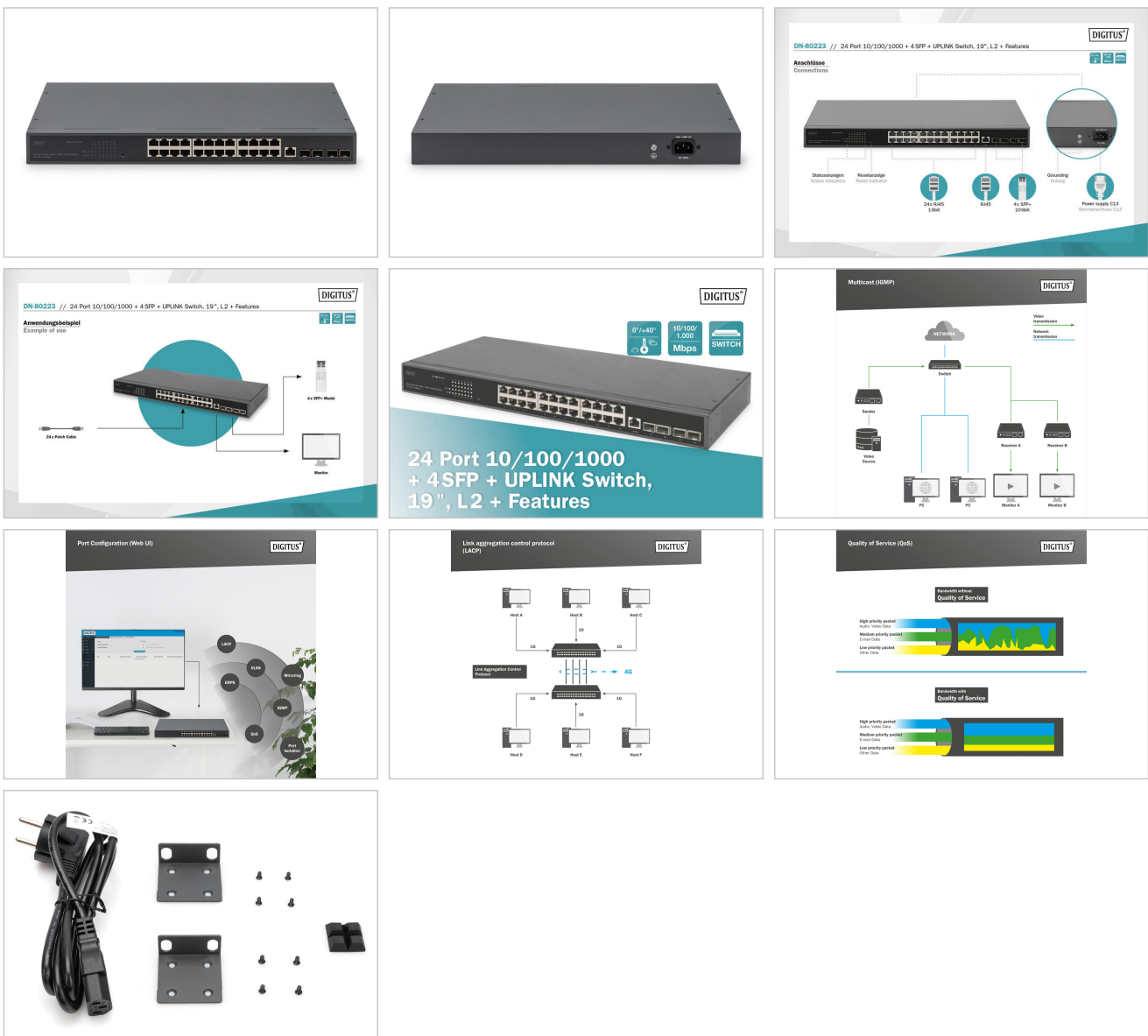
- Industrijska uporaba: Ne
- PoE (napajanje preko Ethernet): Ne
- Prikladno za vanjsku primjenu: Ne
- Upravljanje: Da
- VLAN: Da
- Vrsta instalacije: 19 inča
- Zaštita od vandalizma: Ne

### Package contents

- 24 Port RJ45, 4 10G SFP+ Uplink Switch
- Power Cord
- Manual

Logistics						
	Number (pcs)	Weight (kg)	Depth (cm)	Width (cm)	Height (cm)	cm <sup>3</sup>
Packaging Unit Carton	5	19.00	38.90	50.90	34.50	68,310.30
Packaging Unit Inside	1	3.80	0.00	0.00	0.00	0.00
Packaging Unit Single	1	3.80	31.50	49.50	72.00	112.27
Net single without Packaging	0	3.16	26.00	44.00	44.00	50.34

More images:



Safety notes

- This product is intended for indoor use only.
- Read all instructions and follow all warnings and instructions on the device.

- Do not place this appliance on an unstable surface (such as a trolley, stand, table, etc.).
- Do not use this appliance near water.
- Do not place this appliance near or above a radiator.
- The housing is equipped with openings for heat dissipation and ventilation. To prevent overheating during operation, the ventilation openings must not be blocked or covered.
- Do not place the appliance on a soft surface (e.g. bed, sofa, blanket, etc.). This will block the ventilation.
- The appliance must not be installed in a closed environment if adequate ventilation is not guaranteed.
- Do not spray any liquids onto the appliance.
- Disconnect the mains plug before cleaning. Do not use any liquid or foam cleaners.
- Clean the appliance with a damp cloth.
- Connect the device according to the power supply on the rating plate.
- To prevent damage to the appliance, it is important that all appliances are properly earthed.
- Do not place any objects on the power cable and lay it in such a way as to avoid tripping hazards.
- Use a surge protector, a regulator or an uninterruptible power supply (UPS) to protect your system from sudden, temporary and reduced power.
- Secure the system cable and mains cable properly and ensure that no objects are pressing on the cable.
- Do not insert any objects into the appliance through the openings in the housing. There is a risk of a short circuit, which can lead to fire or electric shock.
- Do not attempt to repair the appliance yourself. Always contact an authorized customer service centre.
- If any of the following conditions occur, unplug the appliance and return it to an authorized service centre for repair
  - The mains cable, power supply unit or plug for the power supply is damaged or worn;
  - Liquid has penetrated the appliance;
  - The device has been exposed to rain or water;
  - The device has been dropped or the housing has been damaged;
  - The function of the device has obviously changed;
- The appliance cannot be operated as described in the operating instructions.

**EU responsible person**

EU based economic operator ensuring the product complies with the required regulations.

ASSMANN Electronic GmbH  
Auf dem Schüffel 3  
Lüdenscheid, Germany  
<https://www.assmann.com>  
[info@assmann.com](mailto:info@assmann.com)