

# Smart Full HD PT Indoor Camera with Auto-Tracking, WLAN + Voice Control

DN-18603

EAN 4016032478867



## Smart Wifi Camera(Without Lan port) P/T Indoor

The WLAN Camera from DIGITUS® can be rotated by 355° and swiveled by 90°, and is equipped with auto tracking to enable automatic tracking of movements within the visual field. Thanks to the wide angle lens of 100° in razor-sharp Full HD resolution, you won't miss a single detail. Automatic day / night vision switching offers a clear view even in absolute darkness. WLAN operation means that you are 100% flexible when it comes to the installation location, simply position the camera within range of your wireless network and ensure the power supply. Using voice control with Amazon Alexa and Google Assistant you can show the camera image on compliant Amazon and Google displays. The camera is also able to recognize and track movement in the image area and send an appropriate push notification to your smartphone. The available microSD card slot can be used for cards up to 128 GB, so that recordings can be stored for longer periods and retrieved at any time. Thanks to two-way audio transmission, you can communicate with people in front of the camera. The live image from the camera and all settings can be easily viewed and set using the app, regardless of your location (mobile reception required). The camera is designed for a variety of applications, for example monitoring interior spaces of all kinds, baby monitoring or pet monitoring. Thanks to the bracket included in delivery, the camera can be individually aligned and attached - alternatively using the integrated 1/4" screw thread. Focus on safety and flexibility with the voice operated Full HD PT indoor camera from DIGITUS®.

## Auto-tracking, rotating and pivoting (PT), WLAN, two-way audio, compatible with Amazon Alexa & Google Assistant

- Video resolution: 1920 x 1080p@25 Bps (Full HD)
- Video compression: H.264
- Bit rates: 16 Kbps - 2 Mbps
- Lens: FOV: 100° viewing angle / 3.6 mm lens
- Rotatable by 355° (PAN) / Swivel range 90° (TILT)
- Supports motion detection with auto tracking (movement tracking)
- Light sensitivity: 0.1 Lux / Aperture: F1.2

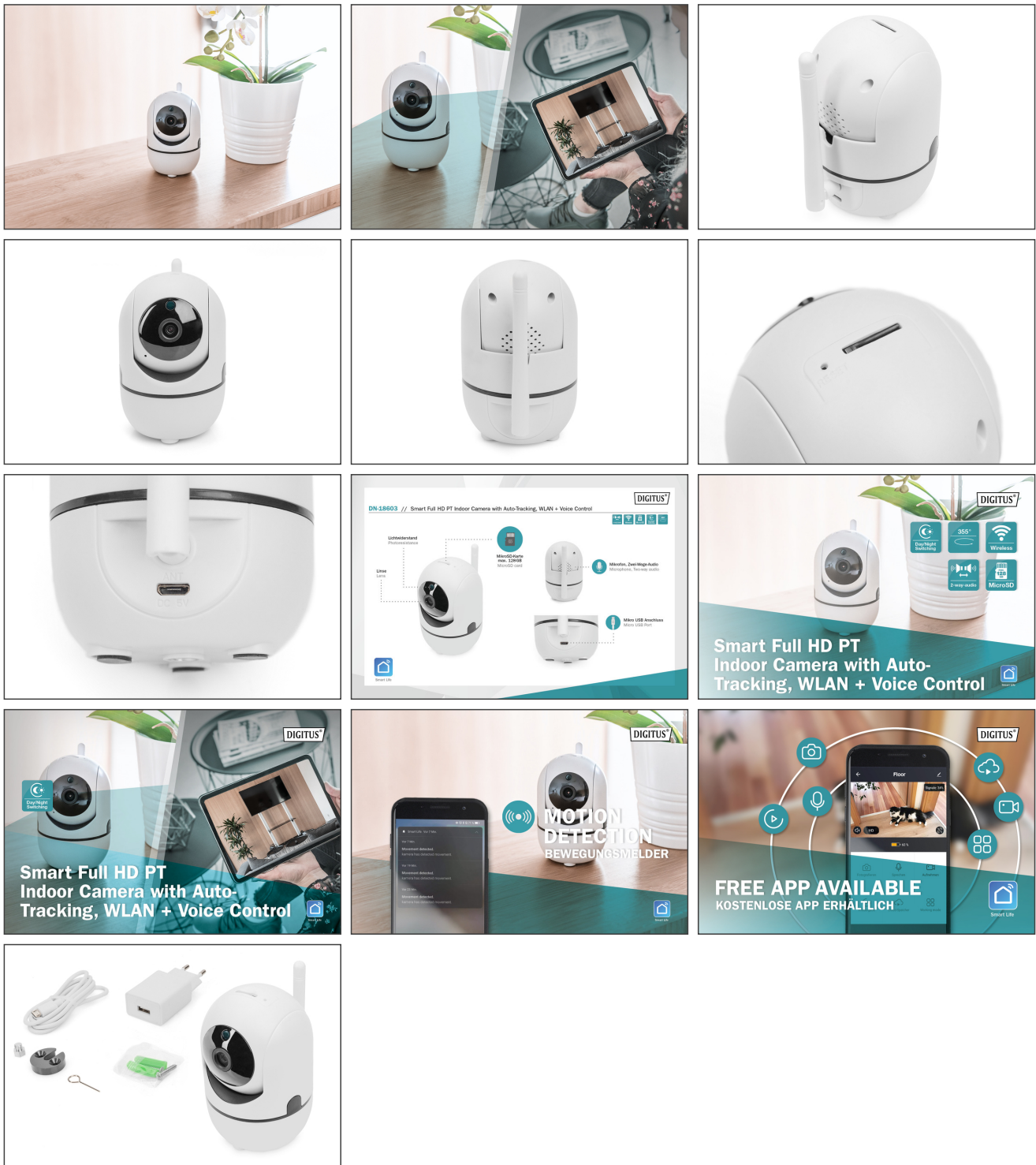
- Sensor: 1/2.7" CMOS - 2 megapixel
- Night vision range: Up to 5 m
- Day / night switching: IR-CUT (automatic white balancing)
- Video frame rate: Mainstream 1080p@25bps, 720p@25bps
- Infrared LEDs: 6 pcs.
- Integrated speaker and microphone
- Two-way audio communication / compression: G.711
- Wireless LAN: 2.4 GHz (IEEE 802.11b/g/n)
- Recording modes: Manual / Motion / Scheduled
- With microSD card slot
- microSD card storage capacity: Up to 128 GB
- Supports cloud storage
- Network protocol: TCP/IP, UDP, DDNS, P2P, RTSP, Private Cloud, ONVIF
- System requirements: iOS 7 / Android 4 or higher
- Security: User authentication, software encryption
- Power supply camera: USB 5 V DC / 1.5 A via MicroSD jack
- Power consumption: 2 - 4 W max.
- Power adapter input voltage: 100 - 240 V, 50/60 Hz, 0.35 A via Euro plug Type C (CEE 7/16)
- Power adapter output voltage: 5 V DC, 1.5 A, 7.5 W via coaxial plug 5.5 mm
- Integrated 1/4" screw thread for optional mounting options
- Adapter for wall and ceiling mounting included
- Operating temperature: -10°C ~ +50°C
- Dimensions: L 85 x W 67 x H 105 mm
- Material: Plastic
- Weight: 280 g incl. bracket
- Color: White

## Package contents

- 1 x Smart Full HD PT Indoor Camera with Auto-Tracking, WLAN + Voice Control
- 1 x USB power adapter incl. USB cable x 1m
- 1 x Mounting adapter / mounting material
- 1 x Quick installation guide

| Logistics                    |              |             |            |            |             |                 |
|------------------------------|--------------|-------------|------------|------------|-------------|-----------------|
|                              | Number (pcs) | Weight (kg) | Depth (cm) | Width (cm) | Height (cm) | cm <sup>3</sup> |
| Packaging Unit Carton        | 50           | 17.00       | 29.50      | 63.00      | 47.00       | 0.00            |
| Packaging Unit Inside        | 1            | 0.34        | 0.00       | 0.00       | 0.00        | 0.00            |
| Packaging Unit Single        | 1            | 0.34        | 11.80      | 13.80      | 8.80        | 0.00            |
| Net single without Packaging | 0            | 0.28        | 8.50       | 6.70       | 10.50       | 597,975.00      |

#### More images:



---

### Safety notes

- Do not open the appliance under any circumstances. It does not contain any serviceable parts. In the event of a fault, have the appliance checked and repaired by a specialist.
- For safety and approval reasons, the appliance must not be converted or modified.
- If you have any problems, please contact our customer service.
- Only use the device with the original power supply unit supplied.
- The appliance may only be connected to easily accessible sockets.
- In case of danger, pull out the mains plug.
- Only connect protection class I devices to properly earthed power sources.
- Only operate the appliance via a residual current circuit breaker (maximum 30 mA)
- Never touch the mains plug and socket with wet hands.
- Do not connect the device to cable reels
- The mains plug and coupling of an extension lead must be watertight and must not lie in water
- Always route cables to the appliance so that they do not pose a danger to people or animals.
- Only use the appliance within the specified temperature range.
- When you are not using the product, store it in a clean and dry place at temperatures between 0°C and 40°C
- During thunderstorms, there is a risk of overvoltage due to lightning strikes. Disconnect all connections to the device during thunderstorms.
- The device is not a toy! Keep the appliance out of the reach of children. Any packaging material lying around, such as plastic bags, foils or cushioning elements such as polystyrene, can be dangerous for children.
- Harsh cleaning agents or solvents can damage the product
- Disconnect the product from the power source before cleaning it.
- Use a lint-free cloth for cleaning.
- We accept no liability for damage to property or personal injury caused by improper handling of the appliance or failure to observe the hazard warnings.
- We accept no liability for consequential damage! In such cases, all warranty claims expire.