

DIGITUS Dual M.2 NVMe SSD Docking Station with Offline Clone Function, USB-C™

DA-71545

EAN 4016032475842



NVMe Clone station USB3.1 Gen2 type-C NVMe M.2 SSD enclosure

The Dual NVMe Docking Station from DIGITUS® can accommodate M.2 SSDs of up to 4 TB per box. Manage a total of 2 SSDs in various formats with a total storage of up to 8 TB. The integrated offline clone function even makes it possible to duplicate storage media by pressing a button without a connected end device. The copying progress is displayed by LED indicators on the device. Supports M-Key and B+M Key NVMe SSDs in the common formats 2242, 2260, 2280 & 22110. Easily extend the storage capacity of numerous USB-C™ devices such as PCs, notebooks, TVs, gaming consoles or routers.

Manage 2 M.2 NVMe SSDs using a USB-C™ connection - also clone M.2 SSDs offline by pressing a button

- 2-Box Docking Station for NVMe M.2 SSDs
- Capacity: max. 4 TB per box
- Supported formats: 2242, 2260, 2280 & 22110 / M-Key, B & M-Key SSDs (NVMe)
- USB-C™ connections: 1 x Data USB-C™ 3.2 Gen2, 1 x Power jack USB-C™
- Backwards-compatible with USB 3.0 / USB 2.0
- Maximum transfer rate USB-C™: 10 Gbps
- Modes: Clone and dual mode

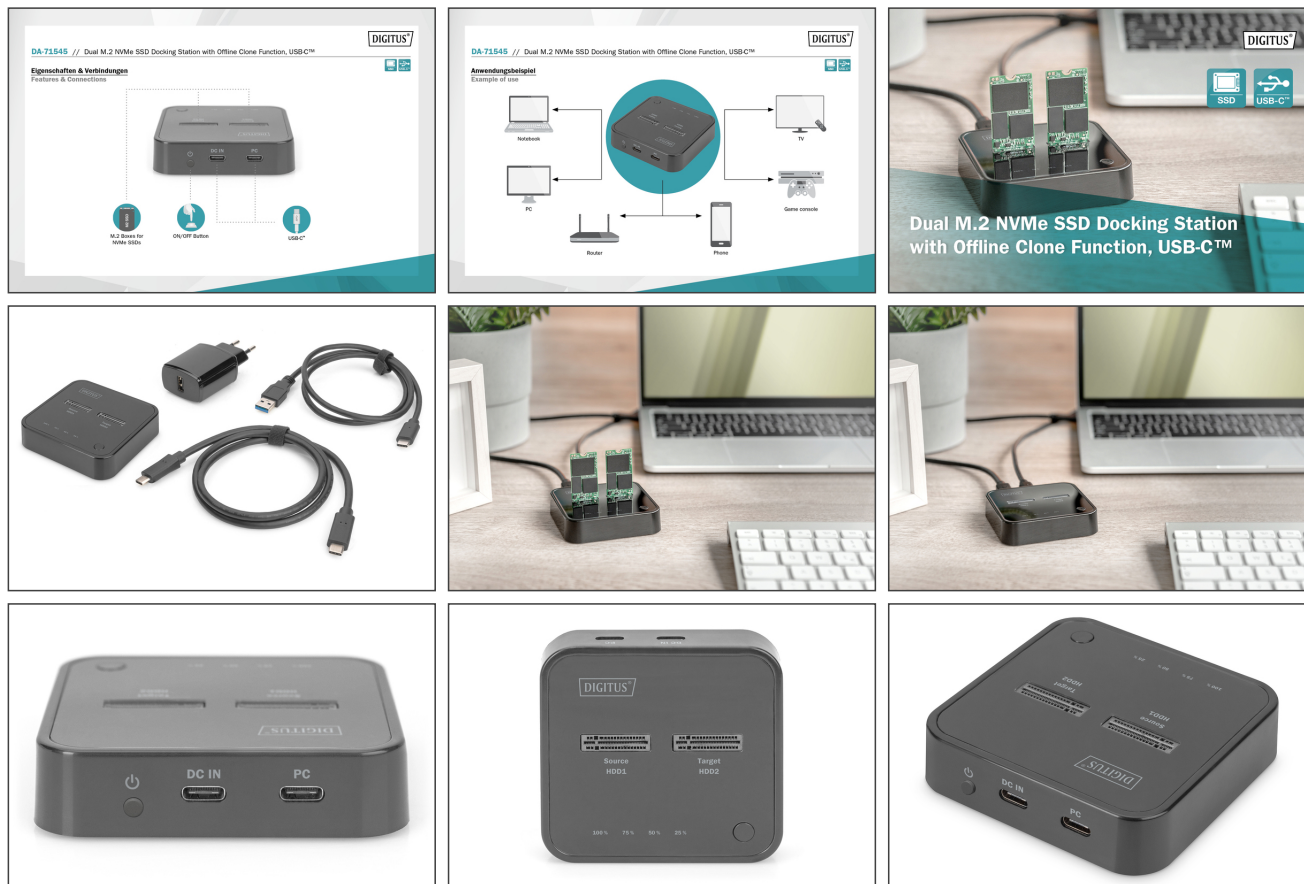
- Supports Hot Swap (Plug in and eject during operation)
- Offline clone function by pressing a button (possible without PC)
- LED indicators for copying progress (25%, 50%, 75%, 100%)
- Applications PC, notebook, TV, router or gaming console (with USB-C™ connection)
- Storage formats: NTFS, FAT, FAT32
- Input voltage USB power adapter: 100 - 240 V AC / 50/60 Hz, 0.6 A - Euro plug: Type C (CEE 7/16)
- Power supply via USB: 5 V / 3 A
- Systems: Windows 10/8/8.1/7/XP, macOS 10.0 or higher
- Dimensions: W 7.9 x D 7.7 x H 1.8 cm
- Weight: 152 g
- Material: ABS
- Color: Black

Package contents

- 1 x Dual M.2 NVMe SSD Docking Station with Offline Clone Function, USB-C™
- 1 x USB A power adapter
- 1 x USB-C™ connecting cable, 80 cm
- 1 x USB-C™ to USB A connecting cable, 80 cm
- 1 x Quick start guide

Logistics						
	Number (pcs)	Weight (kg)	Depth (cm)	Width (cm)	Height (cm)	cm³
Packaging Unit Carton	20	8.00	28.70	30.00	26.50	0.00
Packaging Unit Inside	1	0.40	0.00	0.00	0.00	0.00
Packaging Unit Single	1	0.40	12.60	13.70	5.70	983,934.00
Net single without Packaging	0	152.00	7.64	7.88	1.80	108.37

More images:



Safety notes

- Overloading can lead to overheating and damage to the appliance or the connected peripherals.
- If necessary, use an external power supply to ensure stable performance.
- If devices such as external hard disks or printers that require a high power consumption are connected, the device should be used with an external power supply. Otherwise, the device could be overloaded or functional problems could occur.
- Do not expose the device to rain, moisture, vapors or liquids.
- Do not insert any objects into the device.
- Do not attempt to repair the unit or open the housing without authorization. You risk an electric shock!
- Ensure adequate ventilation to prevent damage due to overheating.
- Dust, moisture, vapors and strong cleaning agents or solvents can cause damage to the device.
- Disconnect the appliance from the power supply and the connected devices before cleaning.
- Clean the device with a dust-free cloth.

EU responsible person

EU based economic operator ensuring the product complies with the required regulations.

ASSMANN Electronic GmbH
Auf dem Schüffel 3
Lüdenscheid, Germany
<https://www.assmann.com>
info@assmann.com