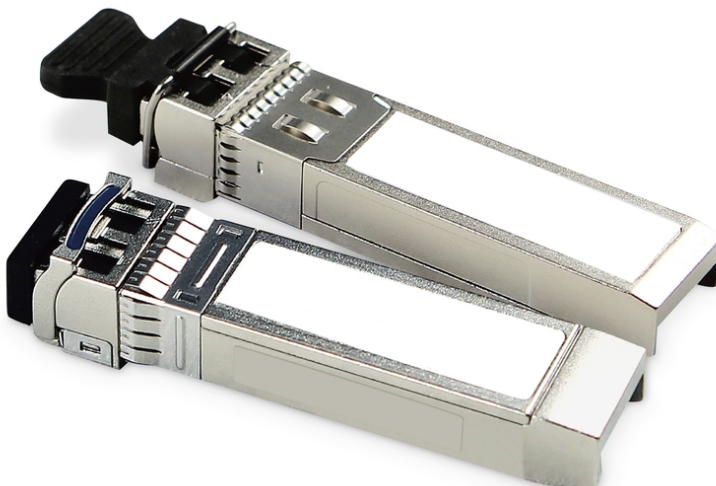


mini GBIC (SFP) Module, 25 Gbps, 10 km, with DDM function

DN-81251
EAN 4016032460275



mini GBIC (SFP) Modul, 25Gbps, 10km

The DIGITUS® Mini GBIC (SFP) transceiver modules offer highest quality and reliability. Whether from switch to switch, converter to switch, converter to converter or further, extensive application possibilities: The large variety of DIGITUS® modules allows you a flexible use of fiber optic technology. Compatibility with the MSA (Multi Source Agreement) standard ensures compatibility with third-party manufacturers. Use transfer rates of up to 25 Gbps to make your network future-proof in terms of speed. The DDM function gives you an overview of the parameters of your SFP module at all times.

Plug and Play fiber optic connection

- Mini GBIC SFP (Small Form Factor Pluggable) module
- Compatible with the following manufacturers: Allied Telesis, Allnet, Avaya, CISCO, D-Link, Edimax, FINISAR, FORCE 10, Gigamon, Intellinet, KTI Networks, Level One, PLANET, Tenda, TP-Link, TRENDnet, Mikrotik, ENTERASYS, RIVERSTONE, Unifi, Ubiquiti, ZyXEL, ZTE
- Supports DDM (Digital Diagnostic Monitoring)
- High quality and highest reliability
- 25 Gbps maximum data rate
- Compliant to IEEE802.3by 25 Gigabit standard + SFF-8402, SFF-8432
- Classe 1 Laser product acc. to EN 60825-1
- Easy installation thanks to Plug and Play

- MSA SFP 28 (Multi Source Agreement) compliant
- Hot pluggable
- Connector: 1 x LC Duplex
- Wavelength: 1310nm-DFB, DML laser transmitter, Singlemode
- 80 nm high sensitive PIN-TIA receiver
- Transmission via SMF: max. 10 km
- Transmission power : minimum -4,5 dBm, maximum 2,5 dBm
- Receiving sensitivity: Minimum -11,4 dBm
- Safe quick lock mechanism
- 3.3 V power supply
- Operating temperature: 0°C to 70°C
- Measurements: L 57 x B 13,9 x H 8,6 mm

Attributes

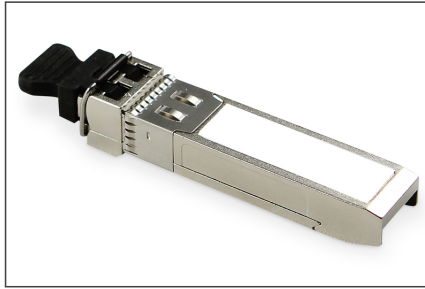
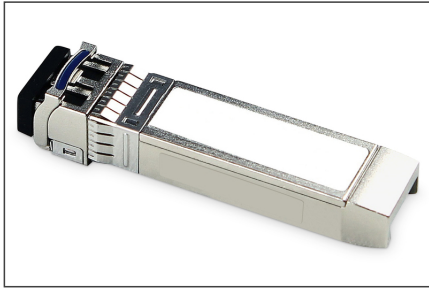
- Mode: Singlemode
- Connector: LC
- Distance (km): 10
- Wavelength: 1310 nm
- DDM Support: yes
- Broadcasting Mode: Unidirectional
- Manufacturer compatibility: Universal (MSA), Cisco
- Ethernet speed: 25 Gigabit

Package contents

- mini GBIC (SFP) Modul

Logistics						
	Number (pcs)	Weight (kg)	Depth (cm)	Width (cm)	Height (cm)	cm ³
Packaging Unit Carton	240	8.16	39.40	56.00	25.40	0.00
Packaging Unit Inside	1	34.00	0.00	0.00	0.00	0.00
Packaging Unit Single	1	34.00	5.50	11.60	2.90	185.02
Net single without Packaging	0	28.00	1.39	5.70	0.85	6.73

More images:



Safety notes

- Avoid direct contact with light sources: Fiber optic cables, especially those with active light sources such as lasers (e.g. in optical communication systems), can emit dangerous radiation that can damage
- eyes. Take care never to look directly into the light of an optical fiber, even if the light source is invisible to the naked eye.
- When working with fiber optic cables, especially during tests or when working with lasers, protective goggles should always be worn to protect against harmful radiation.
- When plugging and unplugging the cable, only grasp the plug and do not pull directly on the cable.
- Do not kink or crush: Fiber optic cables are sensitive to mechanical stress.
- To protect cables from physical damage, they should be laid in special ducts or with protective materials
- Keep cable connectors clean: Fiber optic cables are sensitive to dust and dirt. Even small particles on the connectors can severely impair the signal quality.
- Cables should not be used in environments with extremely high or very low temperatures. Observe the product information on the maximum operating temperature of the cable
- Check cables regularly for visible damage