

# DIGITUS® Modular Patch Panel, 12-port

DN-91419

EAN 4016032455561



**Modular Patch Panel, shielded, 12-Port Blank, 1U, 254mm (10") Rack Mount, grey RAL 7035**

Modular Patch Panel, shielded, 12-Port, Blank, 1U, 254mm (10") Rack Mount, grey RAL 7035

**Suitable for shielded and unshielded DIGITUS® Keystone Modules and Couplers**

- Patch Panel for Keystone Modules
- Shielded
- Suitable for 254 mm (10") Rack Mount

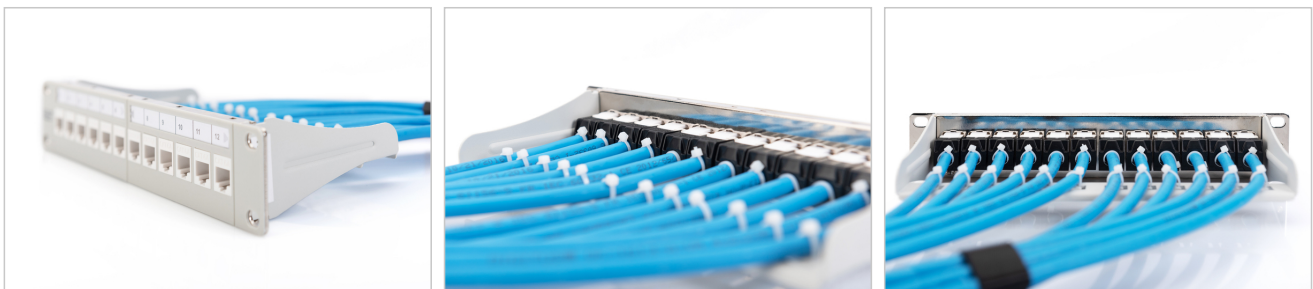
- 1U
- Color grey (RAL 7035)
- Label window with tag

**Attributes**

- Color: light grey, RAL 7035
- Ports: 12
- Units: 1
- Category: CAT 6A

Logistics						
	Number (pcs)	Weight (kg)	Depth (cm)	Width (cm)	Height (cm)	cm³
Packaging Unit Carton	20	8.30	52.00	28.00	30.00	43.68
Packaging Unit Inside	1	0.42	12.00	27.00	5.50	1.78
Packaging Unit Single	1	0.42	12.00	27.00	5.50	1.78
Net single without Packaging	0	0.30	1.20	25.40	4.40	134.11

**More images:**





#### Safety notes

- Protect product from moisture
- Avoid antistatic charging when installing the product
- Observe the specifications of the raw cable manufacturer during installation

#### EU responsible person

EU based economic operator ensuring the product complies with the required regulations.

ASSMANN Electronic GmbH  
Auf dem Schüffel 3  
Lüdenscheid, Germany  
<https://www.assmann.com>  
[info@assmann.com](mailto:info@assmann.com)