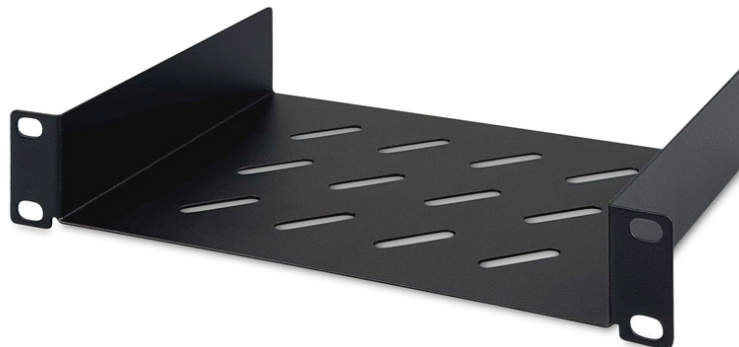


DIGITUS® 254 mm (10") 1U shelf

DN-10-TRAY-1-B

EAN 4016032454793



254 mm (10") 1U fixed shelf 44x254x150 mm, color black (RAL 9005)

The 10" shelves from DIGITUS® consist of a sturdy, perforated metal sheet and can be installed quickly and easily on the front 10" profiles. They are supplied complete with mounting material and are therefore ready for immediate use. Use the DIGITUS® 10" shelves to store components that are not mounted directly in your 10" enclosure.

- Sturdy, perforated metal sheet
- Complete with mounting material
- Attachment to the front 10" rails
- Width x depth of storage surface inside: 210 x 147 mm
- Width x depth of the entire shelf outside: 254 x 149 mm

- 2-point attachment (front 10" profile rails)

Attributes

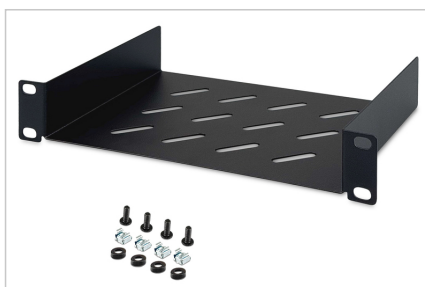
- Boja: crna, RAL 9005
- Jedinice: 1
- Kapacitet opterećenja: 25 kg
- Vrsta montaže: Fiksna montaža
- Inčni faktor oblika (IEC 60297): 254 mm (10")
- Prikladna dubina ormara: svi

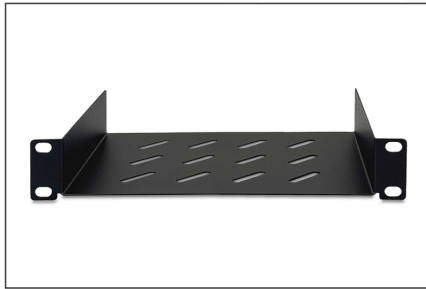
Package contents

- Installation set (screws, cage nuts, washers)

Logistics						
	Number (pcs)	Weight (kg)	Depth (cm)	Width (cm)	Height (cm)	cm ³
Packaging Unit Carton	60	27.00	59.50	50.00	51.50	153,212.00
Packaging Unit Inside	1	0.45	16.50	27.00	5.00	2,227.50
Packaging Unit Single	1	0.45	16.50	27.00	5.00	2,227.50
Net single without Packaging	0	0.37	15.00	25.40	4.40	1,676.40

More images:





Safety notes

- When installing and using the accessory product for network cabinets, observe the respective safety instructions of the manufacturer or the cabinet system in which you want to use the accessory.

EU responsible person

EU based economic operator ensuring the product complies with the required regulations.

ASSMANN Electronic GmbH
Auf dem Schüffel 3
Lüdenscheid, Germany
<https://www.assmann.com>
info@assmann.com