

# DIGITUS® 8 port Gigabit Ethernet network switch, industrial, unmanaged

DN-651108

EAN 4016032454489



## Industrial Gigabit Ethernet Switch 8-port, DIN rail, extended temp. range

The DIGITUS® Industrial Gigabit Switch is designed for harsh environments where they are exposed to humidity, temperature fluctuations and vibrations. With a temperature range of -40°C to 75°C, the Industrial Gigabit Switch can be used under the most adverse conditions. Constant availability is guaranteed in highly sensitive areas such as transportation, production, traffic and security surveillance. Thanks to the simple plug-and-play system, the Industrial Gigabit Switch can be quickly integrated into the respective environment. Gigabit connectivity makes the Industrial Gigabit Switch a flexible, cost-effective solution for industrial environments.

- 8 x 10/100/1000Base-TX Ethernet ports
- Automatic cable detection - Auto MDI / MDI-X function
- Supported standards: IEEE 802.3 10BaseT, IEEE 802.3u 100BaseTX, IEEE 802.3ab Gigabit Ethernet
- IEEE802.3x Flow Control and Back Pressure
- Store-and-forward technology for optimized data transfer
- Automatic speed and half/full duplex detection/adjustment
- Backplane with 16Gbps
- Supports up to 8K MAC addresses
- Compact, robust metal housing
- Excellent protection against short circuits
- Lightning protection and surge protection

- Redundant power supply: DC 12 - 56 V, redundant power supply with polarity reversal protection function
- Extended operating temperature range, -40 °C ~ +75 °C
- Removable terminal connection
- Power consumption: 5 W
- MTBF: 500,000 hours
- EN 50155 (EN 60068-2-6) Vibration
- EN 50155 (EN 60068-2-27) Shock
- EN 50155 (EN 60068-2-32) Free fall

### Attributes

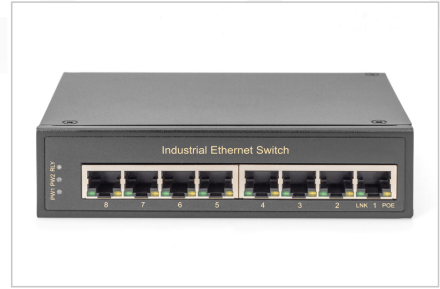
- Broj priključaka: 8
- Ethernet brzina: Gigabit
- Industrijska uporaba: Da
- PoE (napajanje preko Ethernet): Ne
- Prikladno za vanjsku primjenu: Ne
- Upravljač: Ne
- VLAN: Ne
- Vrsta instalacije: DIN tračnica
- Zaštita od vandalizma: Ne

### Package contents

- Industrial 8-port Gigabit switch
- Quick start guide

Logistics						
	Number (pcs)	Weight (kg)	Depth (cm)	Width (cm)	Height (cm)	cm <sup>3</sup>
Packaging Unit Carton	16	12.60	35.00	24.00	56.00	47.04
Packaging Unit Inside	16	12.60	35.00	24.00	56.00	47.04
Packaging Unit Single	1	0.79	16.50	6.50	21.50	2,305.88
Net single without Packaging	0	0.52	10.50	3.62	14.20	539.74

**More images:**



**Safety notes**

- This product is intended for indoor use only.
- Read all instructions and follow all warnings and instructions on the device.
- Do not place this appliance on an unstable surface (such as a trolley, stand, table, etc.).
- Do not use this appliance near water.
- Do not place this appliance near or above a radiator.
- The housing is equipped with openings for heat dissipation and ventilation. To prevent overheating during operation, the ventilation openings must not be blocked or covered.
- Do not place the appliance on a soft surface (e.g. bed, sofa, blanket, etc.). This will block the ventilation.
- The appliance must not be installed in a closed environment if adequate ventilation is not guaranteed.
- Do not spray any liquids onto the appliance.
- Disconnect the mains plug before cleaning. Do not use any liquid or foam cleaners.
- Clean the appliance with a damp cloth.
- Connect the device according to the power supply on the rating plate.
- To prevent damage to the appliance, it is important that all appliances are properly earthed.
- Do not place any objects on the power cable and lay it in such a way as to avoid tripping hazards.
- Use a surge protector, a regulator or an uninterruptible power supply (UPS) to protect your system from sudden, temporary and reduced power.
- Secure the system cable and mains cable properly and ensure that no objects are pressing on the cable.
- Do not insert any objects into the appliance through the openings in the housing. There is a risk of a short circuit, which can lead to fire or electric shock.
- Do not attempt to repair the appliance yourself. Always contact an authorized customer service centre.
- If any of the following conditions occur, unplug the appliance and send it to an authorized service centre for repair
  - The mains cable, power supply unit or plug for the power supply is damaged or worn;
  - Liquid has penetrated the appliance;
  - The device has been exposed to rain or water;
  - The device has been dropped or the housing has been damaged;
  - The function of the device has obviously changed;
- The appliance cannot be operated as described in the operating instructions.

**EU responsible person**

EU based economic operator ensuring the product complies with the required regulations.

ASSMANN Electronic GmbH  
 Auf dem Schüffel 3  
 Lüdenscheid, Germany  
<https://www.assmann.com>  
[info@assmann.com](mailto:info@assmann.com)