

DIGITUS® Extendible Shelf for fixed mounting on front 483 mm (19") profile rails

DN-19-TRAY-2-450-SW
 EAN 4016032444220



2U extendib. shelf for cabinets from 450 mm depth 88x483x352 mm, up to 30 kg, black (RAL 9005)

The shelf for fixed mounting is easy to install on the front 483 mm (19") profile rails of your 483 mm (19") network- or server cabinet. Due to its compact construction it is perfectly suitable also for 483 mm (19") wall mounting cabinets with a depth from 450 mm. The shelf is extendible via handle which makes the access easier. Due to its stable, perforated steel sheet with a load capacity of 30 kg, it is the optimal surface for components which are not 483 mm (19") suitable.

Due to its compact construction it is perfectly suitable also for 483 mm (19") wall mounting cabinets with a depth from 450 mm.

- for fixed installation on the front 483 mm (19") profile rails
- extendible, with handle

- sturdy, perforated steel sheet
- incl. fixing material
- 2-point fixing (front 19" profile rails)

Attributes

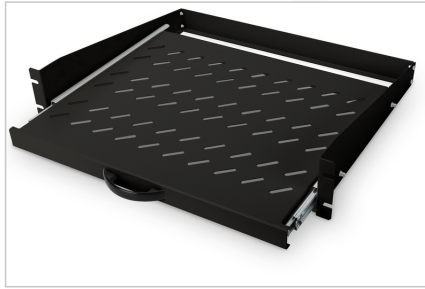
- Boja: crna, RAL 9005
- Jedinice: 2
- Kapacitet opterećenja: 30 kg
- Vrsta montaže: Proširivo
- Inčni faktor oblika (IEC 60297): 482,6 mm (19")
- Prikladna dubina ormara: 450 mm

Package contents

- Installation set (screws, cage nuts, washers)
- Handle

Logistics						
	Number (pcs)	Weight (kg)	Depth (cm)	Width (cm)	Height (cm)	cm³
Packaging Unit Carton	7	24.20	59.50	50.00	51.50	153,212.00
Packaging Unit Inside	1	3.46	42.00	49.00	9.00	18.52
Packaging Unit Single	1	3.46	42.00	49.00	9.00	18.52
Net single without Packaging	0	3.46	36.70	48.30	8.80	15,599.00

More images:



Safety notes

- When installing and using the accessory product for network cabinets, observe the respective safety instructions of the manufacturer or the cabinet system in which you want to use the accessory.

EU responsible person

EU based economic operator ensuring the product complies with the required regulations.

ASSMANN Electronic GmbH
Auf dem Schüffel 3
Lüdenscheid, Germany
<https://www.assmann.com>
info@assmann.com