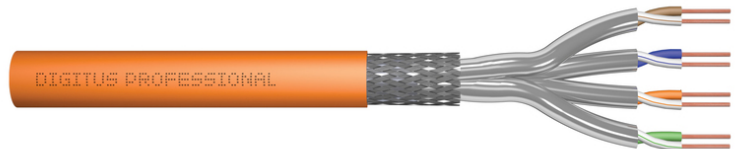


CAT 7 S/FTP data cable - installation cable, 100 m, simplex, Cca (EN 50575)

DK-1744-VH-1
EAN 4016032441717



CAT 7 S-FTP installation cable, 1200 MHz Cca (EN 50575), AWG 23/1, 100 m ring,

The Digitus Cat 7 installation cable is designed for use in structured data centers and building cabling in accordance with ISO/IEC 11801, DIN EN 50288-4-1, DIN EN 50173, IEC 61156-7, EN 50288-9-1. The cable is ideal for the transmission of analog and digital data and supports PoE, PoE+, 4PPoE (IEEE 802.3af;3at;3bt). The shield structure consists of individually shielded pairs with a tinned copper braid, which ensures excellent shielding and electrical values.

Future-oriented standards and high-end quality for your network.

- Physical properties:
- Conductor: Bare copper wire, AWG 23/1
- System(s) of assessment and verification of constancy of performance: System 3
- Insulation: SFS-PE (foamed polyethylene jacket)
- Total number of insulated conductors: 8, twisted into 4 pairs
- Color code: Blue-white, orange-white, green-white, brown-white
- Shielding of the individual pairs: aluminum-laminated polyester film, covers 100%
- Overall shielding: copper braiding
- Outer sheath: Cca acc. to EN 50575; LSZH
- Color: Orange (RAL 2008)
- Mechanical properties:
- Strain relief: 150N max.
- Dynamic bending radius: 8x AD mm min.
- Static bending radius: 4x AD mm min.
- Transport and storage temperature range: -20 °C to +60 °C
- Operating temperature range: -20 °C to +50 °C

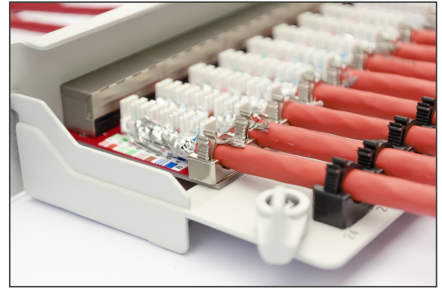
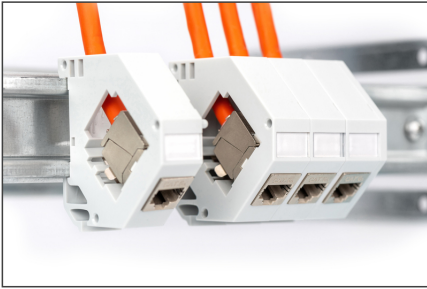
- Installation temperature range: 0 °C to +50 °C
- Electrical properties:
- Impedance: 100±15 Ohm @ 4 - 1000 MHz; 100±25 OHM @ 100-600 MHz
- Capacitance: 45 pF/m nominal @ 1 KHz
- Insulation resistance: 5 GOhm x km min.
- DC resistance: 95 Ohm/km max. (2% max. unbalanced resistance)
- Loop resistance: 190 Ohm/km max. (2% max. unbalanced resistance)
- Operating voltage: 72 Vdc max.
- Coupling attenuation: CA-Type 1b
- Phase delay: 450 nS/100 m max.
- Time delay: 10 nS/100 m max.
- Separation class: "d" according to EN 50174-2
- NVP: 79%
- Flame spread: EN EN 60332-1-2 (LSOH-PVC)
- Halogen-free, corrosiveness: EN 60754-1/2 (LSOH)
- Smoke density: EN 61034-2

Attributes

- Asortiman: Instalacijski kabeli s upredenim paricama
- Kategorija: CAT 7
- Oklop: S-FTP, oklop parova u metalnoj foliji i pletenica
- CPR: Cca
- Duljina: 100 m
- Boja: narančasti
- Kapica: LSOH
- Struktura: 4 x 2 AWG 23/1, kruto upletena parica

Logistics						
	Number (pcs)	Weight (kg)	Depth (cm)	Width (cm)	Height (cm)	cm ³
Packaging Unit Carton	1	0.00	0.00	0.00	0.00	0.00
Packaging Unit Inside	1	0.00	0.00	0.00	0.00	0.00
Packaging Unit Single	1	0.00	0.00	0.00	0.00	0.00
Net single without Packaging	0	0.00	0.00	0.00	0.00	0.00

More images:



DIGITUS

AWG 23/1 | 1200 MHz | 10 Gbit Ethernet | CAT 7 100.000m

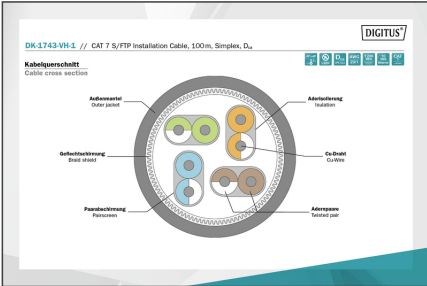
207/150 | LSZH | Dca | CPE class

CAT 7 S/FTP Installation Cable, 100m, Simplex, D_{ca}

DIGITUS

DK-1743-VH-1 // CAT 7 S/FTP Installation Cable, 100m, Simplex, D_{ca}

Anwendungsbeispiel
Example of use



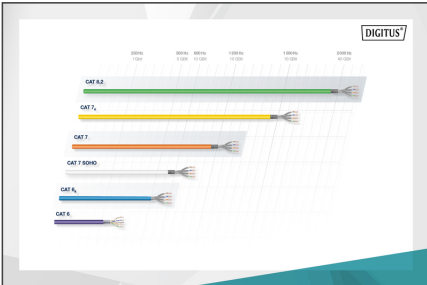
DIGITUS

Produktdaten Product Information		Physikalische Spezifikationen Physical Properties	
Produktname Product Name	DK-1743-VH-1 // CAT 7 S/FTP Installation Cable, 100m, Simplex, D _{ca}	Standard Norm Standard	ISO/IEC 11801-3 Class E, Cat 7, Class F
Produkttyp Product Type	Installation Cable	Standard Norm Standard	ISO/IEC 11801-3 Class E, Cat 7, Class F
Produktlänge Product Length	100m	Standard Norm Standard	ISO/IEC 11801-3 Class E, Cat 7, Class F
Produktfarbe Product Color	Orange	Standard Norm Standard	ISO/IEC 11801-3 Class E, Cat 7, Class F
Produktmaterial Product Material	LSZH	Standard Norm Standard	ISO/IEC 11801-3 Class E, Cat 7, Class F
Produkttyp Product Type	Installation Cable	Standard Norm Standard	ISO/IEC 11801-3 Class E, Cat 7, Class F
Produktlänge Product Length	100m	Standard Norm Standard	ISO/IEC 11801-3 Class E, Cat 7, Class F
Produktfarbe Product Color	Orange	Standard Norm Standard	ISO/IEC 11801-3 Class E, Cat 7, Class F
Produktmaterial Product Material	LSZH	Standard Norm Standard	ISO/IEC 11801-3 Class E, Cat 7, Class F
Produkttyp Product Type	Installation Cable	Standard Norm Standard	ISO/IEC 11801-3 Class E, Cat 7, Class F
Produktlänge Product Length	100m	Standard Norm Standard	ISO/IEC 11801-3 Class E, Cat 7, Class F
Produktfarbe Product Color	Orange	Standard Norm Standard	ISO/IEC 11801-3 Class E, Cat 7, Class F
Produktmaterial Product Material	LSZH	Standard Norm Standard	ISO/IEC 11801-3 Class E, Cat 7, Class F

DIGITUS

Leistungseigenschaften Transmission Properties

PROZ.	NETZ	NETZ	NETZ	NETZ	NETZ	NETZ	NETZ	NETZ
1	2	3	4	5	6	7	8	9
10	11	12	13	14	15	16	17	18
19	20	21	22	23	24	25	26	27
28	29	30	31	32	33	34	35	36
37	38	39	40	41	42	43	44	45
46	47	48	49	50	51	52	53	54
55	56	57	58	59	60	61	62	63
64	65	66	67	68	69	70	71	72
73	74	75	76	77	78	79	80	81
82	83	84	85	86	87	88	89	90
91	92	93	94	95	96	97	98	99
100	101	102	103	104	105	106	107	108
109	110	111	112	113	114	115	116	117
118	119	120	121	122	123	124	125	126
127	128	129	130	131	132	133	134	135
136	137	138	139	140	141	142	143	144
145	146	147	148	149	150	151	152	153
154	155	156	157	158	159	160	161	162
163	164	165	166	167	168	169	170	171
172	173	174	175	176	177	178	179	180
181	182	183	184	185	186	187	188	189
190	191	192	193	194	195	196	197	198
199	200	201	202	203	204	205	206	207
208	209	210	211	212	213	214	215	216
217	218	219	220	221	222	223	224	225
226	227	228	229	230	231	232	233	234
235	236	237	238	239	240	241	242	243
244	245	246	247	248	249	250	251	252
253	254	255	256	257	258	259	260	261
262	263	264	265	266	267	268	269	270
271	272	273	274	275	276	277	278	279
280	281	282	283	284	285	286	287	288
289	290	291	292	293	294	295	296	297
298	299	300	301	302	303	304	305	306
307	308	309	310	311	312	313	314	315
316	317	318	319	320	321	322	323	324
325	326	327	328	329	330	331	332	333
334	335	336	337	338	339	340	341	342
343	344	345	346	347	348	349	350	351
352	353	354	355	356	357	358	359	360
361	362	363	364	365	366	367	368	369
370	371	372	373	374	375	376	377	378
379	380	381	382	383	384	385	386	387
388	389	390	391	392	393	394	395	396
397	398	399	400	401	402	403	404	405
406	407	408	409	410	411	412	413	414
415	416	417	418	419	420	421	422	423
424	425	426	427	428	429	430	431	432
433	434	435	436	437	438	439	440	441
442	443	444	445	446	447	448	449	450
451	452	453	454	455	456	457	458	459
460	461	462	463	464	465	466	467	468
469	470	471	472	473	474	475	476	477
478	479	480	481	482	483	484	485	486
487	488	489	490	491	492	493	494	495
496	497	498	499	500	501	502	503	504
505	506	507	508	509	510	511	512	513
514	515	516	517	518	519	520	521	522
523	524	525	526	527	528	529	530	531
532	533	534	535	536	537	538	539	540
541	542	543	544	545	546	547	548	549
550	551	552	553	554	555	556	557	558
559	560	561	562	563	564	565	566	567
568	569	570	571	572	573	574	575	576
577	578	579	580	581	582	583	584	585
586	587	588	589	590	591	592	593	594
595	596	597	598	599	600	601	602	603
604	605	606	607	608	609	610	611	612
613	614	615	616	617	618	619	620	621
622	623	624	625	626	627	628	629	630
631	632	633	634	635	636	637	638	639
640	641	642	643	644	645	646	647	648
649	650	651	652	653	654	655	656	657
658	659	660	661	662	663	664	665	666
667	668	669	670	671	672	673	674	675
676	677	678	679	680	681	682	683	684
685	686	687	688	689	690	691	692	693
694	695	696	697	698	699	700	701	702
703	704	705	706	707	708	709	710	711
712	713	714	715	716	717	718	719	720
721	722	723	724	725	726	727	728	729
730	731	732	733	734	735	736	737	738
739	740	741	742	743	744	745	746	747
748	749	750	751	752	753	754	755	756
757	758	759	760	761	762	763	764	765
766	767	768	769	770	771	772	773	774
775	776	777	778	779	780	781	782	783
784	785	786	787	788	789	790	791	792
793	794	795	796	797	798	799	800	801
802	803	804	805	806	807	808	809	810
811	812	813	814	815	816	817	818	819
820	821	822	823	824	825	826	827	828
829	830	831	832	833	834	835	836	837
838	839	840	841	842	843	844	845	846
847	848	849	850	851	852	853	854	855
856	857	858	859	860	861	862	863	864
865	866	867	868	869	870	871	872	873
874	875	876	877	878	879	880	881	882
883	884	885	886	887	888	889	890	891
892	893	894	895	896	897	898	899	900



DIGITUS

CEP-Bauweise Construction

Druckausübung Pressure

Leitungsanforderungen Requirements of the conductor

Auflage an verdrillte Paare Twist of the twisted pairs

Zusammenfassung Summary

B_{2ca} | C_{ca} | D_{ca} | E_{ca}

1+ | 3

C_{ca} | s1a | d1 | a1



Safety notes

- Data cables must not be bent, stretched or twisted excessively. Sharp bends can damage the cable sheath and lead to failures or short circuits.
- Installation only by trained specialists.
- Installation only in dry rooms.
- The data cable must not be in direct contact with other electrical cables or high-voltage sources in order to avoid electromagnetic interference.