

DIGITUS® Cable Management Panel with Brush Entries for 483 mm (19") Cabinets, 1U

DN-97663

EAN 4016032441632



1U cable management panel with brush entries 4x aluminum cable rings 44x60 mm, black (RAL 9005)

The Cable Management Panel is getting fixed on the 483 mm (19") profile rails. Four cable guiding rings and three cable entries with brush allow an easy, horizontal array of patch cords. It guarantees an optimized cable management in your 483 mm (19") network- or server rack.

- for installation on the 483 mm (19") profile rails
- sturdy steel sheet
- 4x aluminum cable management ring (44x60 mm)

- 3x cable entry with brush (25x110 mm)
- incl. fixing material

Attributes

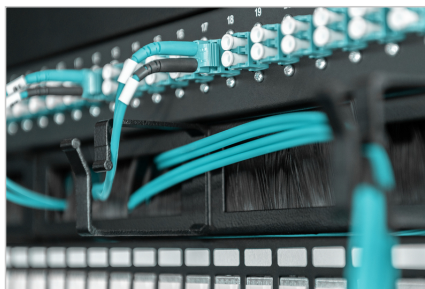
- Color: black, RAL 9005
- Units: 1
- Inch form factor (IEC 60297): 482.6 mm (19")

Package contents

- Installation set (screws, cage nuts, washers)

| Logistics | | | | | | |
|------------------------------|--------------|-------------|------------|------------|-------------|-----------------|
| | Number (pcs) | Weight (kg) | Depth (cm) | Width (cm) | Height (cm) | cm ³ |
| Packaging Unit Carton | 60 | 21.00 | 59.50 | 50.00 | 46.60 | 138.64 |
| Packaging Unit Inside | 1 | 0.35 | 0.85 | 49.00 | 0.46 | 19.16 |
| Packaging Unit Single | 1 | 0.35 | 0.85 | 49.00 | 0.46 | 19.16 |
| Net single without Packaging | 0 | 0.29 | 0.72 | 48.20 | 0.44 | 15.27 |

More images:



Safety notes

- When installing and using the accessory product for network cabinets, observe the respective safety instructions of the manufacturer or the cabinet system in which you want to use the accessory.

EU responsible person

EU based economic operator ensuring the product complies with the required regulations.

ASSMANN Electronic GmbH
Auf dem Schüffel 3
Lüdenscheid, Germany
<https://www.assmann.com>
info@assmann.com