

DIGITUS® Line-interactive UPS, 1500 VA/900 W

DN-170075

EAN 4016032441373



Line-Interactive UPS, 1500VA/900W 12V/9Ah x2 battery,4x CEE 7/7,USB,RS232,RJ45,LCD

The DIGITUS® Line-Interactive UPS systems provide uninterruptible power supply in a compact size and with excellent microprocessor control, which guarantees high reliability. Protect your office or business equipment against data loss and damage caused by faults in the power grid or power failures. The UPS devices are easy to use and offer maximum performance and security. Features such as overload, discharge and overcharge protection, a cold start function and energy-saving properties as well as an acoustic alarm system are just some of the advantages of the DIGITUS® Line-Interactive UPS systems.

Provides reliable protection against data loss and voltage damage in the office and home office

- Excellent microprocessor control guarantees high reliability in the event of a power failure
- Automatic restart while the voltage is being restored
- Cold start function
- Connection: 4x sockets with earthing contact, 2x RJ45, 1x RS232, 1x USB 2.0 type B
- Input voltage: 230 VAC
- Voltage range: 162-290 VAC
- Frequency range: 50 Hz (auto sensing)
- Output voltage: 230 VAC ± 10%
- AC regulation (battery mode): 10%
- Capacity: 1500 VA/ 900 W
- Frequency range (battery mode): 50 Hz ± 1%

- Typical transfer time: 2-6 ms
- Battery: 12V/9Ah x 2
- Typical charging time: 6-8 hours to restore 90% of capacity
- Alarm sounds: battery mode (sounds every 10 seconds), low battery status (sounds every second), overload (sounds every 0.5 seconds), error (sounds continuously)
- Humidity: 0-95% RH @ 0 °C up to +40 °C (non-condensing)
- Noise level: under 40 dB
- With overload, discharge and overcharge protection
- Buck/boost converter to stabilize the voltage
- LCD display
- Dimensions (H x W x D): 198 x 158 x 380 mm
- Weight: 10.1 kg

Attributes

- El. snaga: 1500VA – 3000VA
- Tehnologija: Linijski interaktivno
- Ugrađivanje: Radna površina
- Ugrađivanje: Radna površina
- Utičak: CEE7/7

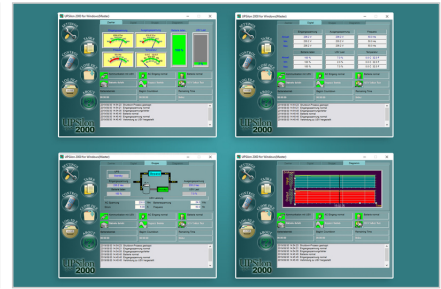
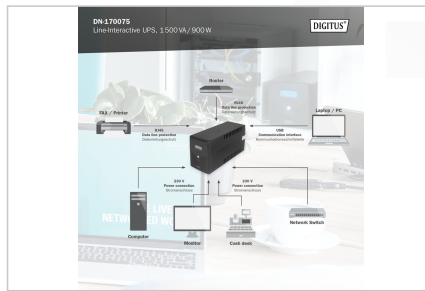
Package contents

- UPS
- QIG
- USB cable
- RS232 cable
- Mains cable (input)

Logistics

	Number (pcs)	Weight (kg)	Depth (cm)	Width (cm)	Height (cm)	cm ³
Packaging Unit Carton	1	11.00	45.20	22.20	29.50	29,601.50
Packaging Unit Inside	1	11.00	44.20	21.20	28.00	26,237.10
Packaging Unit Single	1	11.00	44.20	21.20	28.00	26,237.10
Net single without Packaging	0	10.10	38.00	15.80	19.80	11,887.90

More images:



Safety notes

- The UPS system must be absolutely dry before it is installed. Please allow the UPS system to acclimatize for at least two hours to adapt to the environment.
- Protect the UPS system from water or moisture.
- Avoid direct sunlight or installation near heat sources.
- Do not block any ventilation openings in the housing.
- Do not connect any devices or appliances that would overload the system.
- Lay cables so that nobody can step on them or trip over them.
- Do not connect any household appliances to the output sockets of the UPS system.
- Only connect the UPS system to an earthed and easily accessible socket.
- Only use VDE-tested, CE-marked mains connection cables at the input and outputs.
- Never disconnect the mains connection cable during operation as this would cancel the protective earthing of the UPS system and all connected loads.
- The UPS system has its own internal power source. The output sockets or output terminals of the UPS system can be energized even if the UPS system is not connected to the building cabling.
- To switch off the UPS system completely, first press the OFF/Enter button to disconnect the mains.
- Caution - Risk of electric shock. Even after disconnecting the device from the mains, the components inside the UPS system are still connected to the battery. There is a risk of electric shock.
- Only persons who are sufficiently familiar with batteries and the necessary safety precautions may replace batteries and monitor operation.
- Caution - Risk of electric shock. The battery circuit is not isolated from the input voltage. Dangerous voltages can occur between the battery terminals and the ground. Ensure that no voltage is present before touching!
- When replacing the batteries, install the same number and type of batteries.
- Do not open or destroy batteries. Leaking electrolyte can injure the skin and eyes and may be toxic.
- The appliance may only be opened and repaired by a trained specialist.

EU responsible person

EU based economic operator ensuring the product complies with the required regulations.

ASSMANN Electronic GmbH
 Auf dem Schüffel 3
 Lüdenscheid, Germany
<https://www.assmann.com>
info@assmann.com