

DIGITUS® Wall Mounting Cabinets - Slim

DN-19 WM-V4U-SL
EAN 4016032383253



Wall mounting cabinet, slim 800x640x220 mm, 4U vertical, color grey (RAL 7035)

The 483 mm (19") Wall Mounting Cabinet of the Sim Series allows a vertical mounting of 4U in depth. Especially space saving for networks, DVR, sound equipment, paging- and patching applications or other 483 mm (19") active components.

Slim design with mounting profiles for vertical installations inside

- 1.0 - 1.5 mm strong steel sheet
- 483 mm (19") mounting areas inside: 4U in depth
- Punched out cable entries with plastic cover on all sides (145x70 mm)
- Bottom is prepared for fan units
- Lockable front door with air ventilation slots
- Door stop is easy to change
- Packaging dimensions (HxWxD): 820x660x230 mm
- Max. equipment mounting height inside: 610 mm

Attributes

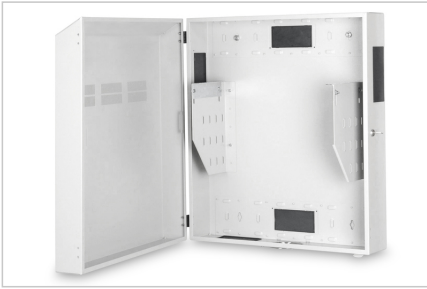
- Cabinet type: Wall mounting cabinet, home automation
- Color: light grey, RAL 7035
- Depth: 220 mm
- Front door: Steel door, closed, single opening
- Load capacity: 100 kg
- Side panels: Both sides
- Units: 4
- Width: 640 mm
- IP protection class: IP20
- Mounted: yes

Package contents

- Earthing wire set
- 2 x Keys

Logistics						
	Number (pcs)	Weight (kg)	Depth (cm)	Width (cm)	Height (cm)	cm³
Packaging Unit Carton	1	18.00	23.00	66.00	82.00	124.48
Packaging Unit Inside	1	18.00	23.00	66.00	82.00	124.48
Packaging Unit Single	1	18.00	23.00	66.00	82.00	124.48
Net single without Packaging	0	16.00	22.00	64.00	80.00	112.64

More images:



Safety notes

- Ensure adequate ventilation to prevent the installed devices from overheating.
- Network cabinets should not be overfilled and the ventilation openings must not be blocked.
- Cables should be laid neatly and organized in cable ducts or trays.
- Use surge protection devices to protect sensitive devices from power surges or lightning strikes.
- Avoid moisture or wetness while observing the respective IP protection class.
- Ensure that the cabinet and the devices used are properly earthed.
- In regions with frequent thunderstorm activity, professional lightning protection should be integrated into the power supply.
- To avoid uneven loading, always mount the heaviest units at the bottom of the cabinet.
- Disconnect the installed devices from the power supply during maintenance or installation work.

EU responsible person

EU based economic operator ensuring the product complies with the required regulations.

ASSMANN Electronic GmbH
Auf dem Schüffel 3
Lüdenscheid, Germany
<https://www.assmann.com>
info@assmann.com