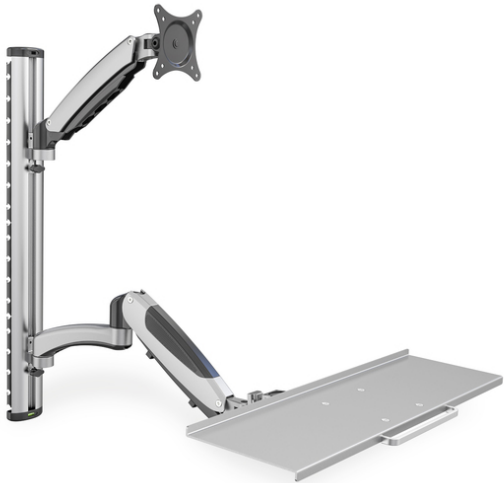


DIGITUS Workstation (monitor, keyboard, mouse) Wall Mount

DA-90354
EAN 4016032383161



Monitor & Keyboard mount for LCD/LED up to 69cm (27") flexible gas spring mount height

Universal wall mount with flexible working height adjustment for mounting monitors and keyboards. Set up a workspace that people of various different heights can use – you can easily adjust the working height with just two quick motions. Simply note the VESA size and the weight of your monitor in order to select a suitable mount.

Universal mount with flexible height adjustment for mounting monitors and keyboards to the wall

- Integrated cable routing

- Suitable for standard VESA mounting patterns of 75 x 75 and 100 x 100 mm
- Max. load bearing capacity: 6 kg per arm
- Weight: 4.2 kg
- Dimensions: 700 x 700 x 520 mm

Attributes

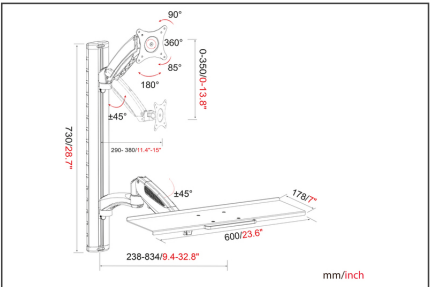
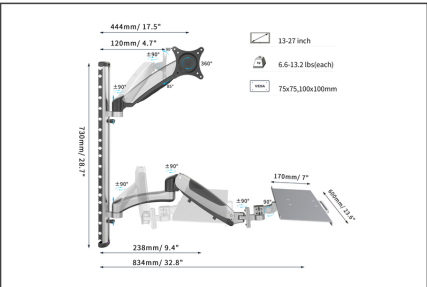
- Vrsta: PC radna stanica

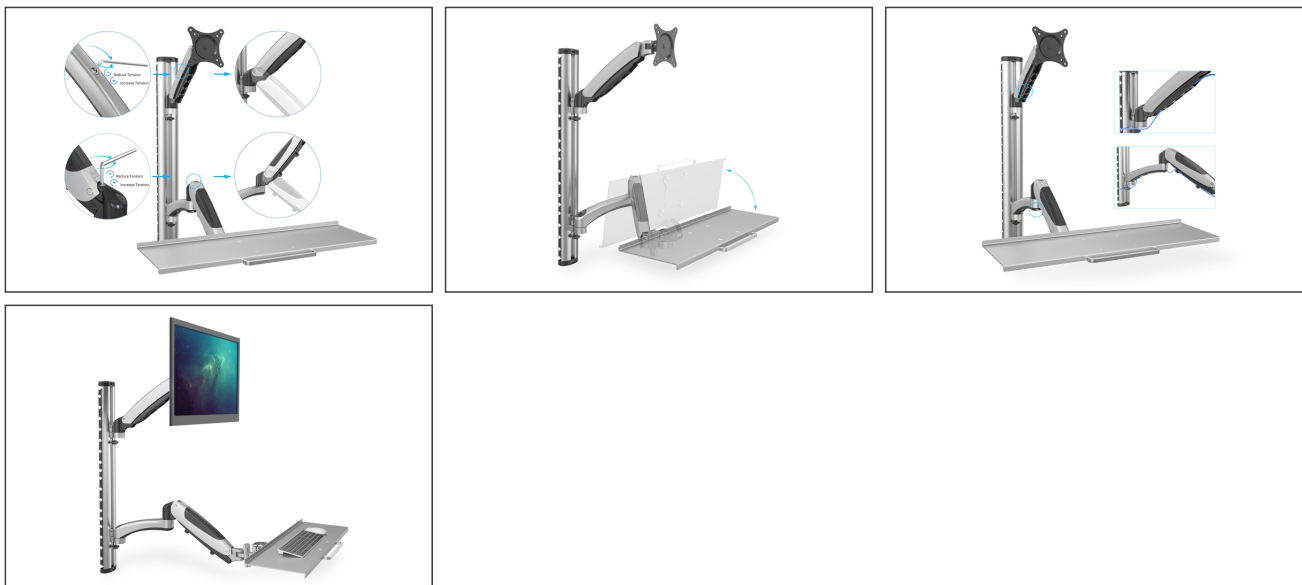
Package contents

- Wall mount
- Screws for mounting the monitor
- Operating instructions

Logistics						
	Number (pcs)	Weight (kg)	Depth (cm)	Width (cm)	Height (cm)	cm³
Packaging Unit Carton	2	12.66	78.00	25.50	23.00	45.75
Packaging Unit Inside	1	6.33	76.50	23.00	10.00	17.60
Packaging Unit Single	1	6.33	76.50	23.00	10.00	17.60
Net single without Packaging	0	4.82	83.40	73.00	60.00	365.29

More images:





Safety notes

- Please read the entire manual before starting assembly and installation. Please contact your local dealer if you have any questions about the instructions or warnings.
- CAUTION: Use with products that exceed the permitted weight may result in damage or possible injury.
- Brackets should be fitted in accordance with the installation instructions. Incorrect installation can result in damage or injury.
- Use safety equipment and suitable tools. The product should only be installed by specialists.
- The load-bearing surfaces should be able to safely withstand the entire weight of appliances and all additional components.
- Only use the installation screws supplied and DO NOT TIGHTEN the screws TOO TIGHT.
- This product contains small parts that can cause a choking hazard if swallowed. Keep these parts away from children.
- Only use this product indoors. Using the product outdoors can lead to injuries and damage.
- IMPORTANT: Before installation, please check all components received against the components list. If parts are damaged or missing, ask your local dealer for replacement parts.

EU responsible person

EU based economic operator ensuring the product complies with the required regulations.

ASSMANN Electronic GmbH
Auf dem Schöffel 3
Lüdenscheid, Germany
<https://www.assmann.com>
info@assmann.com