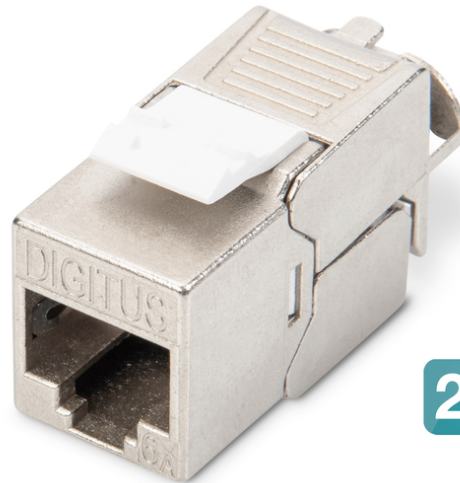


# DIGITUS® CAT 6A Keystone module, shielded, tool-free mounting connection

DN-93615-24

EAN 4016032373087



24 x

**CAT 6A Keystone Jack, shielded, Re-embedded tool free connec., set 24 pcs**

The shielded CAT 6A Keystone module set DN-93615-24 from DIGITUS® impresses with future-oriented standards and high-end quality for your network. The compact design allows 24 modules to be installed in series in a 483 mm (19") 1U panel. The tool-free installation is carried out via LSA strips, color-coded according to EIA/TIA 568 A&B. Thanks to its compact design, the module also fits into design-compatible modular junction boxes.

**Quick and easy installation without special tools**

- Category 6A 10GBase-T, 500 MHz
- ISO/IEC 11801 3rd Edition, EN 50173-1
- Suitable for IEEE 802.3 af/at/bt - PoE, PoE+ (4PPoE in permanent link)
- Suitable for distribution panel and junction box installation
- RJ45 socket, 8P8C
- Cable installation via insulation displacement connectors, color-coded according to EIA/TIA 568 A & B
- Strain relief and cable fixing using intelligent cable manager
- Tool-free mounting connection
- 360° shield contacting
- Housing material: Zinc die-cast - nickel-plated
- Contact material: Phosphor bronze

- Coating Contacts: Nickel, gold-plated 0.5 μ
- Insertion force: Max. 30N (according to IEC 60603-7-51)
- Holding force: 7.7 kg between socket and plug
- Operating temperature: -20 °C up to +70 °C (ISO/IEC 11801, ANSI/TIA 568 C.2)
- Mating cycles: 750 (ISO/IEC 11801, IEC 60603-7-51)
- In accordance with IEC 60512-5, IEC 60512-6-5
- Copper conductor diameter: AWG (26/7 - 22/1), stranded and solid wire
- Tested with AWG 22/1 solid installation cable
- (DIGITUS® DK-T74X-A-VH-X; AWG 22/1 Cat.7A installation cable)
- Dielectric strength: 1000 VDC (contact/contact), 1500 VDC (contact/ground)
- Tool-free installation using LSA insulation displacement connectors, color-coded in accordance with EIA/TIA 568 A & B
- Intelligent cable manager (reclosable)
- CAT 6A Keystone module, shielded, set= 24 pieces
- Dimensions (HxWxD): 21.0 x 14.5 x 34.5 mm
- Weight: 19.5 g

**Attributes**

- Weight: 22 g
- Category: CAT 6A

Logistics						
	Number (pcs)	Weight (kg)	Depth (cm)	Width (cm)	Height (cm)	cm³
Packaging Unit Carton	36	22.50	53.00	32.00	22.00	37.31
Packaging Unit Inside	1	0.63	7.50	16.00	6.50	780.00
Packaging Unit Single	1	0.63	7.50	16.00	6.50	780.00
Net single without Packaging	0	0.00	0.00	0.00	0.00	0.00



