

# DIGITUS® Keystone housing for top-hat rail mounting, IP20

AN-25186

EAN 4016032372981



### DIN-Rail adapter for 1x Keystone Modules, IP20 labeling field, earthing spring, side cover

The Keystone module is mounted in the housing on the top-hat rail. The distance between the top-hat rail and the wall should be around 10 mm. Up to 12 modules can be installed in series in the distribution box. The IP20 degree of protection is only guaranteed if the housing is installed with covers. The delivery does not include the Keystone module.

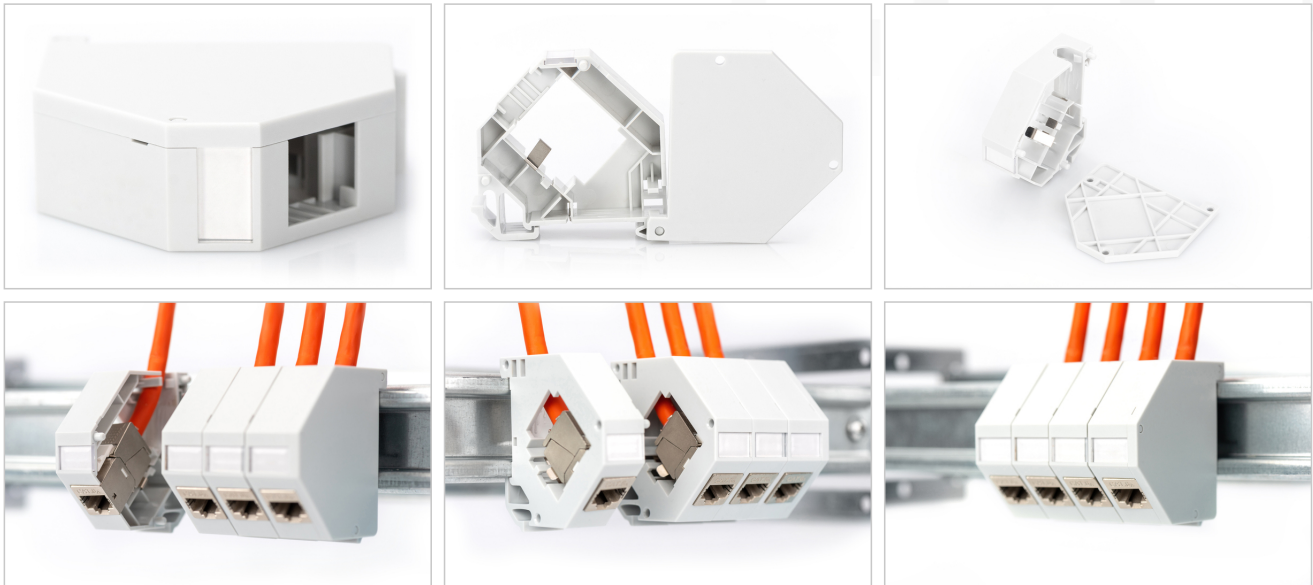
### Quick installation and high functionality for every control cabinet

- Keystone mount version: 45° angled outlet
- Areas of application: Electrical distribution boxes
- Standards: ISO/IEC 11801 3rd Ed., EN 50173-1, EIA/TIA 568-C

- General properties:
- Suitable for installation on the top-hat rail in electrical distribution boxes
- Integrated dust protection flap
- Side cover caps included in the scope of delivery
- Protection class IP20
- Technical features:
- Housing material: ABS UL-94V-0
- Physical properties:
- Operating temperature: -20° C to +70 °C (ISO/IEC 11801, EN 50173-1, ANSI/TIA/EIA 568 C)

Logistics						
	Number (pcs)	Weight (kg)	Depth (cm)	Width (cm)	Height (cm)	cm³
Packaging Unit Carton	300	8.40	50.00	37.00	28.00	51.80
Packaging Unit Inside	1	0.03	7.00	7.00	2.00	98.00
Packaging Unit Single	1	0.03	7.00	7.00	2.00	98.00
Net single without Packaging	0	0.00	0.00	0.00	0.00	0.00

**More images:**



**Safety notes**

- Protect product from moisture
- Avoid antistatic charging when installing the product
- Observe the specifications of the raw cable manufacturer during installation

**EU responsible person**

EU based economic operator ensuring the product complies with the required regulations.

ASSMANN Electronic GmbH  
Auf dem Schüffel 3  
Lüdenscheid, Germany  
<https://www.assmann.com>  
[info@assmann.com](mailto:info@assmann.com)