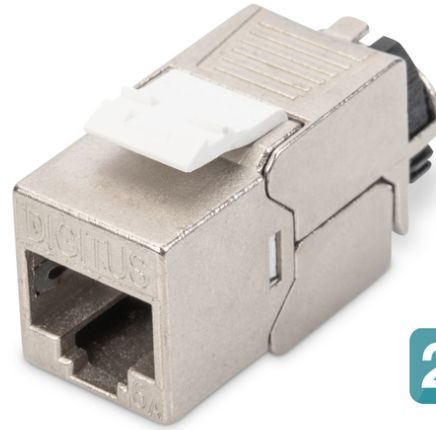


DIGITUS® CAT 6A Keystone module, shielded with intelligent cable manager, set (24 pieces)

DN-93617-24

EAN 4016032365860



24 x

CAT 6A Keystone Jack, shielded tool free connec., set 24 pcs

The shielded CAT 6A keystone module set DN-93617-24 from DIGITUS® impresses with future-oriented standards and high-end quality for your network. The modules have 360° shield contacting, a locking lever and a reclosable, intelligent cable manager for strain relief and cable fixing. The compact design allows for row installation in 483 mm (19") 1U panels. The tool-free installation is carried out via LSA strips, color-coded in accordance with EIA/TIA 568 A&B. Thanks to its compact design, the module also fits into design-compatible modular junction boxes.

Design-capable, shielded, tool-free and intelligent cable manager

- Category 6A 10GBase-T, 500 MHz
- ISO/IEC 11801 3rd Edition, EN 50173-1
- Suitable for IEEE 802.3 af/at/bt - PoE, PoE+ (4PPoE in permanent link)
- Suitable for distribution panel and junction box installation
- RJ45 socket, 8P8C
- Cable installation via insulation displacement connectors, color-coded according to EIA/TIA 568 A & B
- Strain relief and cable fixing using intelligent cable manager
- Tool-free mounting connection
- 360° shield contacting
- Housing material: Zinc die-cast - nickel-plated
- Contact material: Phosphor bronze

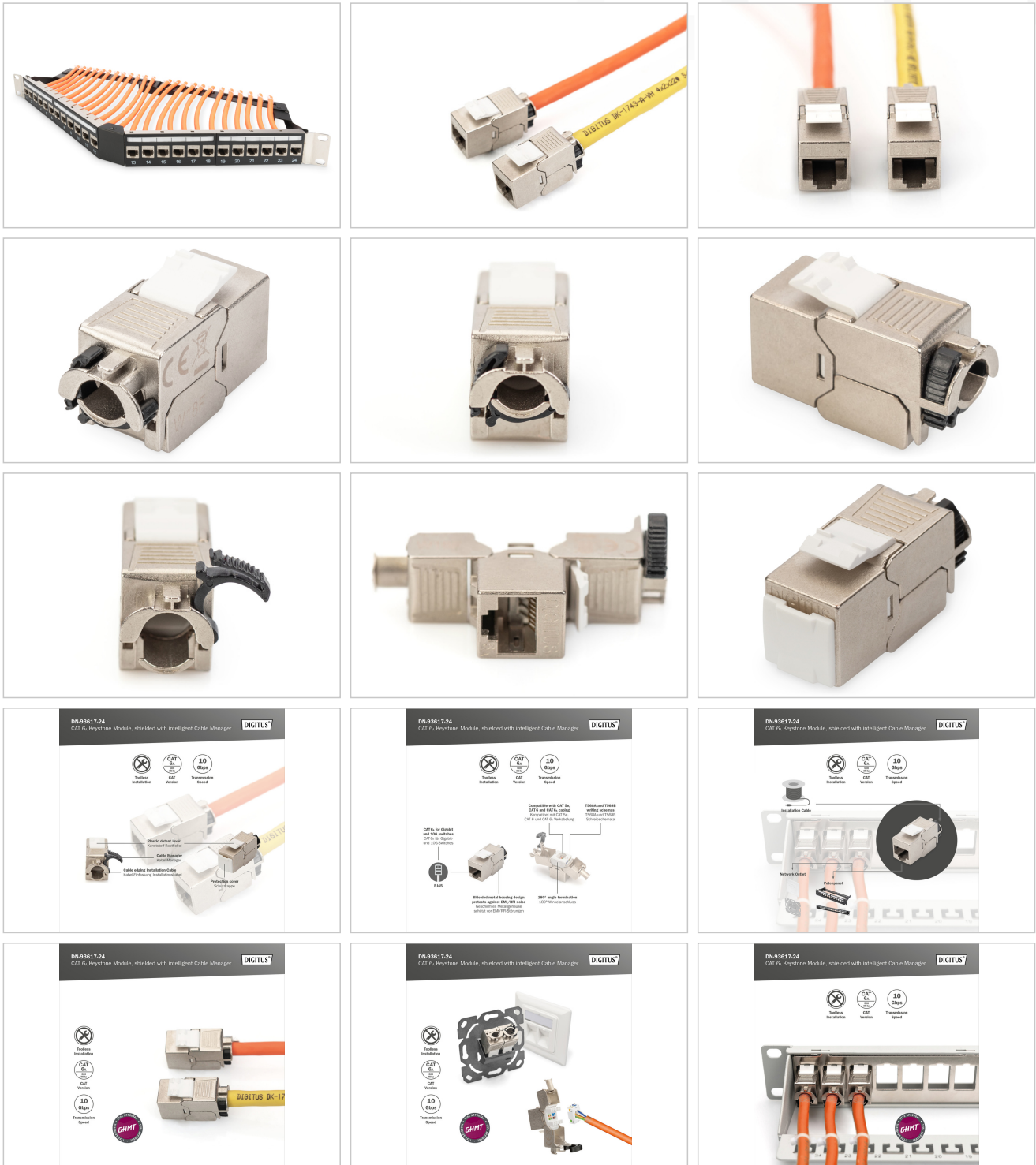
- Coating Contacts: Nickel, gold-plated 0.5 μ
- Insertion force: Max. 30N (according to IEC 60603-7-51)
- Holding force: 7.7 kg between socket and plug
- Operating temperature: -20 °C up to +70 °C (ISO/IEC 11801, ANSI/TIA 568 C.2)
- Mating cycles: 750 (ISO/IEC 11801, IEC 60603-7-51)
- In accordance with IEC 60512-5, IEC 60512-6-5
- Copper conductor diameter: AWG (26/7 - 22/1), stranded and solid wire
- Tested with AWG 22/1 solid installation cable
- (DIGITUS® DK-174X-A-VH-X; AWG 22/1 Cat.7A installation cable)
- Dielectric strength: 1000 VDC (contact/contact), 1500 VDC (contact/ground)
- Tool-free installation using LSA insulation displacement connectors, color-coded in accordance with EIA/TIA 568 A & B
- Intelligent cable manager (reclosable)
- CAT 6A Keystone module, shielded, set= 24 pieces
- Dimensions (HxWxD): 21.0 x 14.5 x 34.5 mm
- Weight: 19.5 g

Attributes

- Kategorija: CAT 6A

Logistics						
	Number (pcs)	Weight (kg)	Depth (cm)	Width (cm)	Height (cm)	cm³
Packaging Unit Carton	36	22.50	23.40	53.50	31.30	39,184.50
Packaging Unit Inside	1	0.63	7.50	16.50	6.50	804.38
Packaging Unit Single	1	0.63	3.10	1.50	2.10	9.77
Net single without Packaging	0	0.21	0.00	0.00	0.00	0.00

More images:



DN-93617-24
CAT 6 Keystone Module, shielded with Intelligent Cable Manager

Shielded
 CAT 6
 10 Gbps
 RJ45

Plastic cover cap
 Cable Manager
 Cable clamping mechanism
 Protective cover

DN-93617-24
CAT 6 Keystone Module, shielded with Intelligent Cable Manager

Shielded
 CAT 6
 10 Gbps
 RJ45

Compatible with CAT 6e, CAT 6 and CAT 5e patch cables
 Available in CAT 6e, CAT 6 and CAT 5e configurations

100% metal housing design
 protects against EMI, RF noise
 Durable metal housing
 180° angle installation
 100% compatibility
 with all CAT 6 patch cables

DN-93617-24
CAT 6 Keystone Module, shielded with Intelligent Cable Manager

Shielded
 CAT 6
 10 Gbps
 RJ45

Network patch
 Patch panel

DN-93617-24
CAT 6 Keystone Module, shielded with Intelligent Cable Manager

Shielded
 CAT 6
 10 Gbps
 RJ45

GHMT

DN-93617-24
CAT 6 Keystone Module, shielded with Intelligent Cable Manager

Shielded
 CAT 6
 10 Gbps
 RJ45

GHMT

DN-93617-24
CAT 6 Keystone Module, shielded with Intelligent Cable Manager

Shielded
 CAT 6
 10 Gbps
 RJ45

GHMT



Safety notes

- Protect product from moisture
- Avoid antistatic charging when installing the product
- Observe the specifications of the raw cable manufacturer during installation

EU responsible person

EU based economic operator ensuring the product complies with the required regulations.

ASSMANN Electronic GmbH
Auf dem Schüffel 3
Lüdenscheid, Germany
<https://www.assmann.com>
info@assmann.com