

DIGITUS® LED light

DN-19 LIGHT-3
EAN 4016032361053



LED lighting with IR sensors, 3W, 300 mm including power adapter, with magnetic strip

The LED light can be used flexibly thanks to its compact design and magnetic attachment. It can be used horizontally or vertically in your 483 mm (19") housing and provides optimum lighting using powerful LED lights, which provide maximum luminosity immediately without a warm-up phase. The two different modes (adjustable via a switch) offer particularly user-friendly handling. The automatic door mode ensures that the LED cabinet lighting is automatically switched on by your front-mounted sensor as soon as you open the door of your 483 mm (19") enclosure and switches off again as soon as you close it. Alternatively, the touch mode can be used for manual switching on and off. In this case, simply wave once in front of the sensor to switch it on and once again to switch it off. The power adapter is included in the scope of delivery, so the DIGITUS® LED light can be used immediately.

The perfect light source in your housing. Can be installed horizontally or vertically via magnetic attachment.

- Nominal input voltage: 100-240 V
- Input frequency: 50/60 Hz
- Operating voltage: DC 12 V, 1000 mA
- Power: 3 W
- Control: IR sensor
- Detection range of the infrared sensor: 4-5 cm

- Power adapter plug: CEE 7/16 (type C) Euro plug
- LED DC input plug: 3.5 mm; 1.5 m length
- Maximum total current consumption: 250 mA @ 220-240 V
- Lum. Flow: 233 lm
- Light source: 6500K LED
- Consumption in kWh/1000 h: 0.003 kwh
- Service life in hours: 20000
- Elevation (above MSL) of the operating memory: 0-3000 m / 0-15 000 m
- Storage/operating temperature: -25 °C to +65 °C / -20 °C to +45 °C
- Operating memory humidity: 0-95 % RH Non-condensing 0-95 % RH Non-condensing
- Aluminum housing
- Color: black plastic & grey aluminum
- CE & ROHS compliant
- Time to 60% of max. luminosity: <1 sec.

Attributes

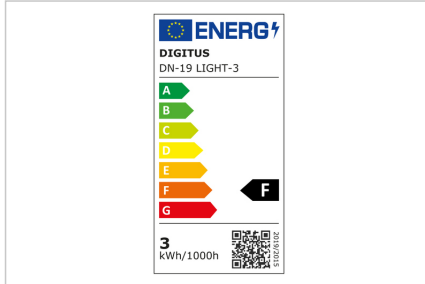
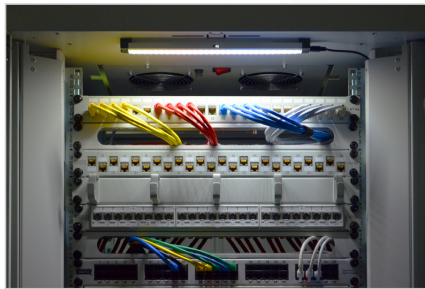
- Inčni faktor oblika (IEC 60297): 482,6 mm (19")

Package contents

- LED light
- Power adapter
- Magnetic strip

Logistics						
	Number (pcs)	Weight (kg)	Depth (cm)	Width (cm)	Height (cm)	cm³
Packaging Unit Carton	20	7.00	34.00	32.00	24.00	26.11
Packaging Unit Inside	1	0.35	8.00	30.40	5.00	1.22
Packaging Unit Single	1	0.35	2.80	30.40	1.60	136.19
Net single without Packaging	0	0.25	2.80	30.40	1.60	136.19

More images:



Safety notes

- When installing and using the accessory product for network cabinets, observe the respective safety instructions of the manufacturer or the cabinet system in which you want to use the accessory.

EU responsible person

EU based economic operator ensuring the product complies with the required regulations.

ASSMANN Electronic GmbH
Auf dem Schüffel 3
Lüdenscheid, Germany
<https://www.assmann.com>
info@assmann.com