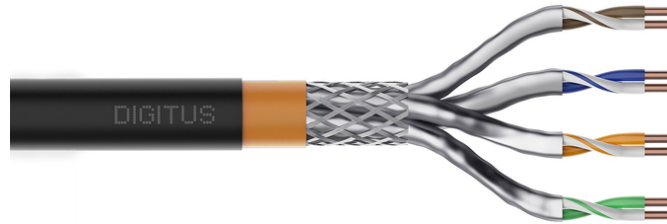


# DIGITUS® CAT 7 S/FTP data cable - underground installation cable, 1000 m, simplex, PE

DK-1741-VH-10-OD  
EAN 4016032354130



## CAT 7 S-FTP outdoor installation cable, 1200 MHz PE, inner Eca (LSZH), AWG 23/1, 1000m, Sx, bl&pu

The Digitus® Professional Cat.7 S/FTP underground cable is characterized by the following cable structure 4x2x AWG23/1 and achieves a transmission frequency of up to 1200 MHz. The cable has a PE outer sheath and a halogen-free inner sheath and conforms to the IEC 60332-1, FRNC-B, LSZH-1 and BauPVO Euroclass Eca standards. The cable is suitable for installations in dry or damp rooms, outdoors or in the ground. Conforms to the standards ISO/IEC 11801, DIN EN 50173, DIN EN 50288-4-1.

### Future-oriented standards and high-end quality for your network.

- Physical properties:
- Conductor: Bare copper wire, AWG 23/1
- Insulation: SFS-PE (foamed polyethylene jacket)
- Total number of insulated conductors: 8, twisted into 4 pairs
- Color code: Blue-white, orange-white, green-white, brown-white
- Shielding of the individual pairs: Aluminum-laminated polyester film, covers 100%
- Overall shielding: copper braiding
- Outer sheath: PE (polyethylene); UV-resistant
- Outer sheath thickness (nominal): 0.50 mm nominal
- Outer casing color: Black (RAL 9005)
- Mechanical properties:
- Strain relief: 150N max.
- Dynamic bending radius: 8x AD mm min.
- Static bending radius: 4x AD mm min.

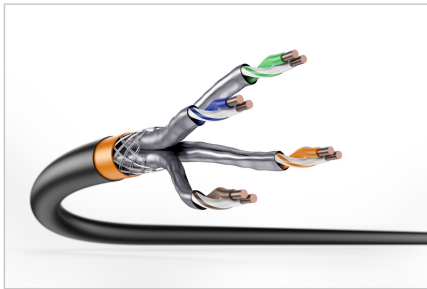
- Transport and storage temperature range: -20 °C to +60 °C
- Operating temperature range: -50 °C to +60 °C
- Installation temperature range: 0 °C to +60 °C
- Outer diameter simplex (nominal): 8.5 mm (Eca)
- Weight (kg/km): 66.5 kg/km
- Electrical properties:
- Impedance: 100±5 Ohm @ 4-100 MHz; 100±25 Ohm @ 100-1200 MHz
- Capacitance: 45 pF/m nominal @ 1 KHz
- Capacitance unbalance (pair-earth): 1.6 pF/m max. @ 1 KHz
- Insulation resistance: 5 GOhm x km min.
- DC resistance: 95 Ohm/km max. (2% max. unbalanced resistance)
- Loop resistance: 190 Ohm/km max. (2% max. unbalanced resistance)
- Operating voltage: 72 Vdc max.
- Coupling attenuation: CA-Type 1b
- Phase delay: 450 nS/100 m max.
- Time delay: 10 nS/100 m max.
- Separation class: "d" according to EN 50174-2
- NVP: 79%

### Attributes

- Assortment: Twisted Pair Installation Cables
- Category: CAT 7
- Shielding: S-FTP, pairs in metal foil and braid shielding
- CPR: Eca
- Length: 1000 m
- Color: black
- Jacket: PE
- Structure: 4 x 2 AWG 23/1, solid twisted pair

Logistics						
	Number (pcs)	Weight (kg)	Depth (cm)	Width (cm)	Height (cm)	cm³
Packaging Unit Carton	1	66.00	60.00	60.00	33.00	118.80
Packaging Unit Inside	1	66.00	60.00	60.00	33.00	118.80
Packaging Unit Single	1	66.00	60.00	60.00	33.00	118.80
Net single without Packaging	0	66.00	0.00	0.00	0.00	0.00

More images:



**DIGITUS**

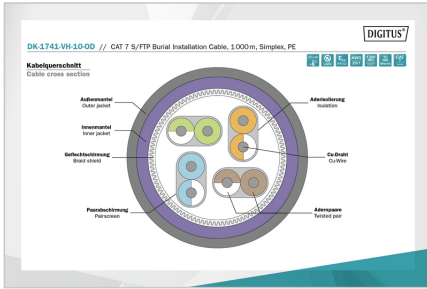
AWG 23/1 | 1200 MHz | 10 Gbit Ethernet | CAT 7 | 50°/±60° | LSZH | E Cca GPR class

**CAT 7 S/FTP Burial Installation Cable, 1 000 m, Simplex, PE**

**DIGITUS**

DK-1741-VH-10-0D // CAT 7 S/FTP Burial Installation Cable, 1.000m, Simplex, PE

Anwendungsbeispiel  
Example of use



**DIGITUS**

Technische Eigenschaften Physical Properties		Mechanische Eigenschaften Mechanical Properties	
Bezeichnung Designation	DK-1741-VH-10-0D	Bezeichnung Designation	DK-1741-VH-10-0D
Hersteller Manufacturer	ASSMANN Electronic GmbH	Hersteller Manufacturer	ASSMANN Electronic GmbH
Material Material	PE	Material Material	PE
Farbe Color	Black	Farbe Color	Black
Abmessungen Dimensions	1000m	Abmessungen Dimensions	1000m
Wegung Tolerance	±0.5mm	Wegung Tolerance	±0.5mm
Temperaturbereich Temperature range	-20°C to +70°C	Temperaturbereich Temperature range	-20°C to +70°C
Flammverhalten Flame retardancy	LSZH	Flammverhalten Flame retardancy	LSZH
Umweltverträglichkeit Environmental compatibility	RoHS	Umweltverträglichkeit Environmental compatibility	RoHS
CE-Kennzeichnung CE marking	CE	CE-Kennzeichnung CE marking	CE
RoHS-Kennzeichnung RoHS marking	RoHS	RoHS-Kennzeichnung RoHS marking	RoHS
REACH-Kennzeichnung REACH marking	REACH	REACH-Kennzeichnung REACH marking	REACH
WEEE-Kennzeichnung WEEE marking	WEEE	WEEE-Kennzeichnung WEEE marking	WEEE
CE-Kennzeichnung CE marking	CE	CE-Kennzeichnung CE marking	CE
RoHS-Kennzeichnung RoHS marking	RoHS	RoHS-Kennzeichnung RoHS marking	RoHS
REACH-Kennzeichnung REACH marking	REACH	REACH-Kennzeichnung REACH marking	REACH
WEEE-Kennzeichnung WEEE marking	WEEE	WEEE-Kennzeichnung WEEE marking	WEEE

**DIGITUS**

DK-1741-VH-10-0D // CAT 7 S/FTP Burial Installation Cable, 1.000m, Simplex, PE

Technische Eigenschaften Physical Properties

Parameter	Value
Bezeichnung Designation	DK-1741-VH-10-0D
Hersteller Manufacturer	ASSMANN Electronic GmbH
Material Material	PE
Farbe Color	Black
Abmessungen Dimensions	1000m
Wegung Tolerance	±0.5mm
Temperaturbereich Temperature range	-20°C to +70°C
Flammverhalten Flame retardancy	LSZH
Umweltverträglichkeit Environmental compatibility	RoHS
CE-Kennzeichnung CE marking	CE
RoHS-Kennzeichnung RoHS marking	RoHS
REACH-Kennzeichnung REACH marking	REACH
WEEE-Kennzeichnung WEEE marking	WEEE

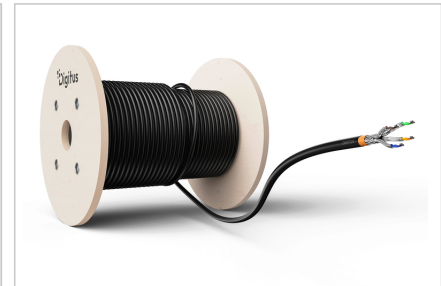
Leistungseigenschaften Transmission Properties

Parameter	Value
Bezeichnung Designation	DK-1741-VH-10-0D
Hersteller Manufacturer	ASSMANN Electronic GmbH
Material Material	PE
Farbe Color	Black
Abmessungen Dimensions	1000m
Wegung Tolerance	±0.5mm
Temperaturbereich Temperature range	-20°C to +70°C
Flammverhalten Flame retardancy	LSZH
Umweltverträglichkeit Environmental compatibility	RoHS
CE-Kennzeichnung CE marking	CE
RoHS-Kennzeichnung RoHS marking	RoHS
REACH-Kennzeichnung REACH marking	REACH
WEEE-Kennzeichnung WEEE marking	WEEE



**DIGITUS**

Parameter	Value
CE-Kennzeichnung CE marking	CE
RoHS-Kennzeichnung RoHS marking	RoHS
REACH-Kennzeichnung REACH marking	REACH
WEEE-Kennzeichnung WEEE marking	WEEE
CE-Kennzeichnung CE marking	CE
RoHS-Kennzeichnung RoHS marking	RoHS
REACH-Kennzeichnung REACH marking	REACH
WEEE-Kennzeichnung WEEE marking	WEEE



**Safety notes**

- Data cables must not be bent, stretched or twisted excessively. Sharp bends can damage the cable sheath and lead to failures or short circuits.
- Installation only by trained specialists.
- Installation only in dry rooms.
- The data cable must not be in direct contact with other electrical cables or high-voltage sources in order to avoid electromagnetic interference.

**EU responsible person**

EU based economic operator ensuring the product complies with the required regulations.

ASSMANN Electronic GmbH  
 Auf dem Schüffel 3  
 Lüdenscheid, Germany  
<https://www.assmann.com>  
 info@assmann.com