

DIGITUS® Wall-mounted enclosure - SOHO, Slim

DN-19 04U-PB-B

EAN 4016032345282



Wall mounting cabinet, SOHO, slim, 156x525x475 mm 3U rotatable, 2U fix, color black (RAL 9005)

The SOHO, Slim wall-mounted enclosures are ideal for housing active and passive components. They are characterized by simple and time-saving installation. The modern design fits into any office or home. The enclosure has 2 separate installation options: A rotatable vertical 3U rail is attached to the front. Alternatively, this can also be positioned horizontally or at an angle. A horizontal 2U rail is attached to the rear (fixed), which can be used for passive network components, for example. The punched-out mounting holes in the entire lower housing area also allow components that are not 483 mm (19") compatible to be installed (e.g. DSL routers, etc.).

DIGITUS® wall-mounted enclosures are manufactured, designed and developed to meet the high demands of IT infrastructure.

- Protection class IP20
- Lockable housing with transparent polycarbonate pane
- Upper part of the housing can be opened up to 80°
- Steel door stop mechanism keeps the door open
- 1-point four-point locking
- 2 separate 483 mm (19") installation options: 3U vertical (rotatable), 2U horizontal (fixed)
- Max. installation depth (from front vertical rail to stop on rear horizontal rail): Approx. 265 mm
- Max. installation depth (from front vertical rail to rear wall stop): Approx. 355 mm

- 2.0 mm thick sheet steel with a high load-bearing capacity, powder-coated
- Pre-punched cut-outs for cable routing
- Ventilation slots for active and passive ventilation
- Area for cable ties
- Lower housing area with punched-out mounting holes for mounting equipment that is not 483 mm (19") compatible
- Mounting plate is optionally available
- Fan mount dimensions: 57.5 x 57.5 mm
- Hole spacing for fan mounting: 50 x 50 mm (3.5 mm diameter)

Attributes

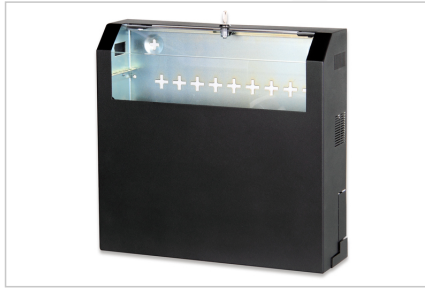
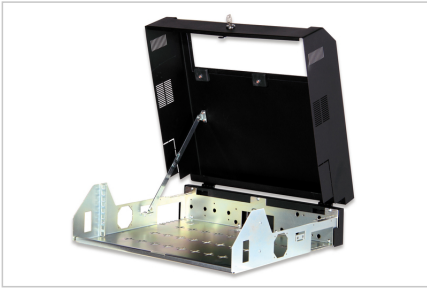
- Bočne ploče: Objе strane
- Boja: crna, RAL 9005
- Dubina: 475 mm
- Jedinice: 5
- Kapacitet opterećenja: 30 kg
- Prednja vrata: Staklena vrata, jednostruko otvaranje
- Širina: 525 mm
- Vrsta ormara: Zidni ormarić, kućna automatika
- IP klasa zaštite: IP20
- Montirano: Da

Package contents

- 2 x key

Logistics						
	Number (pcs)	Weight (kg)	Depth (cm)	Width (cm)	Height (cm)	cm³
Packaging Unit Carton	1	9.50	50.00	53.00	16.00	42.40
Packaging Unit Inside	1	9.50	50.00	53.00	16.00	42.40
Packaging Unit Single	1	9.50	50.00	53.00	16.00	42.40
Net single without Packaging	0	8.50	47.50	52.50	15.60	38,902.50

More images:



Safety notes

- Ensure adequate ventilation to prevent the installed devices from overheating.
- Network cabinets should not be overfilled and the ventilation openings must not be blocked.
- Cables should be laid neatly and organized in cable ducts or trays.
- Use surge protection devices to protect sensitive devices from power surges or lightning strikes.
- Avoid moisture or wetness while observing the respective IP protection class.
- Ensure that the cabinet and the devices used are properly earthed.
- In regions with frequent thunderstorm activity, professional lightning protection should be integrated into the power supply.
- To avoid uneven loading, always mount the heaviest units at the bottom of the cabinet.
- Disconnect the installed devices from the power supply during maintenance or installation work.

EU responsible person

EU based economic operator ensuring the product complies with the required regulations.

ASSMANN Electronic GmbH
Auf dem Schüffel 3
Lüdenscheid, Germany
<https://www.assmann.com>
info@assmann.com