

# DIGITUS® Wall-mounted enclosure - SOHO, Slim

DN-19 04U-PB-B

EAN 4016032345282



**Wall mounting cabinet, SOHO, slim, 156x525x475 mm 3U rotatable, 2U fix, color black (RAL 9005)**

The SOHO, Slim wall-mounted enclosures are ideal for housing active and passive components. They are characterized by simple and time-saving installation. The modern design fits into any office or home. The enclosure has 2 separate installation options: A rotatable vertical 3U rail is attached to the front. Alternatively, this can also be positioned horizontally or at an angle. A horizontal 2U rail is attached to the rear (fixed), which can be used for passive network components, for example. The punched-out mounting holes in the entire lower housing area also allow components that are not 483 mm (19") compatible to be installed (e.g. DSL routers, etc.).

**DIGITUS® wall-mounted enclosures are manufactured, designed and developed to meet the high demands of IT infrastructure.**

- Protection class IP20
- Lockable housing with transparent polycarbonate pane
- Upper part of the housing can be opened up to 80°
- Steel door stop mechanism keeps the door open
- 1-point four-point locking
- 2 separate 483 mm (19") installation options: 3U vertical (rotatable), 2U horizontal (fixed)
- Max. installation depth (from front vertical rail to stop on rear horizontal rail): Approx. 265 mm
- Max. installation depth (from front vertical rail to rear wall stop): Approx. 355 mm

- 2.0 mm thick sheet steel with a high load-bearing capacity, powder-coated
- Pre-punched cut-outs for cable routing
- Ventilation slots for active and passive ventilation
- Area for cable ties
- Lower housing area with punched-out mounting holes for mounting equipment that is not 483 mm (19") compatible
- Mounting plate is optionally available
- Fan mount dimensions: 57.5 x 57.5 mm
- Hole spacing for fan mounting: 50 x 50 mm (3.5 mm diameter)

**Attributes**

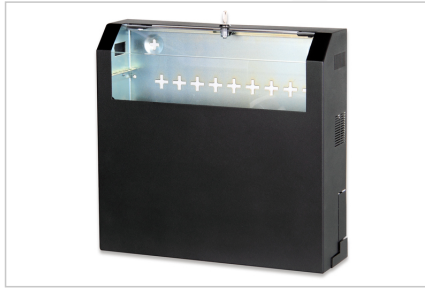
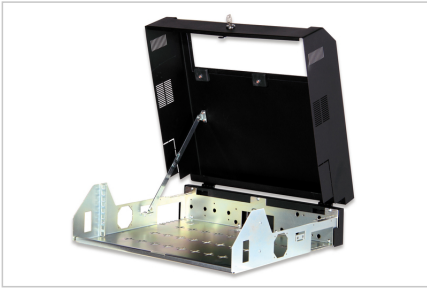
- Cabinet type: Wall mounting cabinet, home automation
- Color: black, RAL 9005
- Depth: 475 mm
- Front door: Glass door, single opening
- Load capacity: 30 kg
- Side panels: Both sides
- Units: 5
- Width: 525 mm
- IP protection class: IP20
- Mounted: yes

**Package contents**

- 2 x key

Logistics						
	Number (pcs)	Weight (kg)	Depth (cm)	Width (cm)	Height (cm)	cm³
Packaging Unit Carton	1	9.50	50.00	53.00	16.00	42.40
Packaging Unit Inside	1	9.50	50.00	53.00	16.00	42.40
Packaging Unit Single	1	9.50	50.00	53.00	16.00	42.40
Net single without Packaging	0	8.50	47.50	52.50	15.60	38,902.50

**More images:**



**Safety notes**

- Ensure adequate ventilation to prevent the installed devices from overheating.
- Network cabinets should not be overfilled and the ventilation openings must not be blocked.
- Cables should be laid neatly and organized in cable ducts or trays.
- Use surge protection devices to protect sensitive devices from power surges or lightning strikes.
- Avoid moisture or wetness while observing the respective IP protection class.
- Ensure that the cabinet and the devices used are properly earthed.
- In regions with frequent thunderstorm activity, professional lightning protection should be integrated into the power supply.
- To avoid uneven loading, always mount the heaviest units at the bottom of the cabinet.
- Disconnect the installed devices from the power supply during maintenance or installation work.

**EU responsible person**

EU based economic operator ensuring the product complies with the required regulations.

ASSMANN Electronic GmbH  
Auf dem Schüffel 3  
Lüdenscheid, Germany  
<https://www.assmann.com>  
[info@assmann.com](mailto:info@assmann.com)