

DIGITUS® Desktop CAT 6A, class EA patch panel, shielded, black

DN-91612SD-EA

EAN 4016032315063



Desktop CAT 6A Patch Panel, shielded Class EA, 12-port RJ45, 8P8C, LSA

The Desktop Patch Panels from DIGITUS® are the ideal solution for SoHo applications (Smart Office Home Office) The fully shielded RJ45 sockets offer optimum support for your cables with the best performance.

Use in SOHO applications

- Transmission characteristics: Category 6A, class EA
- Application areas: Up to 500 MHz, 10GBase-T
- Standards: ISO/IEC 11801 2nd Ed., EN 50173-1, EIA/TIA 568-C, 802.3af, 802.3at PoE+
- General properties:
- Suitable for surface-mounted installations
- RJ45 sockets, 8P8C
- Cable installation via LSA strips, color-coded according to EIA/TIA 568 A & B
- Cable fixing by means of quick latches
- Central earthing connection
- 360° shield contacting
- Mechanical properties:
- Housing material: 1.5 mm galvanized, cold-rolled steel according to EN1.4301, UNS S30400, AISI 304 and LMSAD110
- RJ45 socket material: ABS UL 94V-0
- Contact RJ45 socket: Nickel-plated phosphor bronze, 0.5 mm gold-plated contact
- RJ-45 shielding: Nickel-plated bronze

- LSA cutting clamp: Krone LSA+, UL 94V-2, galvanized phosphor bronze
- Earthing wire: Not included in the scope of delivery
- Printed circuit board: FR4, UL 94V-0
- Physical properties:
- Insertion force: 30N max. (IEC 60603-7-5)
- Tensile load: 7.7 kg between socket and plug
- Operating temperature: -20° C to +70 °C (ISO/IEC 11801, EN 50173-1, ANSI/TIA/EIA 568 C)
- Socket mating cycle: > 750 acc. to ISO/IEC 11801, IEC 60603-7-5
- Terminal: > 200 acc. to ISO/IEC 11801, IEC 60603-7-5
- Core receptacle: 22-26 AWG solid and stranded conductors
- Insulation resistance: > 500 MOhm
- Contact resistance: < 20 milliOhm
- Dielectric strength: 1000 VDC (contact/contact), 1500 VDC (contact/ground)

Attributes

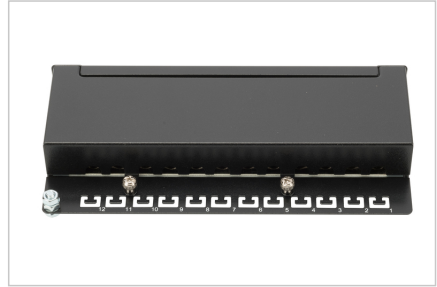
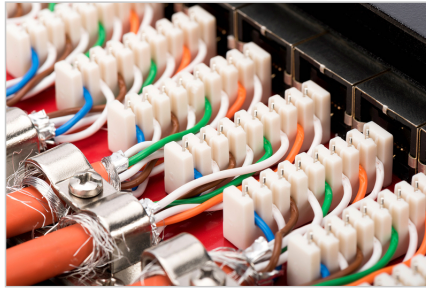
- Color: black, RAL 9005
- Ports: 12
- Units: 1
- Category: CAT 6A

Package contents

- Table housing
- Installation instructions
- Cable ties

Logistics						
	Number (pcs)	Weight (kg)	Depth (cm)	Width (cm)	Height (cm)	cm³
Packaging Unit Carton	10	10.70	59.00	31.00	20.00	36.58
Packaging Unit Inside	1	1.07	6.00	17.50	28.50	2,992.50
Packaging Unit Single	1	1.07	6.00	17.50	28.50	2,992.50
Net single without Packaging	0	0.00	0.00	0.00	0.00	0.00

More images:



Safety notes

- Protect product from moisture
- Avoid antistatic charging when installing the product
- Observe the specifications of the raw cable manufacturer during installation

EU responsible person

EU based economic operator ensuring the product complies with the required regulations.

ASSMANN Electronic GmbH
Auf dem Schüffel 3
Lüdenscheid, Germany
<https://www.assmann.com>
info@assmann.com