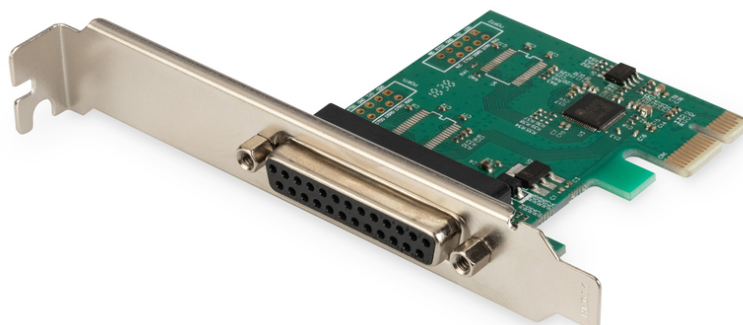


DIGITUS 1-Port Parallel Interface Card, PCI Express

DS-30020-1**EAN 4016032309383****Parallel I/O, 1-port, PCIe Express Add-On card 1x DB25 F, Slot Bracket+LP Bracket**

Get more out of your parallel peripherals! The DIGITUS® parallel interface card, PCIe helps your old parallel devices perform like never before! With data transfer speeds of up to 2.5 Mbits/sec – up to 3 times faster than built-in parallel ports!

Take full advantage of all your high-speed parallel devices

- 1x DSUB 25, parallel port, jack
- Chipset: AX99100
- Data transfer rate up to 1,5 Mbps
- Supports enhanced capability port (ECP)

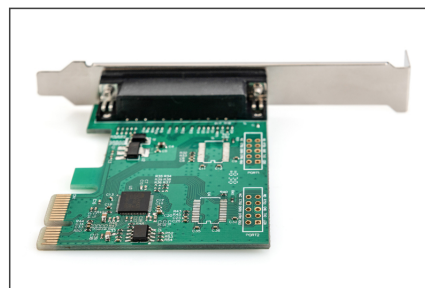
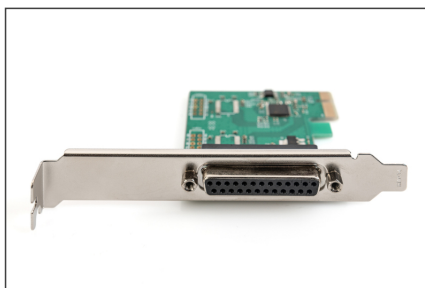
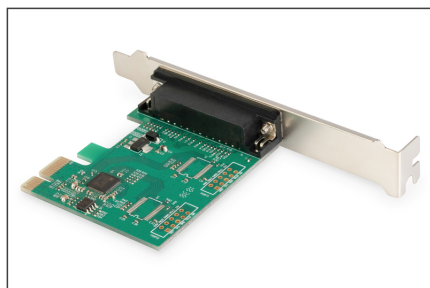
- Compliant with PCI Express base specification 2.0
- Compliant with PCI power management 1.2
- Incl. low profile bracket
- Operating temperature: 0 °C - 70 °C
- Operating humidity: 0% - 85% RH (non-condensing)
- Supports Windows 10, 8.1, 8, 7, Vista, XP, Mac OS X and Linux

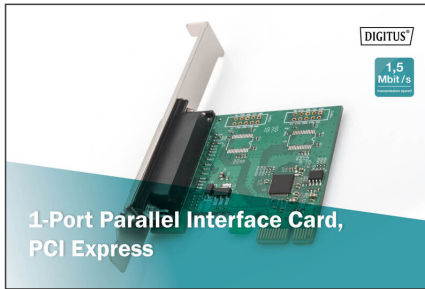
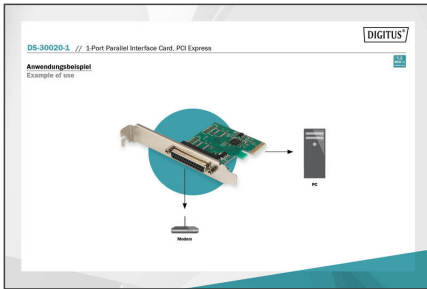
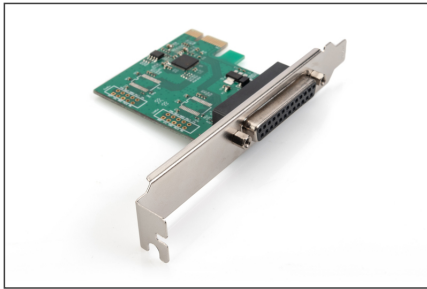
Package contents

- 1-Port Parallel Interface Card, PCI Express
- Low profile bracket
- Driver CD
- Manual

Logistics

	Number (pcs)	Weight (kg)	Depth (cm)	Width (cm)	Height (cm)	cm³
Packaging Unit Carton	40	8.40	38.00	38.00	30.00	43.32
Packaging Unit Inside	1	0.21	3.00	14.00	16.00	672.00
Packaging Unit Single	1	0.21	3.00	14.00	16.00	672.00
Net single without Packaging	0	0.00	0.00	0.00	0.00	0.00

More images:



Safety notes

- Switch off the computer completely and disconnect it from the power supply before installing or removing the network card.
- Static discharge can damage the product or the PC. Take measures against static discharge (ESD) when installing the product, e.g. wear an antistatic wrist strap.
- Before installation, touch the metal surface of the PC housing or another grounded object to ground any ESD charge via the housing.
- Avoid using too much force when connecting the product to the PC.
- Please ensure that any cables are connected correctly without overstretching or damaging them.
- Avoid touching the contacts of the product with your fingers to prevent corrosion or static charge.

EU responsible person

EU based economic operator ensuring the product complies with the required regulations.

ASSMANN Electronic GmbH
Auf dem Schöffel 3
Lüdenscheid, Germany
<https://www.assmann.com>
info@assmann.com