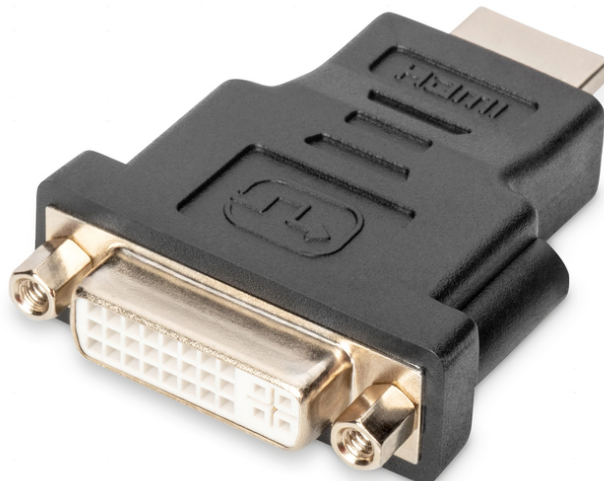


# DIGITUS® HDMI Adapter, HDMI to DVI-I

DB-330505-000-S

EAN 4016032298700



### HDMI Adapter, Type A-DVI-I(24+5) M/F, Full HD, HDMI 1.3 , bi

This adapter is suitable for connecting HDMI Type A cables to devices or cables with a DVI-I plug. It supports digital or analog signal transmission. The adapter works bi-directionally, which means it can adapt in both directions.

### Dual link adapter from HDMI to DVI - supports digital and analog signals

- Supports up to 1080p with 60 Hz
- Supports DVI 24+5 and DVI 24+1

### Attributes

- Color cable: black
- Connector 1: HDMI type A, plug
- Connector 2: DVI-I, (24+5), jack
- Connector surface: nickel-plated
- HDTV Standard: Full HD
- Hoods: molded
- Resolution max.: 1920 x 1200 Pixel, 60Hz
- AOC - Active Optical Cable: no
- Shielding: single shielding

### Package contents

- 1 x HDMI Adapter, HDMI to DVI-I

### Logistics

	Number (pcs)	Weight (kg)	Depth (cm)	Width (cm)	Height (cm)	cm³
Packaging Unit Carton	10	0.80	37.50	11.50	16.00	6.90
Packaging Unit Inside	10	0.80	37.50	11.50	16.00	6.90
Packaging Unit Single	1	0.08	3.50	10.00	13.50	472.50
Net single without Packaging	0	0.00	3.50	10.00	13.50	472.50

**More images:**



**Safety notes**

- When plugging and unplugging the cable, only grasp the plug and do not pull directly on the cable.
- Cables must not be kinked sharply or bent at tight angles, as this can damage the inner wires and lead to failures.
- Make sure that the cables are not under tensile load, as this can damage the insulation and the wires inside the cable.
- Ensure that cables are not laid in areas where they can be easily damaged mechanically.
- Cables should not be used in environments with extremely high or very low temperatures. Observe the product information on the maximum operating temperature of the cable
- Check cables regularly for visible damage such as cracks, kinks or signs of wear. Defective cables should be replaced immediately to avoid failures, short circuits or even electric shocks.

**EU responsible person**

EU based economic operator ensuring the product complies with the required regulations.

ASSMANN Electronic GmbH  
 Auf dem Schüffel 3  
 Lüdenscheid, Germany  
<https://www.assmann.com>  
[info@assmann.com](mailto:info@assmann.com)