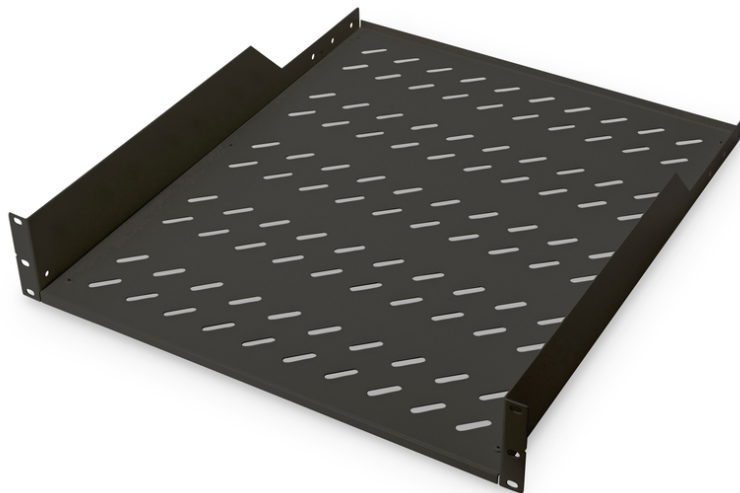


# DIGITUS® Shelf for Fixed Installation in 483 mm (19") Cabinets

DN-19 TRAY-2-55-SW  
EAN 4016032256830



**2U fixed shelf for racks from 800 mm depth 88,5x482x552 mm, up to 25 kg, black (RAL 9005)**

The shelves for fixed mounting can be installed easy on the two front 483 mm (19") profile rails of your 483 mm (19") network- or server cabinet. Due to their stable, perforated steel sheet with a high load capacity, they are the optimal surface for components which are not 483 mm (19") suitable.

- Fixed installation
- sturdy, perforated steel sheet
- incl. fixing material
- 2-point fixing (front 19" profile rails)

**Attributes**

- Boja: crna, RAL 9005
- Jedinice: 2
- Kapacitet opterećenja: 25 kg
- Vrsta montaže: Fiksna montaža
- Inčni faktor oblika (IEC 60297): 482,6 mm (19")
- Prikladna dubina ormara: 800 mm

**Package contents**

- Installation set (screws, cage nuts, washers)

Logistics						
	Number (pcs)	Weight (kg)	Depth (cm)	Width (cm)	Height (cm)	cm³
Packaging Unit Carton	5	18.95	61.00	50.50	51.00	157,106.00
Packaging Unit Inside	1	3.79	58.50	50.00	9.50	27,787.50
Packaging Unit Single	1	3.79	58.50	50.00	9.50	27,787.50
Net single without Packaging	0	3.14	54.90	48.20	8.80	23,286.40

**Safety notes**

- When installing and using the accessory product for network cabinets, observe the respective safety instructions of the manufacturer or the cabinet system in which you want to use the accessory.

**EU responsible person**

EU based economic operator ensuring the product complies with the required regulations.

ASSMANN Electronic GmbH  
Auf dem Schüffel 3  
Lüdenscheid, Germany  
<https://www.assmann.com>  
info@assmann.com