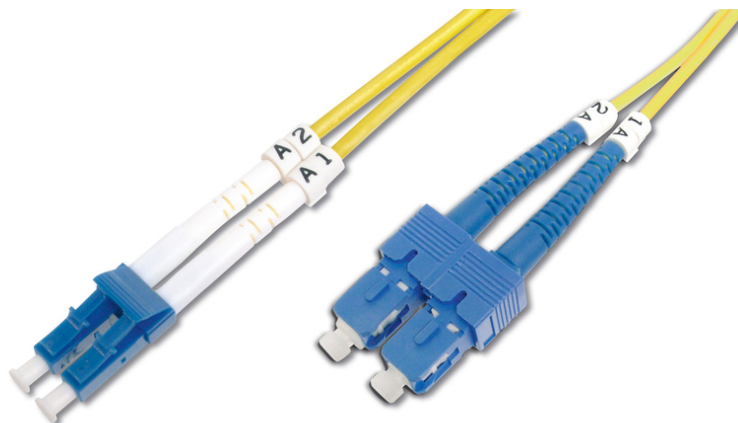


# DIGITUS Fiber Optic Singlemode Patch Cord, LC / SC

DK-2932-03  
EAN 4016032249658



**FO patch cord, duplex, LC to SC SM OS2 09/125  $\mu$ , 3 m**

FO patch cord, duplex, LC to SC, SM OS2 09/125  $\mu$ , 3 m

**Future-oriented standards and high-end quality for your network.**

- Duplex cable
- LSOH
- Connector with ceramic ferrule
- Cable diameter 2 mm
- Single packed with test-report
- Fiber Category : G.657.A2

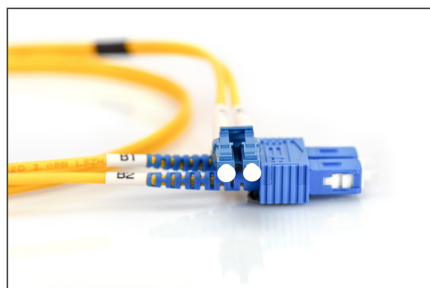
## Attributes

- Assortment: Fiber Optic Patch Cables
- Boot: single-color
- Cable diameter: 2 mm
- Cable type: I-VH 2E9/125 $\mu$
- Color cable: yellow
- Connector 1: LC
- Connector 2: SC
- Fiber class: OS2
- Fiber diameter: 9/125 $\mu$
- Mode: Singlemode
- Packaging: DIGITUS Polybag
- Length: 3 m

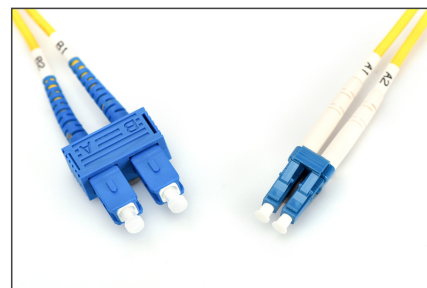
## Logistics

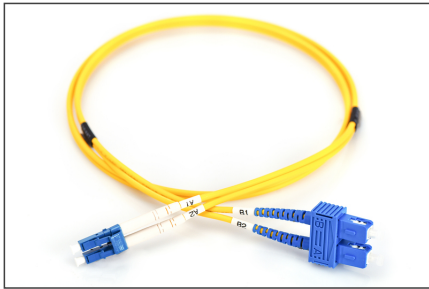
|                              | Number<br>(pcs) | Weight<br>(kg) | Depth<br>(cm) | Width<br>(cm) | Height<br>(cm) | cm <sup>3</sup> |
|------------------------------|-----------------|----------------|---------------|---------------|----------------|-----------------|
| Packaging Unit Carton        | 120             | 8.85           | 41.00         | 41.00         | 28.00          | 47,068.00       |
| Packaging Unit Inside        | 15              | 1.11           | 19.00         | 19.00         | 12.00          | 4,332.00        |
| Packaging Unit Single        | 1               | 0.07           | 17.00         | 17.00         | 1.00           | 289.00          |
| Net single without Packaging | 0               | 67.00          | 15.00         | 15.00         | 1.00           | 225.00          |

## More images:



|                     |                 |      |          |      |
|---------------------|-----------------|------|----------|------|
| Part No.            | DK-2932-03      |      |          |      |
| Lenght              | 3 m             |      |          |      |
| Cable Type          | Duplex SM 9/125 |      | OS2 LSZH |      |
|                     | END A           |      | END B    |      |
| Connector Type      | LC              |      | SC       |      |
| Insertion Loss (dB) | 0.17            | 0.17 | 0.10     | 0.21 |
| Return Loss (dB)    | 53.7            | 54.7 | 53.1     | 54.3 |
| Q.C.                | PASS            |      |          |      |



**Safety notes**

- Avoid direct contact with light sources: Fiber optic cables, especially those with active light sources such as lasers (e.g. in optical communication systems), can emit dangerous radiation that can damage
- eyes. Take care never to look directly into the light of an optical fiber, even if the light source is invisible to the naked eye.
- When working with fiber optic cables, especially during tests or when working with lasers, protective goggles should always be worn to protect against harmful radiation.
- When plugging and unplugging the cable, only grasp the plug and do not pull directly on the cable.
- Do not kink or crush: Fiber optic cables are sensitive to mechanical stress.
- To protect cables from physical damage, they should be laid in special ducts or with protective materials
- Keep cable connectors clean: Fiber optic cables are sensitive to dust and dirt. Even small particles on the connectors can severely impair the signal quality.
- Cables should not be used in environments with extremely high or very low temperatures. Observe the product information on the maximum operating temperature of the cable
- Check cables regularly for visible damage such as cracks, kinks or signs of wear. Defective cables should be replaced immediately.

**EU responsible person**

EU based economic operator ensuring the product complies with the required regulations.

ASSMANN Electronic GmbH  
Auf dem Schöffel 3  
Lüdenscheid, Germany  
<https://www.assmann.com>  
[info@assmann.com](mailto:info@assmann.com)