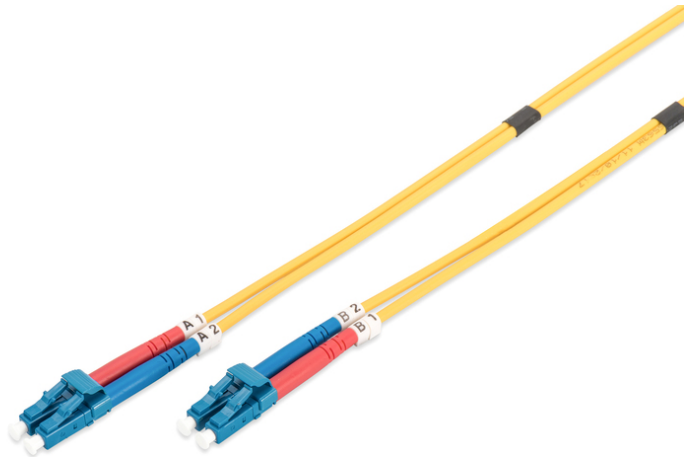


# DIGITUS Fiber Optic Singlemode Patch Cord, LC / LC

**DK-2933-10**  
**EAN 4016032248965**



**FO patch cord, duplex, LC to LC SM OS2 09/125  $\mu$ , 10 m**

FO patch cord, duplex, LC to LC, SM OS2 09/125  $\mu$ , 10 m

**Future-oriented standards and high-end quality for your network.**

- Duplex cable
- LSOH
- Connector with ceramic ferrule
- Cable diameter 2 mm
- Single packed with test-report
- Fiber Category : G.657.A2

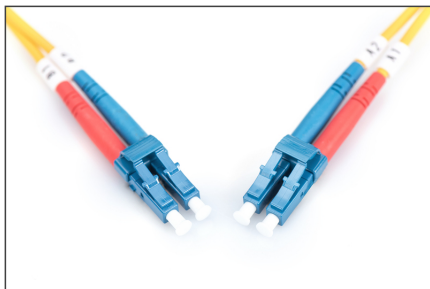
## Attributes

- Assortment: Fiber Optic Patch Cables
- Boot: single-color
- Cable diameter: 2 mm
- Cable type: I-VH 2E9/125 $\mu$
- Color cable: yellow
- Connector 1: LC
- Connector 2: LC
- Fiber class: OS2
- Fiber diameter: 9/125 $\mu$
- Mode: Singlemode
- Packaging: DIGITUS Polybag
- Length: 10 m

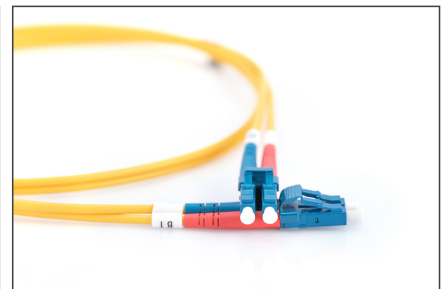
## Logistics

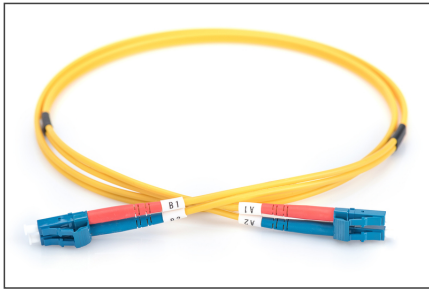
	Number (pcs)	Weight (kg)	Depth (cm)	Width (cm)	Height (cm)	cm <sup>3</sup>
Packaging Unit Carton	40	7.13	41.00	41.00	28.00	47,068.00
Packaging Unit Inside	5	0.89	19.00	19.00	12.00	4,332.00
Packaging Unit Single	1	0.18	17.00	17.00	2.40	693.60
Net single without Packaging	0	144.00	15.00	15.00	2.40	540.00

## More images:



Part No.	DK-2933-10			
Lenght	10 m			
Cable Type	Duplex SM 9/125		OS2 LSZH	
	END A		END B	
Connector Type	LC		LC	
Insertion Loss (dB)	0.12	0.15	0.15	0.19
Return Loss (dB)	51.8	53.2	51.1	50.7
Q.C.	PASS			



**Safety notes**

- Avoid direct contact with light sources: Fiber optic cables, especially those with active light sources such as lasers (e.g. in optical communication systems), can emit dangerous radiation that can damage
- eyes. Take care never to look directly into the light of an optical fiber, even if the light source is invisible to the naked eye.
- When working with fiber optic cables, especially during tests or when working with lasers, protective goggles should always be worn to protect against harmful radiation.
- When plugging and unplugging the cable, only grasp the plug and do not pull directly on the cable.
- Do not kink or crush: Fiber optic cables are sensitive to mechanical stress.
- To protect cables from physical damage, they should be laid in special ducts or with protective materials
- Keep cable connectors clean: Fiber optic cables are sensitive to dust and dirt. Even small particles on the connectors can severely impair the signal quality.
- Cables should not be used in environments with extremely high or very low temperatures. Observe the product information on the maximum operating temperature of the cable
- Check cables regularly for visible damage such as cracks, kinks or signs of wear. Defective cables should be replaced immediately.

**EU responsible person**

EU based economic operator ensuring the product complies with the required regulations.

ASSMANN Electronic GmbH  
Auf dem Schöffel 3  
Lüdenscheid, Germany  
<https://www.assmann.com>  
[info@assmann.com](mailto:info@assmann.com)