

# DIGITUS® CAT 6, Class E Patch Panel, shielded, black

DN-91612S

EAN 4016032241591



**CAT 6, Class E patch panel, shielded, 12-port RJ45 8P8C, LSA, 1U, 254 mm(10")Rack Mount, bl RAL 9005**

The CAT 6 Patch Panels for 254 mm (10") rack mount from DIGITUS® are manufactured with Link Performance Class E, for up to 250 MHz, ISO/IEC 11801 and EN 50173. Cable installation takes place via LSA strips which are color coded acc. EIA/TIA 568B. The housing consists of galvanized, cold-rolled steel, acc. EN1.4301, UNS S30400, AISI 304 and LMSAD110.

**Future-oriented standards and high-end quality for your network.**

- Area of application: Up to 250 MHz, 1GBase-T
- Norms: ISO/IEC 11801 3rd Ed., EN 50173-1, EIA/TIA 568-C
- General properties:
- Suitable for 254 mm (10") cabinet mounting
- RJ45 female, 8P8C
- Cable installation via LSA strips, color coded according to EIA/TIA 568 A & B
- Cable fixing with smart cable ties
- Central ground connection
- 360° shield coverage
- Mechanical properties:
- Housing material: 1.5 mm galvanic cold rolled steel, acc. to EN1.4301, UNS S30400, AISI 304 and LMSAD110
- RJ45 female material: ABS UL 94V-0

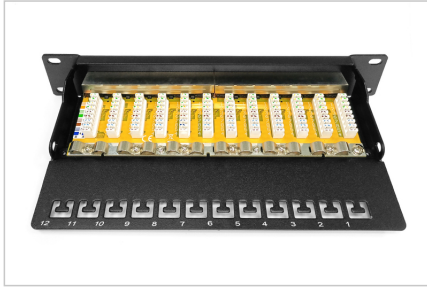
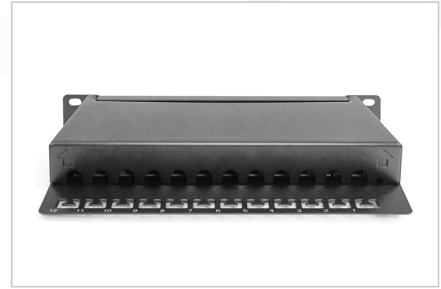
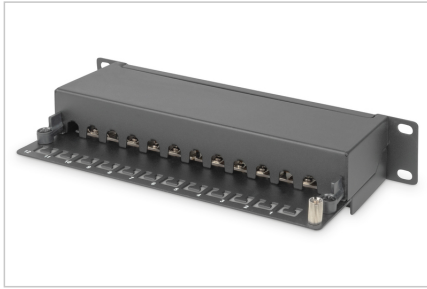
- RJ45 female contact: Tinned phosphor bronze, 0.5 mm gold-plated contact
- RJ45 shielding: Tinned bronze
- LSA termination clamp: Krone LSA+, UL 94V-2, zinc plated phosphor bronze
- Ground wire: Not included
- Conductor plate: FR4, UL 94V-0
- Physical properties:
- Insertion force: 30N max. (IEC 60603-7-5)
- Retention strength: 7.7 kg between jack and plug
- Operation temperature: -20° C to +70 °C (ISO/IEC 11801, EN 50173-1, ANSI/TIA/EIA 568 C)
- Mating cycles female: > 750 acc. to ISO/IEC 11801, IEC 60603-7-5
- Clamp: > 200 acc. to ISO/IEC 11801, IEC 60603-7-5
- IDC wire size: 22 – 26 AWG solid and stranded conductor
- Insulation resistance: > 500 MOhm
- Contact resistance: < 20 MilliOhm
- Dielectric strength: 1000 VDC (Contact/Contact), 1500 VDC (Contact/Ground)

**Attributes**

- Color: black, RAL 9005
- Ports: 12
- Units: 1
- Category: CAT 6

Logistics						
	Number (pcs)	Weight (kg)	Depth (cm)	Width (cm)	Height (cm)	cm³
Packaging Unit Carton	10	10.30	58.40	30.20	20.00	35,273.60
Packaging Unit Inside	1	1.03	6.00	28.00	17.50	2.94
Packaging Unit Single	1	1.03	6.00	28.00	17.50	2.94
Net single without Packaging	0	0.79	11.00	25.40	4.50	1,257.30

**More images:**



**Safety notes**

- Protect product from moisture
- Avoid antistatic charging when installing the product
- Observe the specifications of the raw cable manufacturer during installation

**EU responsible person**

EU based economic operator ensuring the product complies with the required regulations.

ASSMANN Electronic GmbH  
Auf dem Schüffel 3  
Lüdenscheid, Germany  
<https://www.assmann.com>  
[info@assmann.com](mailto:info@assmann.com)