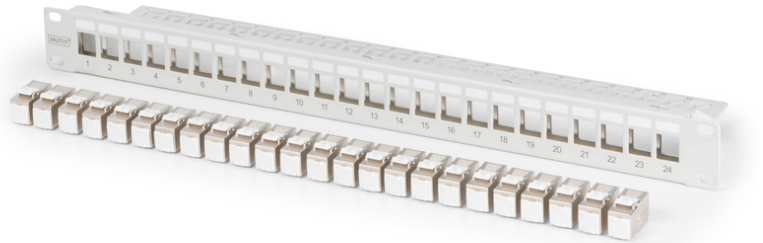


DIGITUS® Modular patch panel, 24-port, equipped with 24x DN-93615

DN-91410-24

EAN 4016032505730



Modular Patch Panel, shielded, with 24x DN-93615 24-port, 1U, rack mount, grey RAL 7035

The DIGITUS Modular Patch Panel, 24-port, is a robust, rack-mountable 19-inch panel with 24 CAT 6A Keystone modules (DN-93615) - ready for immediate, fast and efficient installation. It offers easy management and enables flexible network configurations thanks to its modular design. With fully matched CAT 6A Keystone modules included, there is no need for separate procurement or compatibility checks. An integrated cable management strip ensures order and stability, while the earthing connection provides additional safety. This complete solution optimizes rack space, reduces installation time and simplifies project planning - ideal for professional installers and demanding IT environments.

- Keystone mount version: Straight
- Application areas: 483 mm (19") distribution cabinet
- Standards: ISO/IEC 11801 3rd Ed., EN 50173-1, EIA/TIA 568-C
- General properties:
- Suitable for 483 mm (19") rack mounting
- Suitable for shielded Digitus® Keystone modules and connectors
- Central earthing connection

- Technical features:
- Housing material: 1.5 mm SPCC cold-rolled sheet steel, powder-coated
- Material standard: EN 10 130(1991), BS 1449, NFA 36/401, DIN 1623, UNI 5866, UNE 36-086, SIS, JIS G 3141, ASTM, SAE, NFA 36/401
- Material earthing bar: galvanized steel
- Physical properties:
- Operating temperature: -20° C to +70 °C (ISO/IEC 11801, EN 50173-1, ANSI/TIA/EIA 568 C)
- Operating temperature: -20° C to +70 °C (ISO/IEC 11801, EN 50173-1, ANSI/TIA/EIA 568 C)
- Color: Grey RAL7035
- equipped with 24x DN-93615 Keystone modules

Attributes

- Color: light grey, RAL 7035
- Ports: 24
- Units: 1
- Category: CAT 6A

Logistics						
	Number (pcs)	Weight (kg)	Depth (cm)	Width (cm)	Height (cm)	cm³
Packaging Unit Carton	15	0.00	0.00	0.00	0.00	0.00
Packaging Unit Inside	1	0.00	0.00	0.00	0.00	0.00
Packaging Unit Single	1	0.00	0.00	0.00	0.00	0.00
Net single without Packaging	0	0.00	0.00	0.00	0.00	212.52

More images:



DN-91410-24
Modular patch panel, 24 port equipped with 24x DN-93615

DIGITUS

This Set is combined of:

1x **DN-91410**
Modular Patch Panel, shielded, 24-port, blank, 1U, rack mount, grey RAL 7035

+

24x **DN-93615**
CAT 6E RJ45 module, shielded, tool-free mounting connection

DN-91410-24
Modular patch panel, 24 port equipped with 24x DN-93615

DIGITUS

Construction Method:
100% Shielded
100% CAT 6E
100% GHMT

Icons: ESD, CAT 6E, CAT 6E, 10 Gbps, Transmission Speed

DN-91410-24
Modular patch panel, 24 port equipped with 24x DN-93615

DIGITUS

Icons: ESD, CAT 6E, CAT 6E, 10 Gbps, Transmission Speed

GHMT

Shielded and tool-free design:
prevents signal loss, 100% shielded, 100% CAT 6E, 100% GHMT

100% GHMT
100% GHMT

100% CAT 6E
100% CAT 6E

10 Gbps
10 Gbps

ESD
ESD