

# DIGITUS® Wall-mounted enclosure SOHO Pro - 483 mm (19") - 540x400 mm (WxD)

DN-49202

EAN 4016032493709



## 19" 7U wall mounting cabinet, SOHO Pro 370 x 540 x 400 mm, unmounted, grey

Whether in the home, office or for sub-distribution boards with limited space: With the compact 483 mm (19") solutions from the SOHO Pro series, you can install your network wherever you want. Available in four height units (4U, 7U, 9U, 12U), the wall-mounted enclosures are equipped with a full glass door and a cable entry in the top and bottom. Two pairs of galvanized 483 mm (19") profile rails, labelled with legible height units, are installed inside. These can be adjusted in depth. Each cabinet is a robust steel construction made of up to 1.5 mm thick sheet steel. The coloring takes the form of electrostatic powder coating in the standard colors grey (RAL 7035) and black (RAL 9005). The door hinges can be changed. The network enclosures are supplied unassembled in an optimized flat pack. Assembly takes place in just a few steps and is child's play thanks to the enclosed step-by-step instructions.

**The DIGITUS® wall-mounted enclosure SOHO Pro series is characterized by efficient delivery in an optimized flat pack and particularly user-friendly installation.**

- Protection class IP20
- Lockable safety glass door, type 9473
- 200° door opening angle
- 1-point locking on the front door

- 483 mm (19") profile rails mounted at the front and rear inside the enclosure, galvanized
- 483 mm (19") profile rails are adjustable in depth
- 1.1 - 1.5 thick sheet steel with a high load-bearing capacity, powder-coated
- Cable entry with plastic cover in the roof and floor
- Ventilation slots for active and passive ventilation
- Installation depth for components max.: 319.25 mm
- Product dimensions (H x W x D): 370 x 540 x 400 mm

### Attributes

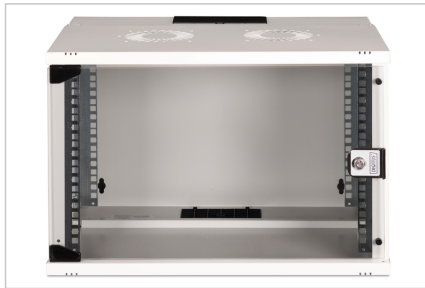
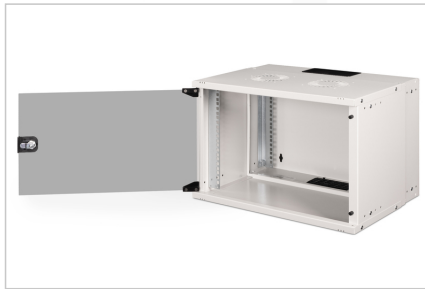
- Cabinet type: Wall mounting cabinet
- Color: light grey, RAL 7035
- Depth: 400 mm
- Front door: Glass door, single opening
- Load capacity: 60 kg
- Side panels: Both sides
- Units: 7
- Width: 540 mm
- IP protection class: IP20
- Mounted: no

### Package contents

- 2x key
- 1x QIG

Logistics						
	Number (pcs)	Weight (kg)	Depth (cm)	Width (cm)	Height (cm)	cm³
Packaging Unit Carton	1	9.88	58.00	38.50	17.50	39,077.50
Packaging Unit Inside	1	9.88	58.00	38.50	17.50	39,077.50
Packaging Unit Single	1	9.88	58.00	38.50	17.50	39,077.50
Net single without Packaging	0	9.11	40.00	54.00	37.00	0.00

More images:



**DN-45202**  
Wall Mounting Cabinet S01HD PRO  
483mm (19") - 540x400mm (WD)

**DIGITUS**

- Slide the top panel onto the body in the direction of the arrows. The direction of movement of the top panel has to be identical to the colour (black) of the body. Insert the top edge of the glass cover to the top rail. In the end, press inward downwards at the top panel in the direction of the arrows. Assemble the bottom panel to the body by 4 screws.
- Put the cabinet on the floor. Use the bottom panel marking the ground. Check the accuracy of the bottom panel placement and the movement of the top panel upwards.
- Show the QR code and camera to enable the installation video. Your S01HD cabinet is ready to use.

**DN-45202**  
Wall Mounting Cabinet S01HD PRO  
483mm (19") - 540x400mm (WD)

**DIGITUS**

- Take the 12" S01HD cabinet out of the box.
- Open the transport case placed at the top.
- Slide the bottom panel onto the body in the direction of the arrows. The direction of movement of the bottom panel has to be identical to the colour (black) of the body. Insert the bottom edge of the glass cover into the gap of the body. Press the bottom panel to the body by the screws. Finally, the screws should be fully tight. Be sure to be checked if the cabinet body movement is smooth. If not, the panel may need to be re-adjusted. Please note: The QR code and camera are available on the bottom panel. The QR code and camera should be used to be on the back side of the glass door.
- Use the body down and bottom panel to be at all the locations. Insert the top edge of the glass door from the top rail of the top panel.