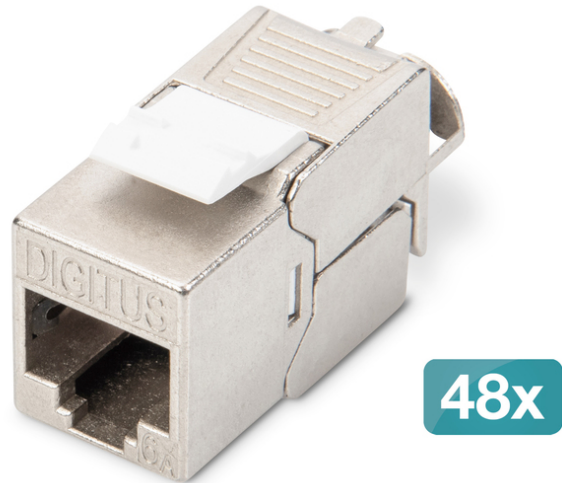


# DIGITUS® CAT 6A Keystone module, shielded, tool-free mounting connection - 48 pcs.

DN-93615-48

EAN 4016032490586



### CAT 6A Keystone Jack, shielded, 48 pcs. toolfree connection

The shielded CAT 6A Keystone module set DN-93615 from DIGITUS® impresses with future-oriented standards and high-end quality for your network. The compact design allows a series installation in 483 mm (19") 1U panels. The tool-free installation is carried out via LSA strips, color-coded according to EIA/TIA 568 A&B. Thanks to its compact design, the module also fits into design-compatible modular junction boxes.

#### Quick and easy installation without special tools

- Category 6A 10GBase-T, 500 MHz
- ISO/IEC 11801 3rd Edition, EN 50173-1
- Suitable for IEEE 802.3 af/at/bt - PoE, PoE+ (4PPoE in permanent link)
- Suitable for distribution panel and junction box installation
- RJ45 socket, 8P8C
- Cable installation via insulation displacement connectors, color-coded according to EIA/TIA 568 A & B
- Strain relief and cable fixing using cable ties
- Tool-free mounting connection
- 360° shield contacting
- Housing material: Zinc die-cast - nickel-plated
- Contact material: phosphor bronze
- Coating Contacts: Nickel, gold-plated 0.5 μm

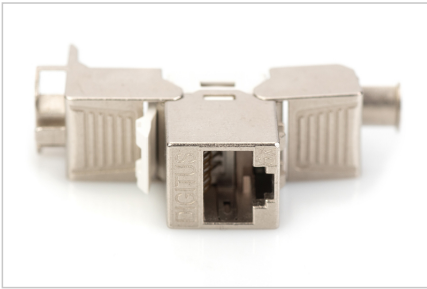
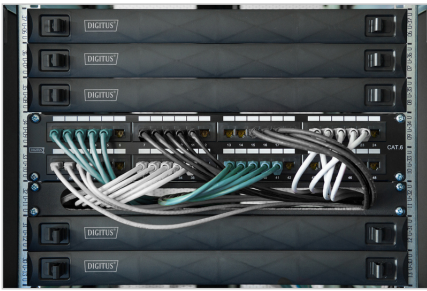
- Insertion force: Max. 30N (according to IEC 60603-7-51)
- Holding force: 7.7 kg between socket and plug
- Operating temperature: -20 °C up to +70 °C (ISO/IEC 11801, ANSI/TIA 568 C.2)
- Mating cycles: 750 (ISO/IEC 11801, IEC 60603-7-51)
- In accordance with IEC 60512-5, IEC 60512-6-5
- Copper conductor diameter: AWG (26/7 - 22/1), stranded and solid wire
- Tested with AWG 22/1 solid installation cable (DIGITUS® DK-174X-A-VH-X; AWG 22/1 Cat.7A installation cable)
- Dielectric strength: 1000 VDC (contact/contact), 1500 VDC (contact/ground)
- Tool-free installation using LSA insulation displacement connectors, color-coded in accordance with EIA/TIA 568 A & B
- Intelligent cable manager (reclosable)
- CAT 6A Keystone module, shielded Set: 48 pieces
- Dimensions (HxWxD): 21.0 x 14.5 x 34.5 mm
- Weight: 19.5 g

#### Attributes

- Category: CAT 6A

Logistics						
	Number (pcs)	Weight (kg)	Depth (cm)	Width (cm)	Height (cm)	cm³
Packaging Unit Carton	2	1.25	23.00	23.00	7.50	3,967.50
Packaging Unit Inside	1	625.00	0.00	0.00	0.00	0.00
Packaging Unit Single	1	625.00	3.10	1.50	2.10	9,765.00
Net single without Packaging	0	0.00	0.00	0.00	0.00	0.00

More images:



**DN-93615-48**  
CAT 6, Keystone Module, shielded, toolfree, 48 pieces

Shielded  
 CAT 6  
 10 Gbps  
 Toolfree Installation

Patch Panel Connector  
 Cable-edge Installation Cable  
 Patch Panel Connector

**DN-93615-48**  
CAT 6, Keystone Module, shielded, toolfree, 48 pieces

Shielded  
 CAT 6  
 10 Gbps  
 Toolfree Installation

Compatible with CAT 6a, CAT6 and 600V-UTP Cable  
 Patch Panel and J-Box  
 CAT 6 and CAT 6a Patch Panel  
 Patch Panel and J-Box  
 Patch Panel and J-Box  
 Patch Panel and J-Box

Shielded and testing design  
 prevents signal loss, EMI noise  
 Eliminates cross-talk between  
 ports and EMI/RFI signals

100% and 100%  
 testing accuracy  
 100% and 100%  
 testing accuracy  
 100% and 100%  
 testing accuracy

**DN-93615-48**  
CAT 6, Keystone Module, shielded, toolfree, 48 pieces

Shielded  
 CAT 6  
 10 Gbps  
 Toolfree Installation

Installation Cable  
 Network Outlet

**DN-93615-48**  
CAT 6, Keystone Module, shielded, toolfree, 48 pieces

Shielded  
 CAT 6  
 10 Gbps  
 Toolfree Installation

GHMT

**DN-93615-48**  
CAT 6, Keystone Module, shielded, toolfree, 48 pieces

Shielded  
 CAT 6  
 10 Gbps  
 Toolfree Installation

GHMT

**DN-93615-48**  
CAT 6, Keystone Module, shielded, toolfree, 48 pieces

Shielded  
 CAT 6  
 10 Gbps  
 Toolfree Installation

GHMT

**DN-93615-48**  
CAT 6, Keystone Module, shielded, toolfree, 48 pieces

Shielded  
 CAT 6  
 10 Gbps  
 Toolfree Installation

Connection Method:  
 T568A T568B

