

# DIGITUS® Basic IT PDU, 1-phase 32A, 24 x C13, 4 x C19, 3 m supply cable, IEC 60309 32 A plug

DN-95451

EAN 4016032485964



## IT BASIC PDU, Vertical, 32A, 24 x C13, 4 x C19 IT BASIC PDU, Vertical, 32A, 24 x C13, 4 x C19

The DIGITUS® PDU are the perfect solution for your network or server cabinet. With regard to power distribution, it fulfills the requirements of many applications in IT, network technology and laboratories. The individual C13 and C19 outlets are equipped with extract protection. It is optimally designed for vertical installation providing the advantage of saving rack spaces for more equipments. The 28 outlet PDU has excellent physical characteristics and is engineered for an output of up to 8,000 W (250 V AC / 32 A) which helps in achieving best performances with the appropriate load.

### Safe and professional power distribution solution for highly demanding IT requirements in network and server racks

- Extraction protection at each output (for C13 and C19 standard cables)
- Vertical installation
- Housing: Aluminum
- Plastic components made of ABS UL-94V-0
- Integrated circuit breaker, 2 x 16 A

- Mains plug: 4 mm<sup>2</sup>, IEC60309 32 A plug
- Cable: 3 m
- Max. Load: 8000 W / 250 V AC / 32 A (50/60Hz)
- Outlets: 24 x IEC60320 C13, 4 x IEC60320 C19
- Output power: C13 (10A), C19 (16A)
- Dimensions (L x W x D): 1388,5 x 45 x 60 mm
- Colour: Black

### Attributes

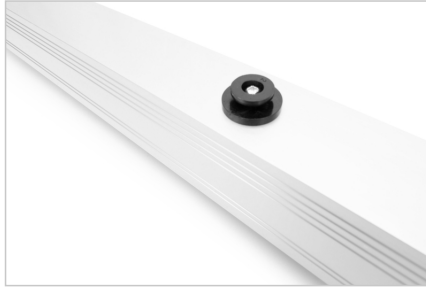
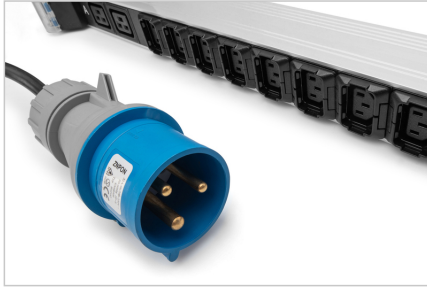
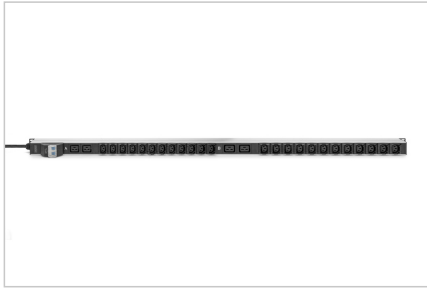
- Additional Features: Circuit breaker
- Current: 32 A
- Input Plug: IEC 60309 32A 1ph/N/PE 6h
- Installation: Rack OU
- Outlets: IEC 60320 C13, IEC 60320 C19
- Phase: 1ph
- Power: 7,3 kVA
- Volts: 230 V

### Package contents

- Scope of delivery: 1 socket strip, 1 safety instructions

Logistics						
	Number (pcs)	Weight (kg)	Depth (cm)	Width (cm)	Height (cm)	cm <sup>3</sup>
Packaging Unit Carton	1	0.00	0.00	0.00	0.00	0.00
Packaging Unit Inside	1	0.00	0.00	0.00	0.00	0.00
Packaging Unit Single	1	0.00	0.00	0.00	0.00	0.00
Net single without Packaging	0	0.00	0.00	0.00	0.00	0.00

More images:



**DN-95451**  
Basic IT PDU, 1-phase 32A, 24 x C13, 4 x C19, 3 m Supply Cable, IEC 60320 32 A Plug

**DIGITUS**

Safety Protection  
 230V/ 25A  
 Cable Length

Optimal Design for Mounting in 19" Racks, Superior Design for the longest in 19" Racks

Standard Output Power: 6000W (230V/25A)  
24 x IEC60320 C13

**DN-95451**  
Basic IT PDU, 1-phase 32A, 24 x C13, 4 x C19, 3 m Supply Cable, IEC 60320 32 A Plug

**DIGITUS**

Safety Protection  
 230V/ 25A  
 Cable Length

Optional Features (Standard):

6000W (230V/25A) IEC 60320 32 A Plug  
3m Cable