

# DIGITUS Gigabit Outdoor 60W PoE Surge Protector

DN-95424

EAN 4016032482420



## Outdoor POE Surge Protector (60W) 10/100/1000 Mbits , -40 to 65C, IP67, 10KV, 20KA

DN-95424 is a single-port PoE surge protector designed for exterior applications with an IP 67 rated Aluminum alloy case. It supports 8 lines network signals and provides surge protection for PoE wires. The maximum common mode surge voltage is 10KV(10/700us) and max differential mode surge voltage is 6KV(10/700us). It supports 10/100/1000Mbps of data rates. Ideal for 60W(max) PoE wires and well protects your devices against surge damage. Designed for outdoor use,the DN-95424 operates from -40℃ to +65℃ in an IP67 enclosure and works with voltage 60Vdc(Max). Equip port should always be connected to device which you want it to be protected.

### DN-95424 is a single-port PoE surge protector designed for exterior applications with an IP 67 rated Aluminum alloy case.

- maximum common mode surge voltage is 10KV(10/700us)
- and max differential mode surge voltage is 6KV(10/700us)
- supports 10/100/1000Mbps of data rates
- Ideal for 60W(max) PoE wires
- IP 67 ideal designed for outdoor use
- - IEEE802.3 10Base-T Ethernet
- - IEEE802.3u 100Base-Tx Fast Ethernet
- - IEEE802.3ab 1000Base-T Gigabit Ethernet
- - Support PoE wire with IEEE802.3af/at standards
- Support 60W PoE++ standards
- Operating Voltage : Support Max 60Vdc
- Maximum Operating DC Current :0.68A for 2 pairs, 1.36A for 4 pairs, maximum 60W

- Power Pins: 4/5(+), 7/8(-) and 3/6(+),1/2(-)
- Data Speed: 10/100/1000Mbps
- Operating Temperature: -40℃ to 65℃
- Operating Humidity: 20% to 80%, non-condensation
- Storage Temperature: -40℃ to 85℃
- Storage Humidity: 10% to 95%, non-condensation
- Operating Altitude: up to 5000meters
- Max Discharge Current: 20KA(8/20us,2.5KA per line)
- Protected Line: 1,2,3,4,5,6,7,8
- Common Mode Protection Level(10/700us): 10KV
- Differential Mode Protection Level(10/700us): 6KV
- Clamping Voltage(Line to GND): 120V
- Clamping Voltage(Line to Line): 25V
- Insertion Loss @10MHz/100MHz:≤1db
- Return Loss @10MHz/100MHz: -20db
- Response Time≤5ns
- Mounting: Wall-mounted
- IP Rated: IP67
- Size: 209mm X 53mm X 37.5mm
- Weight: 380g
- Weight: 380g
- Industrial usage: no

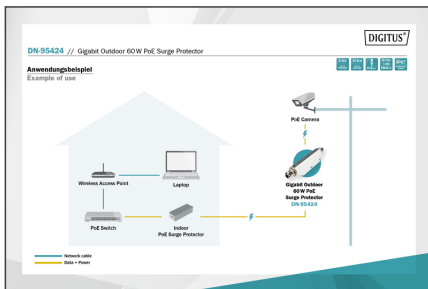
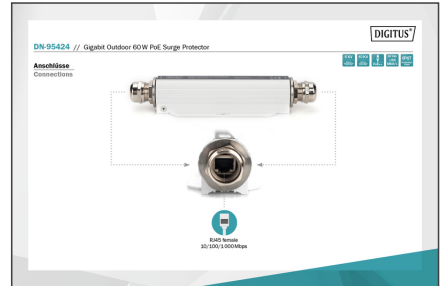
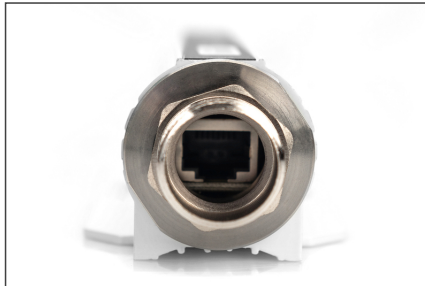
### Package contents

- PoE Surge Protector x1
- Ground lug Wire: 16AWG x1
- Manual x 1

## Logistics

	Number (pcs)	Weight (kg)	Depth (cm)	Width (cm)	Height (cm)	cm <sup>3</sup>
Packaging Unit Carton	30	13.65	25.00	39.50	28.50	28,143.80
Packaging Unit Inside	1	0.45	0.00	0.00	0.00	0.00
Packaging Unit Single	1	0.45	60.00	230.00	50.00	690,000.00
Net single without Packaging	0	0.38	53.00	209.00	37.50	415,388.00

More images:



**Gigabit Outdoor 60 W  
PoE Surge Protector**