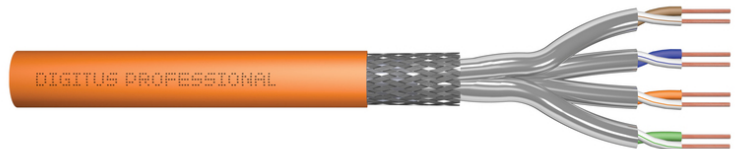


# DIGITUS® CAT 7 S/FTP data cable - installation cable, 500 m, simplex, B2ca

DK-1745-VH-5

EAN 4016032435884



## CAT 7 S-FTP installation cable, 1200 MHz B2ca (EN 50575), AWG 23/1, 500 m drum, Sx, orange

The Digitus Cat 7 installation cable is designed for use in structured data centers and building cabling in accordance with ISO/IEC 11801, DIN EN 50288-4-1, DIN EN 50173, IEC 61156-7, EN 50288-9-1. The cable is ideal for the transmission of analog and digital data and supports PoE, PoE+, 4PPoE (IEEE 802.3af;3at;3bt). The shield structure consists of individually shielded pairs with a tinned copper braid, which ensures excellent shielding and electrical values.

### Future-oriented standards and high-end quality for your network.

- Physical properties:
- Conductor: Bare copper wire, AWG 23/1
- System(s) of assessment and verification of constancy of performance: System 3
- Insulation: SFS-PE (foamed polyethylene jacket)
- Total number of insulated conductors: 8, twisted into 4 pairs
- Color code: Blue-white, orange-white, green-white, brown-white
- Shielding of the individual pairs: aluminum-laminated polyester film, covers 100%
- Overall shielding: copper braiding
- Outer sheath: B2ca according to EN 50575; LSZH
- Outer sheath thickness (nominal): 0.50 mm (Eca); 0.52 mm (Dca); 0.60 mm (Cca); 0.60 (B2ca)
- Color: Orange (RAL 2008)
- Mechanical properties:
- Strain relief: 135N max.
- Dynamic bending radius: 8x AD mm min.
- Static bending radius: 4x AD mm min.

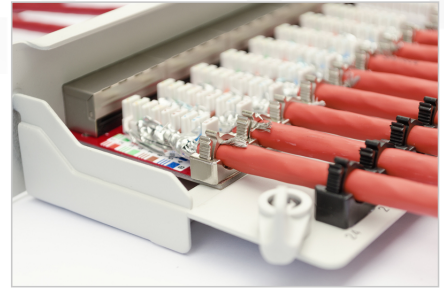
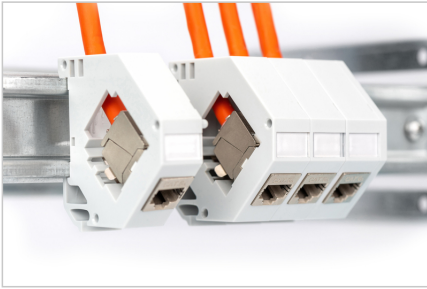
- Transport and storage temperature range: -20 °C to +60 °C
- Operating temperature range: -20 °C to +50 °C
- Installation temperature range: 0 °C to +50 °C
- Electrical properties:
- Impedance: 100±15 Ohm @ 4 - 1000 MHz; 100±25 OHM @ 100-600 MHz
- Capacitance: 45pF/m nom. at 1KHz
- Capacitance: 40 pF/m nominal @ 1 KHz
- Insulation resistance: 5 GOhm x km min.
- DC resistance: 95 Ohm/km max. (2% max. unbalanced resistance)
- Loop resistance: 190 Ohm/km max. (2% max. unbalanced resistance)
- Operating voltage: 72 Vdc max.
- Coupling attenuation: CA-Type 1b
- Phase delay: 450 nS/100 m max.
- Time delay: 10 nS/100 m max.
- Separation class: "d" according to EN 50174-2
- NVP: 79%
- Flame spread: EN 60332-1-2 (LSOH-PVC)
- Halogen-free, corrosiveness: EN 60754-1/2 (LSOH)
- Smoke density EN 61034-2

### Attributes

- Assortment: Twisted Pair Installation Cables
- Category: CAT 7
- Shielding: S-FTP, pairs in metal foil and braid shielding
- CPR: B2ca
- Length: 500 m
- Color: orange
- Jacket: LSOH
- Structure: 4 x 2 AWG 23/1, solid twisted pair

Logistics						
	Number (pcs)	Weight (kg)	Depth (cm)	Width (cm)	Height (cm)	cm³
Packaging Unit Carton	1	28.01	50.00	50.00	22.00	55,000.00
Packaging Unit Inside	1	28.01	50.00	50.00	22.00	55,000.00
Packaging Unit Single	1	28.01	0.00	0.00	0.00	0.00
Net single without Packaging	0	0.00	0.00	0.00	0.00	0.00

More images:



**DIGITUS**

AWG 23/1 | 1200 MHz | 10 Gbit Ethernet | CAT 7 1000 MHz | 20/7+50° | LSZH | B2<sub>ca</sub> CPFL class

**CAT 7 S/FTP Installation Cable, 500m, Simplex, B2<sub>ca</sub>**

**DIGITUS**

DK-1745-VH-S // CAT 7 S/FTP Installation Cable, 500m, Simplex, B2<sub>ca</sub>

Anwendungsbeispiel  
Example of use

**DIGITUS**

DK-1745-VH-S // CAT 7 S/FTP Installation Cable, 500m, Simplex, B2<sub>ca</sub>

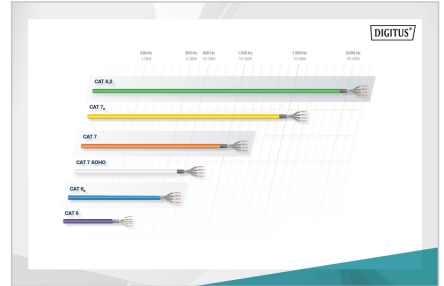
Kabelquerschnitt  
Cable cross section

**DIGITUS**

Produktdaten / Product Information	Physische Spezifikationen / Physical Properties
<b>Bestandteile / Components:</b> 1x CAT 7 S/FTP Installation Cable, 500m, Simplex, B2 <sub>ca</sub> <b>Materialien / Materials:</b> 1x CAT 7 S/FTP Installation Cable, 500m, Simplex, B2 <sub>ca</sub> <b>Abmessungen / Dimensions:</b> 1x CAT 7 S/FTP Installation Cable, 500m, Simplex, B2 <sub>ca</sub>	<b>Leitungsstruktur / Conductor Structure:</b> 4x 2x2x0,15mm (AWG 23/1) <b>Isolation / Isolation:</b> 1x 0,15mm (AWG 23/1) <b>Shielding / Shielding:</b> 1x 0,15mm (AWG 23/1)

**DIGITUS**

Leitungsstruktur / Conductor Structure									
PAIRS	AWG	MM	MM	MM	MM	MM	MM	MM	MM
1	2	3	3	3	3	3	3	3	3
2	2	3	3	3	3	3	3	3	3
3	2	3	3	3	3	3	3	3	3
4	2	3	3	3	3	3	3	3	3
5	2	3	3	3	3	3	3	3	3
6	2	3	3	3	3	3	3	3	3
7	2	3	3	3	3	3	3	3	3
8	2	3	3	3	3	3	3	3	3
9	2	3	3	3	3	3	3	3	3
10	2	3	3	3	3	3	3	3	3



**DIGITUS**

FFP Konformität / FFP Compliance	Bestandteile / Components	Leitungsstruktur / Conductor Structure	Abmessungen der Konformität / Dimensions of Compliance	Zusätzliche Informationen / Additional Information
B2 <sub>ca</sub>	Stahl hoch / Steel high	1+	• Spannungsbildung / Voltage formation • Flammwidrigkeit / Flame retardancy • Regelmäßige Prüfung des Herstellers / Regular inspection by the manufacturer	• Spannungsbildung / Voltage formation • Flammwidrigkeit / Flame retardancy • Regelmäßige Prüfung des Herstellers / Regular inspection by the manufacturer
C <sub>ca</sub>	Hoch / High	3	• Spannungsbildung / Voltage formation	• Spannungsbildung / Voltage formation
D <sub>ca</sub>	Mittel / Medium	3	• Spannungsbildung / Voltage formation	• Spannungsbildung / Voltage formation
E <sub>ca</sub>	Gering / Low	3	• Spannungsbildung / Voltage formation	• Spannungsbildung / Voltage formation

