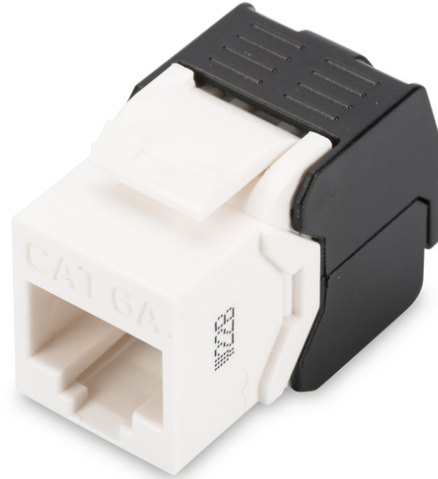


DIGITUS® CAT 6A Keystone module, unshielded

DN-93606

EAN 4016032366317



CAT 6A Keystone Jack, unshielded tool free connection

The "DN-93606" keystone module from DIGITUS® is unshielded and offers excellent performance and connection quality for your network with a tool-free mounting connection. Its compact design allows 24 units to be installed in series in 483 mm (19") 1U panels. It is compliant with Category 6A / 10GBase-T Channel, ANSI/EIA/TIA 568C.2.1:2002, ISO/IEC 11801:2002.

- Transmission characteristics: Category 6A, class EA
- Application areas: Up to 500 MHz, 10GBase-T
- Suitable for IEEE 802.3 af/at/bt - PoE, PoE+ & 4PPoE (in permanent link)
- General properties:
- Suitable for 483 mm (19") rack mounting
- RJ45 sockets, 8P8C
- Cable installation via LSA strips, color-coded according to EIA/TIA 568 A & B
- Cable fixation by means of quick latches
- Tool-free mounting connection
- Technical features:
- RJ45 socket material: ABS UL 94V-0

- Contact RJ45 socket: Nickel-plated phosphor bronze, gold-plated contact
- LSA cutting clamp: Krone LSA+, UL 94V-2, galvanized phosphor bronze
- Printed circuit board: FR4, UL 94V-0
- Physical properties:
- Insertion force: 30N max. (IEC 60603-7-5)
- Tensile load: 7.7 kg between socket and plug
- Operating temperature: -20° C to +70 °C (ISO/IEC 11801, EN 50173-1, ANSI/TIA/EIA 568 C)
- Socket mating cycle: > 750 acc. to ISO/IEC 11801, IEC 60603-7-5
- Terminal: > 200 acc. to ISO/IEC 11801, IEC 60603-7-5
- Core receptacle: 22-26 AWG solid and stranded conductors
- Insulation resistance: > 500 MOhm
- Contact resistance: < 20 milliOhms
- Dielectric strength: 1000 VDC (contact/contact), 1500 VDC (contact/ground)

Attributes

- Category: CAT 6A

Logistics						
	Number (pcs)	Weight (kg)	Depth (cm)	Width (cm)	Height (cm)	cm³
Packaging Unit Carton	250	3.80	53.00	33.00	22.00	38,478.00
Packaging Unit Inside	25	0.38	10.00	20.00	14.00	2,800.00
Packaging Unit Single	1	0.02	2.00	8.00	10.00	160.00
Net single without Packaging	0	0.02	2.00	8.00	10.00	160.00

More images:

