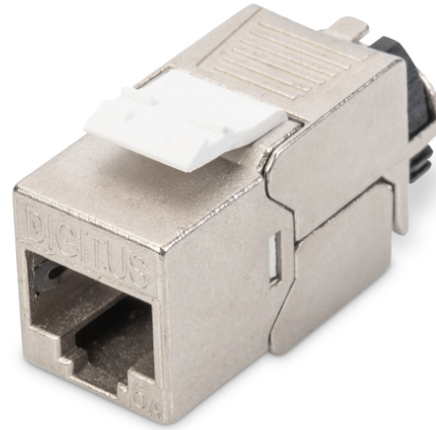


DIGITUS® CAT 6A Keystone module, shielded with intelligent cable manager

DN-93617

EAN 4016032353539



CAT 6A Keystone Jack, shielded tool free connection

The shielded CAT 6A Keystone module set DN-93617 from DIGITUS® impresses with future-oriented standards and high-end quality for your network. The modules have 360° shield contacting, a locking lever and a reclosable, intelligent cable manager for strain relief and cable fixing. The compact design allows for row installation in 483 mm (19") 1U panels. The tool-free installation is carried out via LSA strips, color-coded in accordance with EIA/TIA 568 A&B. Thanks to its compact design, the module also fits into design-compatible modular junction boxes.

Design-capable, shielded, tool-free and intelligent cable manager

- Category 6A 10GBase-T, 500 MHz
- ISO/IEC 11801 3rd Edition, EN 50173-1
- Suitable for IEEE 802.3 af/at/bt - PoE, PoE+ (4PPoE in permanent link)
- Suitable for distribution panel and junction box installation
- RJ45 socket, 8P8C
- Cable installation via insulation displacement connectors, color-coded according to EIA/TIA 568 A & B
- Strain relief and cable fixing using intelligent cable manager
- Tool-free mounting connection
- 360° shield contacting
- Housing material: Zinc die-cast - nickel-plated

- Contact material: Phosphor bronze
- Coating Contacts: Nickel, gold-plated 0.5 μ
- Insertion force: Max. 30N (according to IEC 60603-7-51)
- Holding force: 7.7 kg between socket and plug
- Operating temperature: -20 °C up to +70 °C (ISO/IEC 11801, ANSI/TIA 568 C.2)
- Mating cycles: ≥ 1000 (ISO/IEC 11801, IEC 60603-7-51)
- In accordance with IEC 60512-5, IEC 60512-6-5
- Copper conductor diameter: AWG (26/7 - 22/1), stranded and solid wire
- Tested with AWG 22/1 solid installation cable
- (DIGITUS® DK-174X-A-VH-X; AWG 22/1 Cat.7A installation cable)
- Dielectric strength: 1000 VDC (contact/contact), 1500 VDC (contact/ground)
- Tool-free installation using LSA insulation displacement connectors, color-coded in accordance with EIA/TIA 568 A & B
- Intelligent cable manager (reclosable)
- Dimensions (HxWxD): 21.0 x 14.5 x 34.5 mm
- Weight: 19.5 g

Attributes

- Category: CAT 6A

Logistics						
	Number (pcs)	Weight (kg)	Depth (cm)	Width (cm)	Height (cm)	cm³
Packaging Unit Carton	500	12.30	48.50	40.00	25.00	48,500.00
Packaging Unit Inside	50	1.23	23.00	23.00	7.50	3,967.50
Packaging Unit Single	1	0.02	3.10	1.50	2.10	9,765.00
Net single without Packaging	0	0.20	3.10	1.50	2.10	9,765.00

More images:

