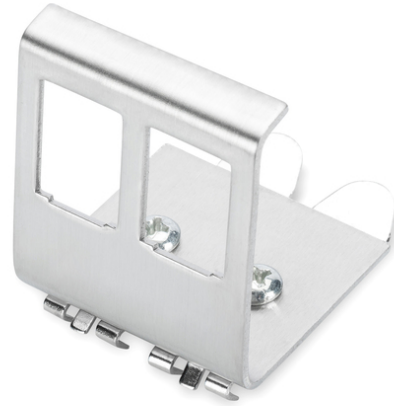


DIGITUS® DIN rail adapter for 2x Keystone modules

AN-25185

EAN 4016032306344



DIN-Rail adapter for 2x Keystone Modules

The DIGITUS® DIN rail adapters are used to accommodate DIGITUS® Keystone modules. They are available as 1-port or 2-port versions.

- Keystone mount version: 45° outlet
- Areas of application: Electrical distribution boxes
- Standards: ISO/IEC 11801 3rd Ed., EN 50173-1, EIA/TIA 568-C
- General properties:

- Suitable for installation on the top-hat rail in electrical distribution boxes
- Technical features:
- Material empty housing: stainless steel
- Physical properties:
- Operating temperature: -20° C to +70 °C (ISO/IEC 11801, EN 50173-1, ANSI/TIA/EIA 568 C)

Logistics

	Number (pcs)	Weight (kg)	Depth (cm)	Width (cm)	Height (cm)	cm³
Packaging Unit Carton	200	9.50	32.00	27.00	33.00	28,512.00
Packaging Unit Inside	10	475.00	25.00	6.00	6.00	900.00
Packaging Unit Single	1	0.05	18.00	8.00	4.00	576.00
Net single without Packaging	0	0.05	10.00	7.00	4.00	280.00