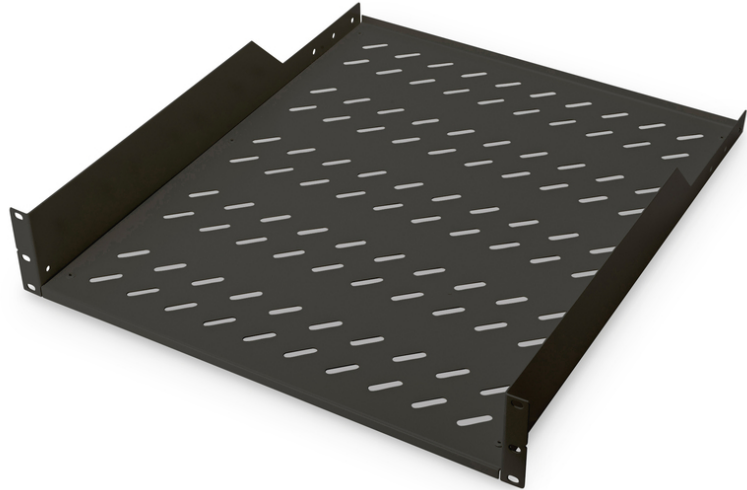


# DIGITUS® Shelf for Fixed Installation in 483 mm (19") Cabinets

DN-19 TRAY-2-55-SW

EAN 4016032256830



**2U fixed shelf for racks from 800 mm depth 88,5x482x552 mm, up to 25 kg, black (RAL 9005)**

The shelves for fixed mounting can be installed easy on the two front 483 mm (19") profile rails of your 483 mm (19") network- or server cabinet. Due to their stable, perforated steel sheet with a high load capacity, they are the optimal surface for components which are not 483 mm (19") suitable.

- Fixed installation
- sturdy, perforated steel sheet
- incl. fixing material
- 2-point fixing (front 19" profile rails)

**Attributes**

- Color: black, RAL 9005
- Load capacity: 25 kg
- Mounting type: Fixed mounting
- Units: 2
- Inch form factor (IEC 60297): 482.6 mm (19")
- Suitable cabinet depth:  $\geq$  800 mm

**Package contents**

- Installation set (screws, cage nuts, washers)

Logistics						
	Number (pcs)	Weight (kg)	Depth (cm)	Width (cm)	Height (cm)	cm <sup>3</sup>
Packaging Unit Carton	5	15.70	59.50	50.00	51.50	153,212.00
Packaging Unit Inside	1	3.14	50.00	59.00	10.00	29,500.00
Packaging Unit Single	1	3.14	50.00	59.00	10.00	29,500.00
Net single without Packaging	0	3.14	54.90	48.20	8.80	23,286,400.00