

# DIGITUS® Cavo patch LWL monomodale, LC/LC

DK-2933-10

EAN 4016032248965



### FO patch cord, duplex, LC to LC SM OS2 09/125 $\mu$ , 10 m

Cavo patch in fibra ottica, duplex, da LC a LC, SM OS2 09/125  $\mu$ , 10 m

**Le migliori prestazioni e qualità della connessione per la vostra rete.**

- Cavo Duplex
- LSOH
- Spina con giunto in ceramica
- Diametro del cavo 2 mm
- Confezionate singolarmente con certificato di collaudo

#### Attributes

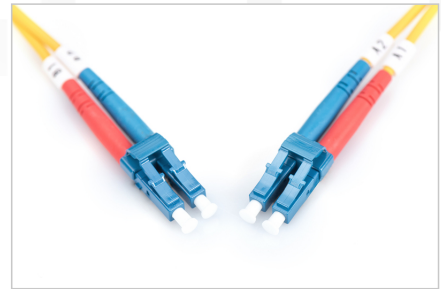
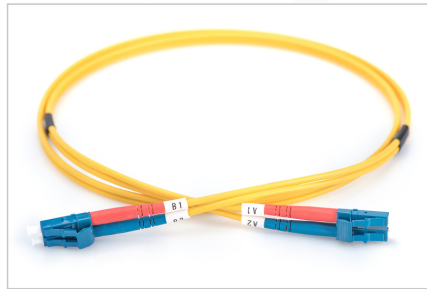
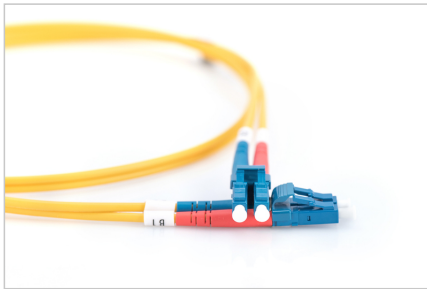
- Assortimento: Cavi patch in fibra ottica

- Classe fibra: OS2
- Colore cavo: giallo
- Connettore 1: LC
- Connettore 2: LC
- Diametro del cavo: 2 mm
- Diametro della fibra: 9/125 $\mu$
- Imballaggio: Busta in plastica DIGITUS
- Modalità: Monomodale
- Protezione: monocolore
- Tipo di cavo: I-VH 2E9/125 $\mu$
- Lunghezza: 10 m

#### Logistics

	Number (pcs)	Weight (kg)	Depth (cm)	Width (cm)	Height (cm)	cm <sup>3</sup>
Packaging Unit Carton	40	7.13	60.00	38.00	32.00	72,960.00
Packaging Unit Inside	5	0.89	18.00	19.50	14.00	4,914.00
Packaging Unit Single	1	0.18	3.00	20.00	30.00	1,800.00
Net single without Packaging	0	0.15	17.00	17.00	3.00	867.00

More images:



Part No.	DK-2933-10			
Lenght	10 m			
Cable Type	Duplex SM 9/125		OS2 LSZH	
	END A		END B	
Connector Type	LC		LC	
Insertion Loss (dB)	0.12	0.15	0.15	0.19
Return Loss (dB)	51.8	53.2	51.1	50.7
Q.C.	PASS			